



**WHITEHORNES**

Buy. Sell. Let. Relax!

0114 268 8533  
info@whitehorses.com  
www.whitehorses.com

70 Muskoka Drive, Bents Green, Sheffield

Guide Price £500,000 - £525,000

## 70 Muskoka Drive, Bents Green

Finished recently to an exceptionally high standard is this super spacious and tastefully extended three bedroom, two bathroom semi-detached family home. Offering a versatile and in many ways a unique layout that will suit a wide range of buyers including both the family or those looking to downsize in equal measures. Located on this extremely well sought after residential road in the very heart of Bents Green one of Sheffield's most sought after suburbs with catchment for both Ecclesall Junior and Silverdale Secondary School. The property has undergone a full downstairs internal transformation and extension, enjoying a contemporary, bespoke high end finish with a beautiful bedroom and full bathroom suite.

Council Tax band: C

Tenure: Leasehold

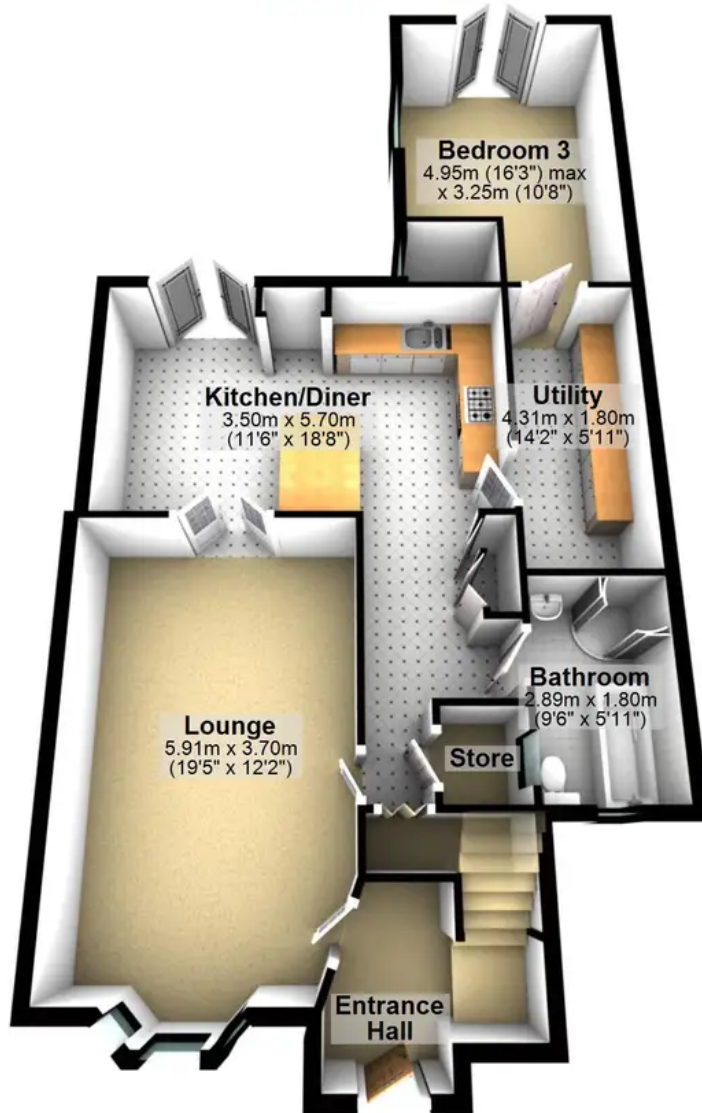
- STUNNING THREE DOUBLE BEDROOMED SEMI DETACHED FAMILY HOME
- INCREDIBLY VERSATILE ACCOMMODATION OVER TWO FLOORS THAT TOTAL AN IMPRESSIVE 1,306 SQ FT
- RECENTLY EXTENDED BY THE CURRENT VENDOR TO CREATE THIS UNIQUE LAYOUT
- FABULOUS REAR PRIVATE FAMILY GARDEN AND AMPLE PARKING TO THE FRONT
- OFSTED RATED EXCELLENT ECCLESALL JUNIORS AND SILVERDALE SECONDARY SCHOOL CATCHMENTS
- HEART OF ULTRA POPULAR BENTS GREEN SUBURB
- PERFECT FOR THE FAMILY OR THOSE LOOKING TO DOWNSIZE
- LEASEHOLD PROPERTY AND COUNCIL TAX BAND C





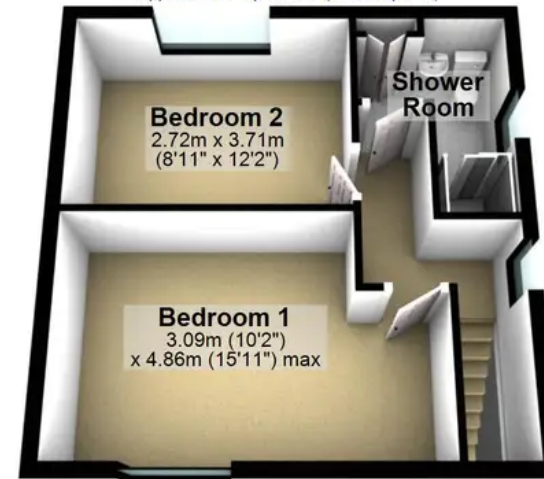
### Ground Floor

Approx. 87.0 sq. metres (936.6 sq. feet)



### First Floor

Approx. 34.4 sq. metres (370.2 sq. feet)



Total area: approx. 121.4 sq. metres (1306.8 sq. feet)

All measurements are approximate  
Plan produced using PlanUp.



**WHITEHORSES**

Buy. Sell. Let. Relax!

0114 268 8533  
info@whitehorses.com  
www.whitehorses.com