



WHITEHORNES

Buy. Sell. Let. Relax!

0114 268 8533
info@whitehornes.com
www.whitehornes.com

14 Chelsea Road, Brincliffe

Sheffield

Guide Price £650,000 - £675,000

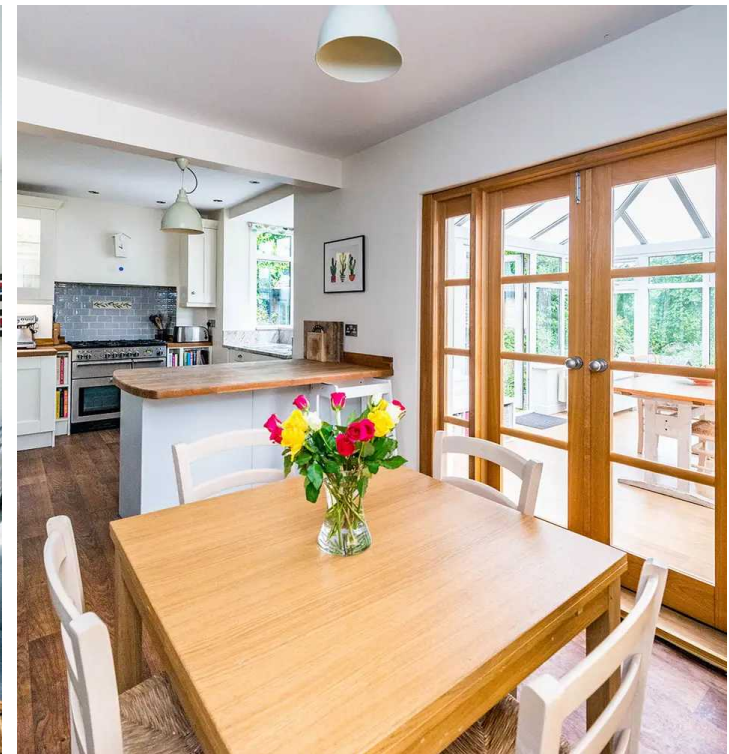
14 Chelsea Road

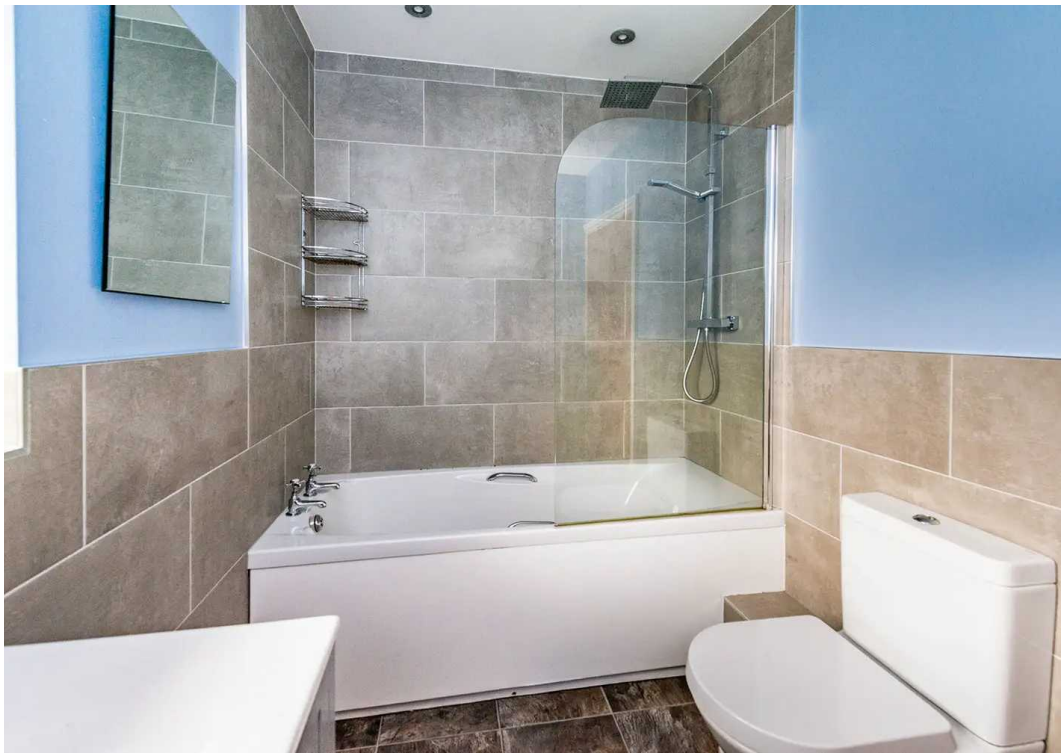
Brincliffe, Sheffield

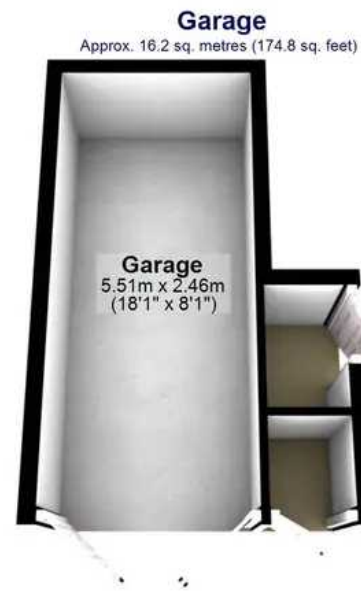
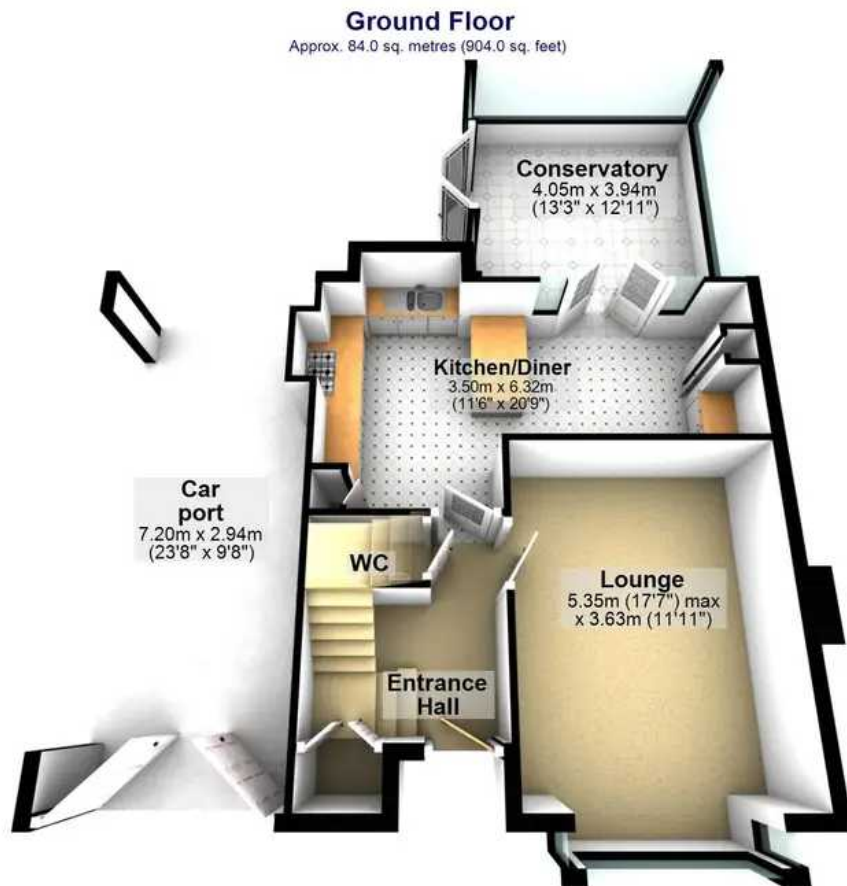
An incredibly rare opportunity has arisen to purchase this absolutely stunning, immaculately presented and very well proportioned four bedroom, two bathroom, detached home. Pitch perfect for the growing family market looking for a forever home the property enjoys two super spacious and light floors of accommodation that total an impressive 1,791 sq feet. Finished internally to a super high standard by the current vendors that offers up a cool and contemporary vibe combined with far reaching views, ample driveway, garage, car port and wonderfully private rear family garden. Having been tastefully and skilfully extended to the side and rear and offering a fabulous open plan kitchen diner it's easy to say that viewing is absolutely essential to fully appreciate this wonderful property. Located on this iconic, tree lined Sheffield Road within the very heart of ultra popular Brincliffe, Chelsea park is few short striders and fashionable Nether Edge and Banner Cross are on the doorstep

Council Tax band: D Tenure: Leasehold

- STUNNING FOUR BEDROOMED TWO BATHROOMED DETACHED FAMILY HOME
- INCREDIBLY RARE OPPORTUNITY TO MARKET WITH VIEWING A PRE REQUISITE
- TWO FABULOUS FLOORS OF ACCOMMODATION TOTALLING AN IMPRESSIVE 1,791 SQ FEET
- PITCH PERFECT FOR THE GROWING FAMILY MARKET LOOKING FOR A FOREVER HOME
- EXCELLENT LOCAL SCHOOL CATCHMENTS INCLUDING MERCIA AND HIGH STORRS SECONDARY
- HEART OF ULTRA POPULAR BRINCLIFFE WITH CHELSEA PARK A SHORT STROLL
- EXCELLENT LOCAL AMENITIES INCLUDING FASHIONABLE NETHER EDGE AND BANNER CROSS







Total area: approx. 166.4 sq. metres (1791.6 sq. feet)

All measurements are approximate
Plan produced using PlanUp.