



WHITEHORSES

Buy. Sell. Let. Relax!

0114 268 8533
info@whitehorses.com
www.whitehorses.com

48 Richmond Road, Handsworth

Sheffield

Guide Price **£190,000**

48 Richmond Road

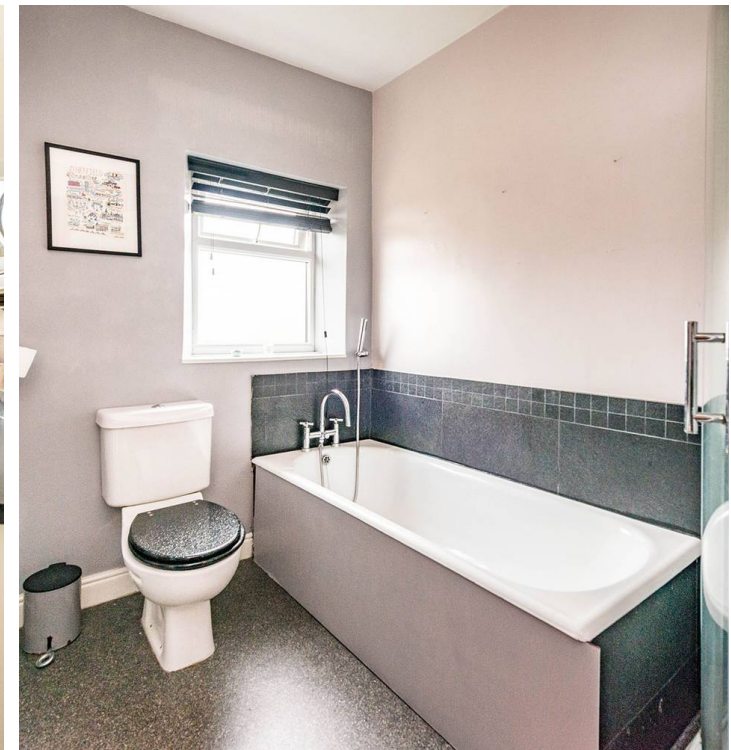
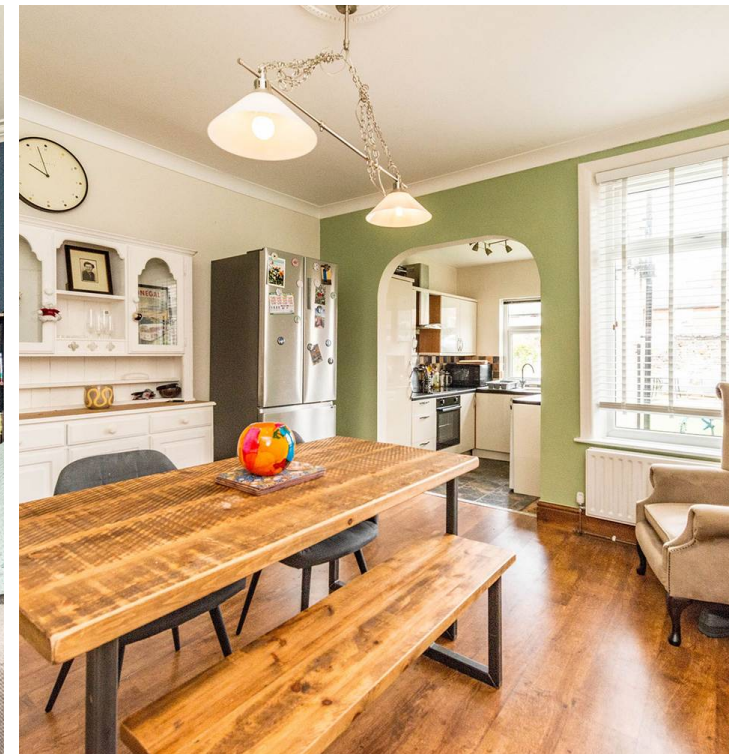
Handsworth, Sheffield

Nestled in the heart of the ultra-popular Handsworth suburb, this three-bedroomed mid-terraced property presents an ideal opportunity for first-time buyers or young families alike. Spread over four floors of bright accommodation, this property offers an impressive 1250 sq. ft. of living space, which briefly consists of a lounge, kitchen, dining room, 3 large bedrooms, family bathroom and a cellar. To the rear is a low maintenance garden with patio area, perfect for young families and to the front is easy on street parking. The location is conveniently close to numerous local amenities and commuting motorway links along with being in local schooling catchments to several OFSTED rated schools. Viewing is essential to see the beautiful finish throughout by the current vendors.

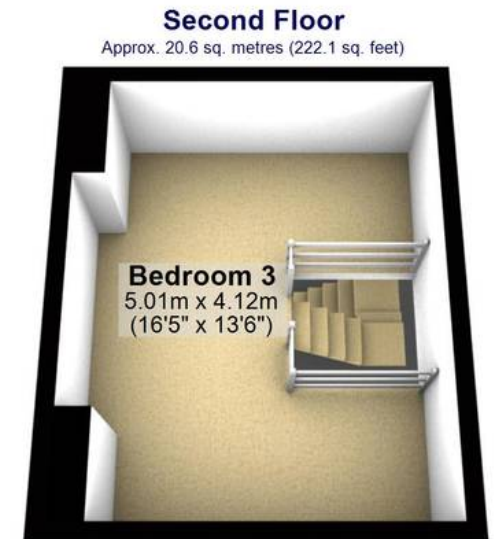
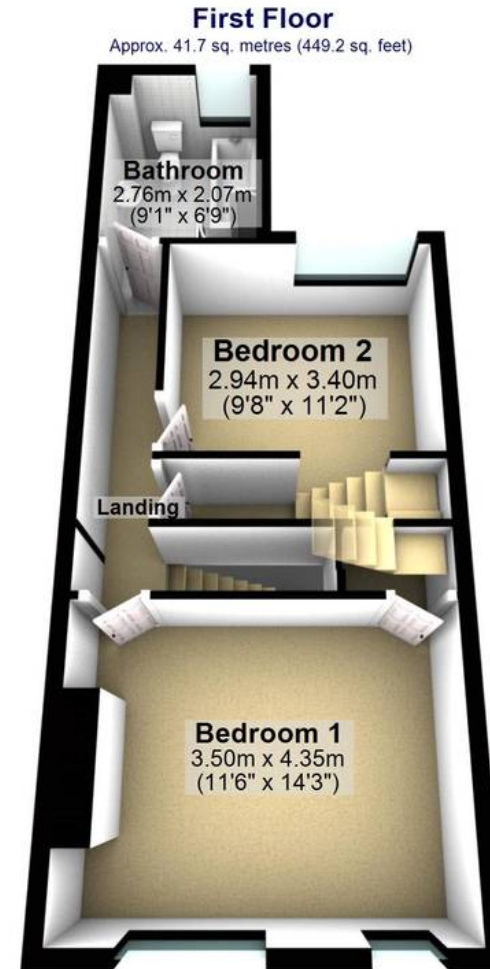
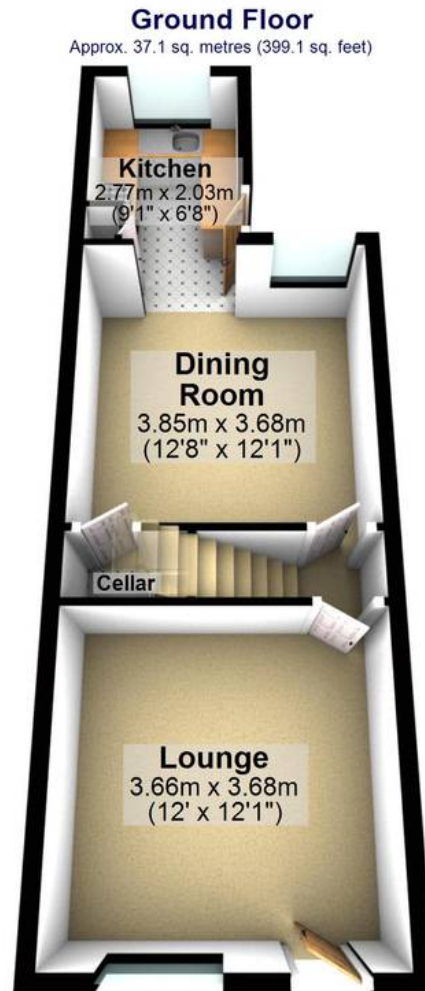
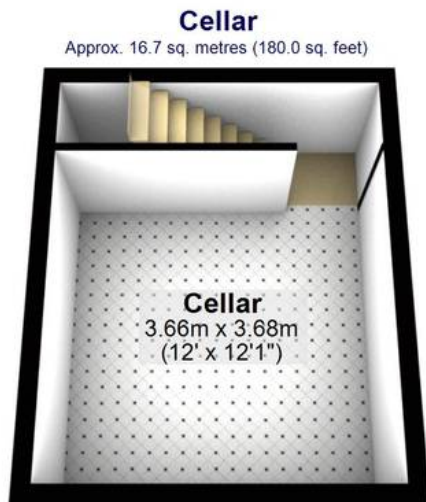
Council Tax band: A

Tenure: Leasehold

- THREE BEDROOMED MID TERRACED PROPERTY
- HEART OF ULTRA POPULAR HANDSWORTH SUBURB
- CLOSE TO NUMEROUS LOCAL AMENITIES AND COMMUTING MOTORWAY LINKS
- REAR LOW MAINTENANCE GARDEN WITH PATIO
- LOCAL SCHOOLING CATCHMENT INCLUDING ASTON ACADEMY AND HANDSWORTH GRAND COMMUNITY COLLEGE
- LEASEHOLD PROPERTY WITH 680 YEARS LEFT AND £3 GROUND RENT PER YEAR
- FINISHED TO A BEAUTIFUL STANDARD BY THE CURRENT VENDORS
- VIEWING ESSENTIAL TO DO FULL JUSTICE
- FOUR FLOORS OF BRIGHT ACCOMMODATION TOTTALLING AN IMPRESSIVE 1250 SQ FT
- PERFECT FOR THE FIRST TIME BUYERS OR YOUNG FAMILY ALIKE







Total area: approx. 116.2 sq. metres (1250.5 sq. feet)

All measurements are approximate
Plan produced using PlanUp.