



WHITEHORNS

Buy. Sell. Let. Relax!

0114 268 8533
info@whitehorns.com
www.whitehorns.com



6 Hutcliffe Wood View, Sheffield

Sheffield

Guide Price £120,000

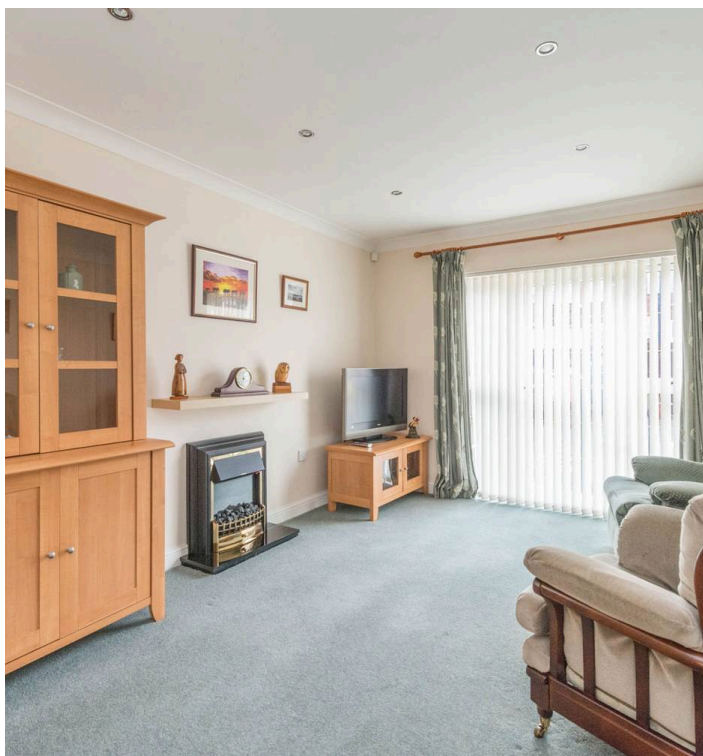
6 Hutcliffe Wood View

Sheffield, Sheffield

GUIDE PRICE £120,000-£125,000 Located in this superb stone built development and accessed via a private secure driveway tucked away from the main road is this superb ground floor retirement apartment. Being of particular interest to those looking to downsize and enjoy living with like minded people the new occupant must be aged 65 years or above to purchase. Apartment six offers a wonderfully light and spacious feel and is finished to a very high standard, with informal parking to the front, communal residents lounge, stunning gardens to the rear, lift access to other floors, electric heating and double glazing along with being in easy access of numerous local amenities at the top of the drive, regular public transport and The Peak District the accommodation in brief comprises secure entrance, open fitted kitchen, living room, bedroom and bathroom. VALUER Andy Robinson
Council Tax band: B

Tenure: Leasehold

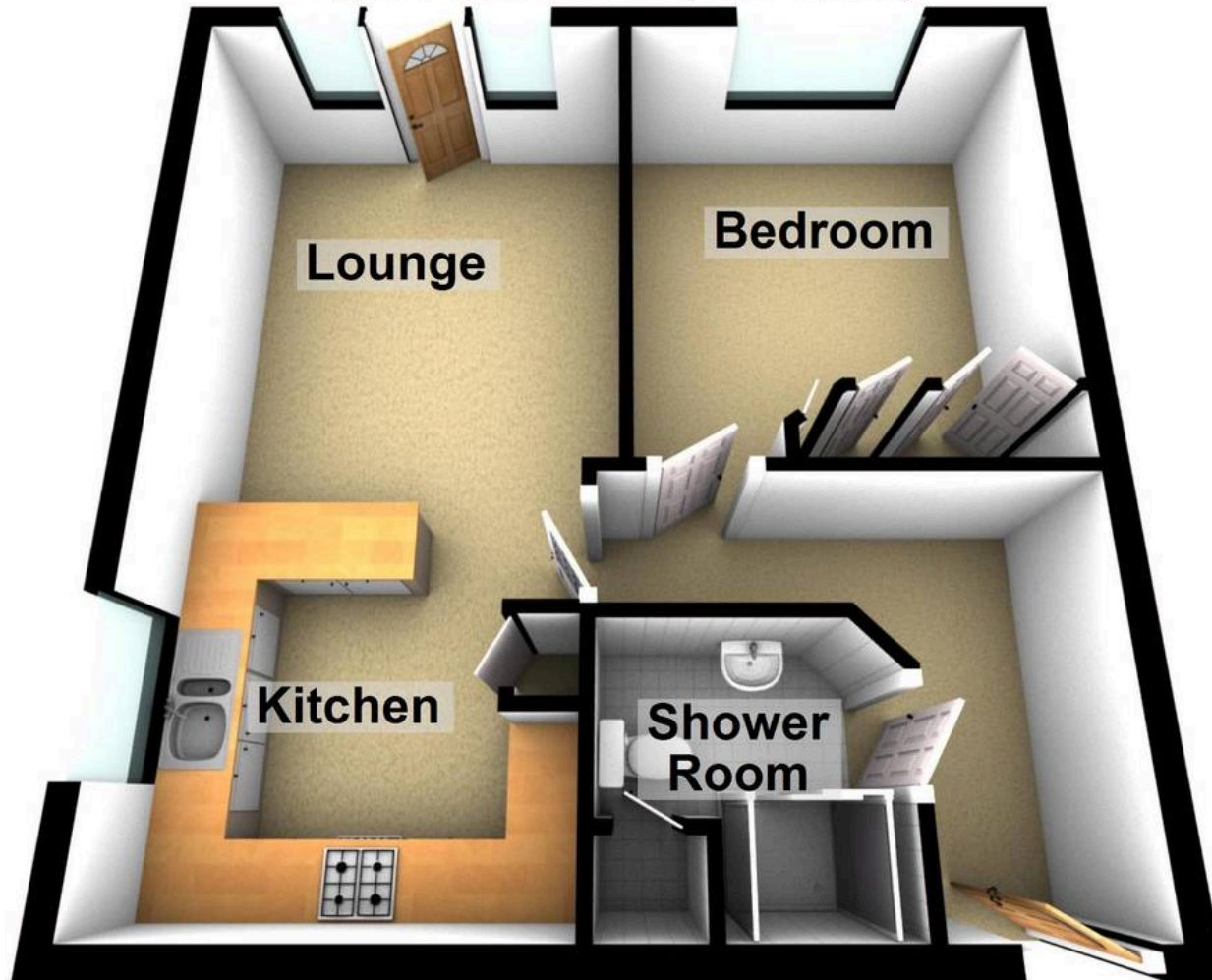
- RETIREMENT APARTMENT FOR THE OVER 65'S
- PRIVATE DRIVEWAY AWAY FROM THE MAIN ROAD
- RESIDENTS LOUNGE
- BEAUTIFUL GARDENS
- FITTED KITCHEN
- EASY OFF ROAD SECURE PARKING RIGHT OUTSIDE
- AVAILABLE WITH NO UPWARD CHAIN INVOLVED
- HEART OF ULTRA POPULAR BEAUCHIEF AND CLOSE TO AMENTIES
- VIEWING ADVISED TO DO FULL JUSTICE
- COUNCIL TAX BAND A LEASEHOLD PROPERTY AND EPC RATING C





Ground Floor

Approx. 43.5 sq. metres (468.5 sq. feet)



Total area: approx. 43.5 sq. metres (468.5 sq. feet)



WHITEHORNES

Buy. Sell. Let. Relax!

0114 268 8533
info@whitehorns.com
www.whitehorns.com