



WHITEHORSES

Buy. Sell. Let. Relax!

0114 268 8533
info@whitehorses.com
www.whitehorses.com

28 Rampton Road, Nether Edge

Sheffield

Guide Price £325,000 - £350,000

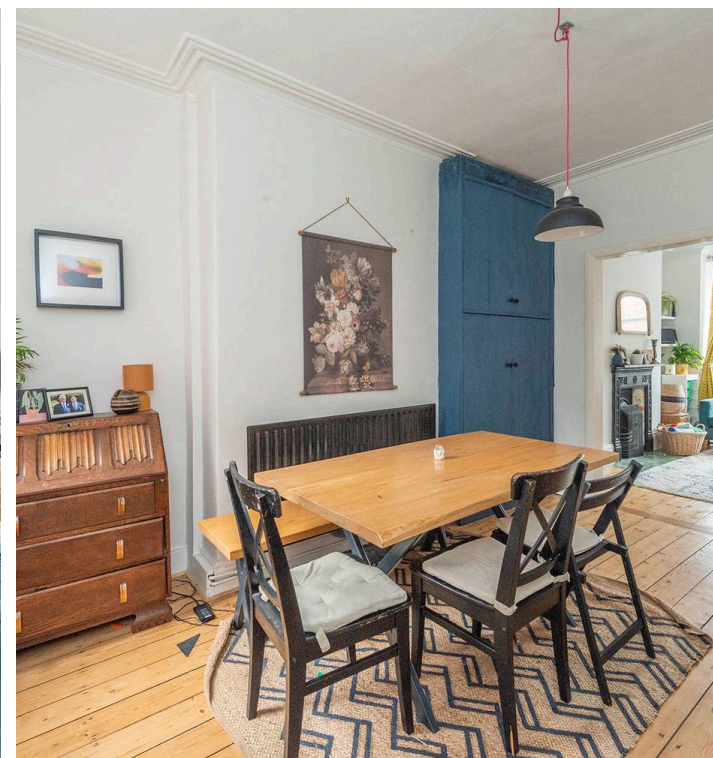
28 Rampton Road

Nether Edge, Sheffield

An exceptional three double bedroomed, bay windowed, double rear off shot period Victorian terraced property. Standing in this elevated position ensuring privacy to the front along with far reaching views this stunning property enjoys a double rear off shot and spacious, light accommodation totaling an impressive 1,157 sq feet carefully arranged over three floors that will appeal to the professional couple and family market alike. Ideally placed in the heart of Nether Edge one of Sheffield's most sought after and desirable residential suburbs within catchment for well sought after schools including Mercia secondary, along with easy access to central Sheffield, The Peak District and the fashionable Abbeydale road and Nether Edge centre. Retaining numerous beautiful period features, character and charm associated with a property from this era and blending them with a contemporary twist this beautiful property must be viewed internally to be fully appreciated.

Council Tax band: B Tenure: Freehold

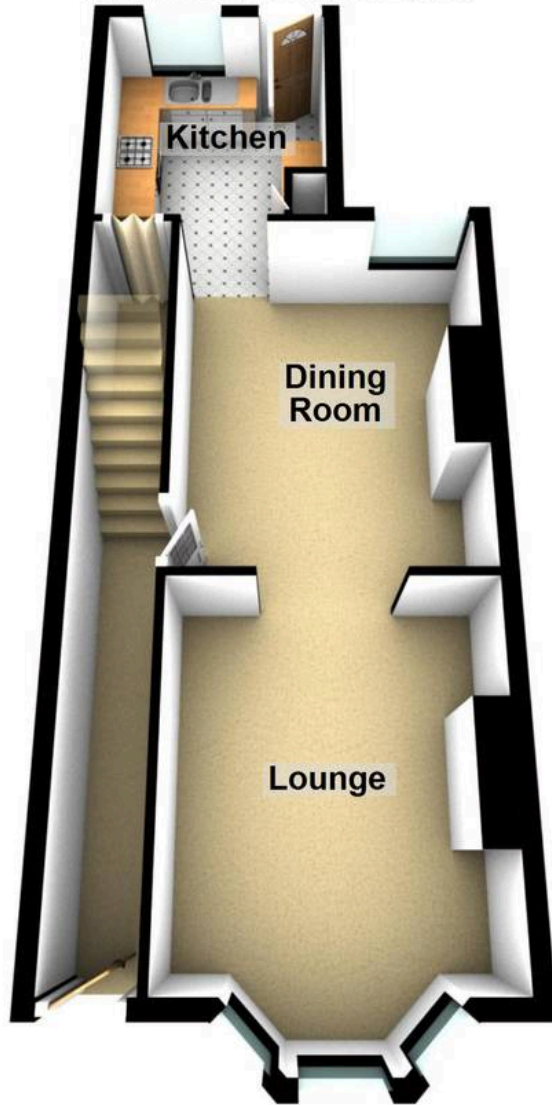
- STUNNING THREE DOUBLE BEDROOMED VICTORIAN VILLA TERRACE
- DOUBLE REAR OFF SHOT PRIVATE REAR GARDEN AND EASY ON PARKING TO THE FRONT
- ELEVATED POSITION ENSURING PRIVACY AND SOME INCREDIBLE VIEWS TO THE FRONT
- 1,157 SQ FEET OF ACCOMMODATION ACROSS THREE IMPRESSIVE FLOORS
- BEAUTIFUL PERIOD FEATURES THROUGHOUT COMBINED WITH A CONTEMPORARY VIBE
- EXCELLENT LOCAL SCHOOL CATCHMENTS INCLUDING MERCIA SECONDARY
- PERFECT FOR THE GROWING FAMILY MARKET OR





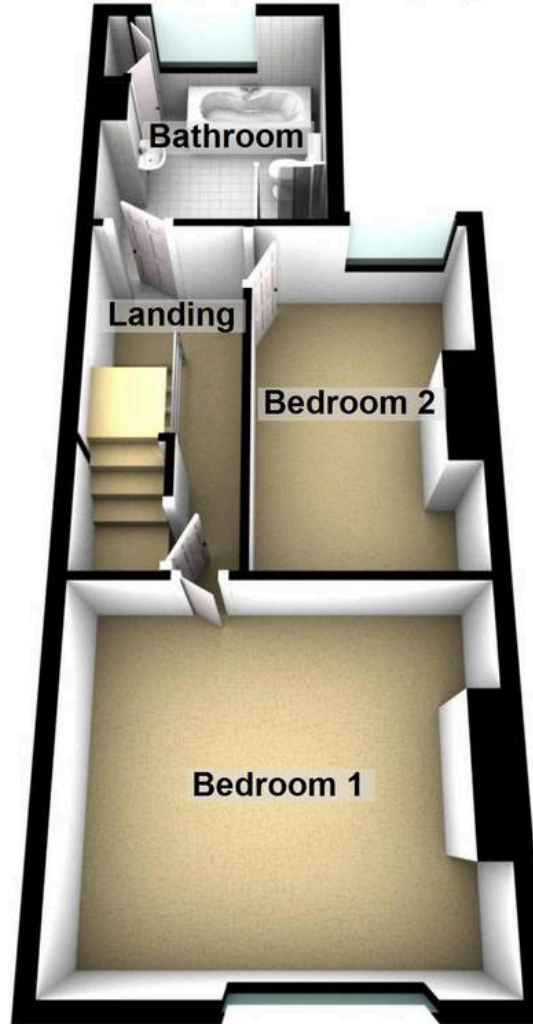
Ground Floor

Approx. 44.7 sq. metres (481.0 sq. feet)



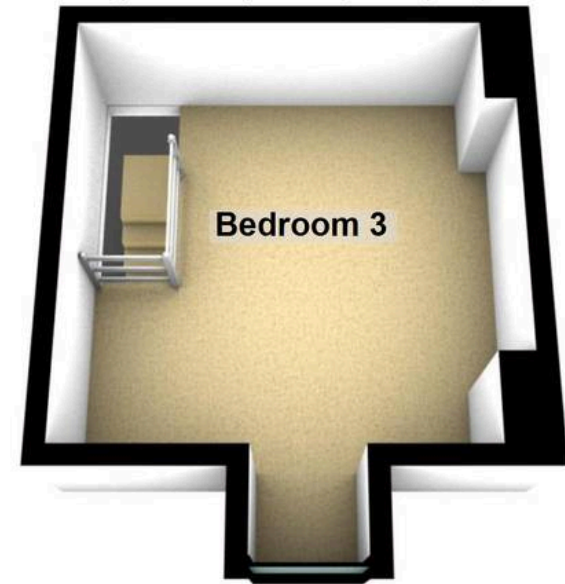
First Floor

Approx. 42.9 sq. metres (461.3 sq. feet)



Second Floor

Approx. 20.0 sq. metres (215.3 sq. feet)



Total area: approx. 107.5 sq. metres (1157.6 sq. feet)