



**WHITEHORNES**

Buy. Sell. Let. Relax!

0114 268 8533  
info@whitehorses.com  
www.whitehorses.com

**10 Riverdale, 343 Fulwood Road**

Sheffield

**Guide Price £250,000 – £260,000**



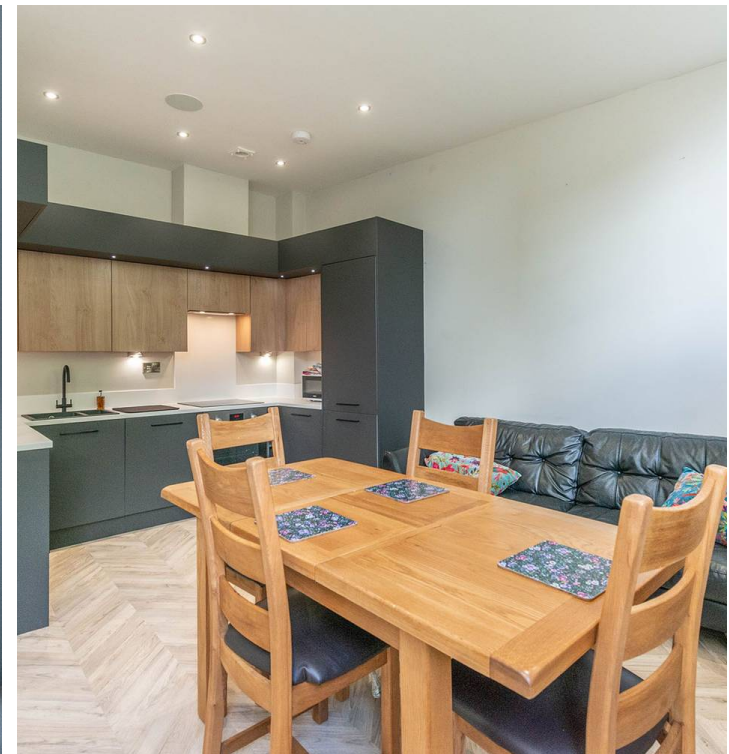
# 10 Riverdale

## Sheffield

An absolutely stunning, immaculately presented and very well proportioned, two double bedroom, stone built, converted ground floor mews apartment. Forming part of this prestigious residential development, and set back quietly from Fulwood Road ensuring a huge degree of privacy the apartment is pitch perfect for the professional couple, those looking to downsize or first time buyers. Enjoying a super light and spacious feel throughout, epitomized by the open plan fitted, kitchen living diner. The property has been developed with a flare for design and offers a private entrance and parking bay directly outside the apartment. Finished in natural stone the property offers a unique internal layout and simply must be viewed to be fully appreciated. Located in the very heart of this ultra popular residential suburb within a stone's throw from a range of independent cafes, eateries and shops in Broomhill. The Royal Hallamshire hospital is within walking distance, as are the two universities and not forgetting the Peak District is on the doorstep. In brief, this wonderful property comprises, private entrance, hallway, two great sized double bedrooms, bathroom and open plan kitchen, living diner. VALUER Andy Robinson

Council Tax band: B Tenure: Leasehold

- SENSATIONAL TWO DOUBLE BEDROOM GROUND FLOOR CONVERTED STONE BUILT MEWS APARTMENT
- SECLUDED SETTING SET AWAY FROM THE ROAD ENSURING PRIVACY
- PRIVATE ENTRANCE AND ALLOCATED PARKING BAY DIRECTLY IN FRONT OF THE APARTMENT
- HEART OF ULTRA POPULAR BROOMHILL ON THE SIUTH WEST OF THE CITY



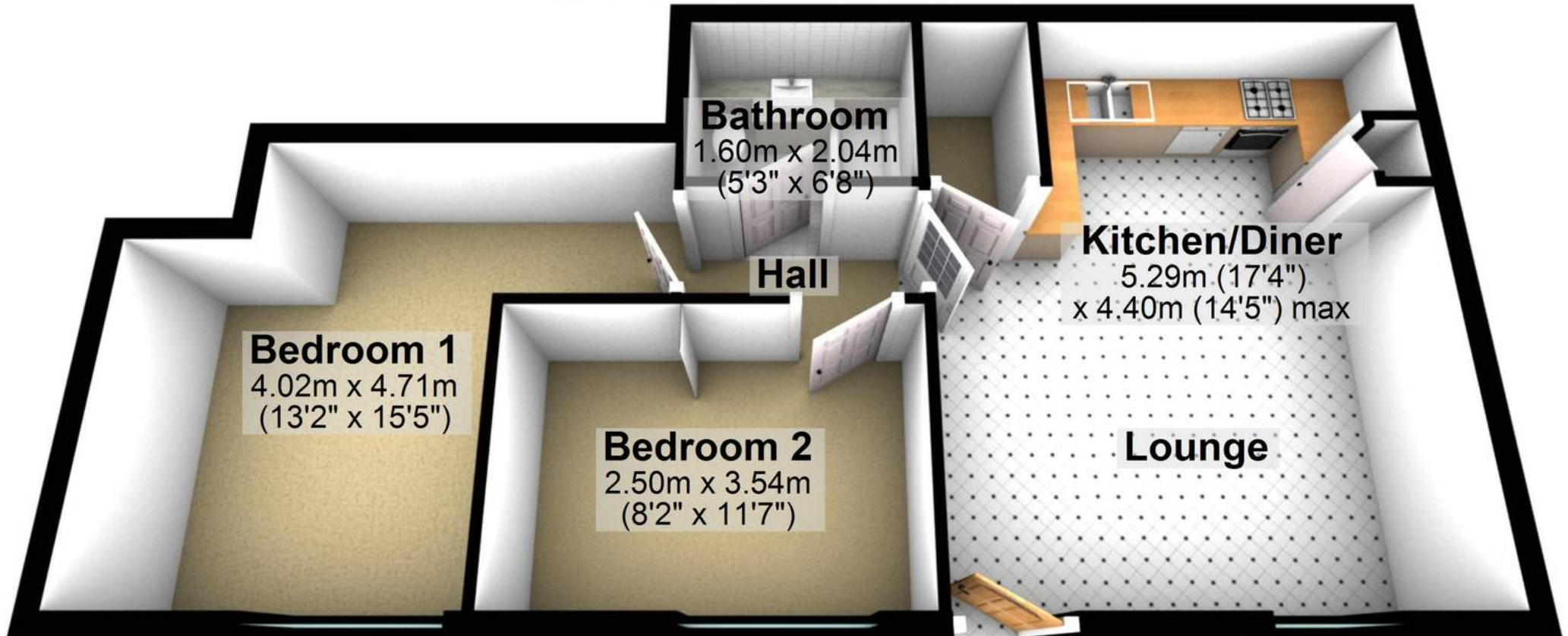






## Ground Floor

Approx. 52.9 sq. metres (569.6 sq. feet)



Total area: approx. 52.9 sq. metres (569.6 sq. feet)

All measurements are approximate  
Plan produced using PlanUp.