

10 Store Street, Bramall Lane
Sheffield

OFFERS AROUND £135,000-£140,000

10 Store Street

Bramall Lane, Sheffield

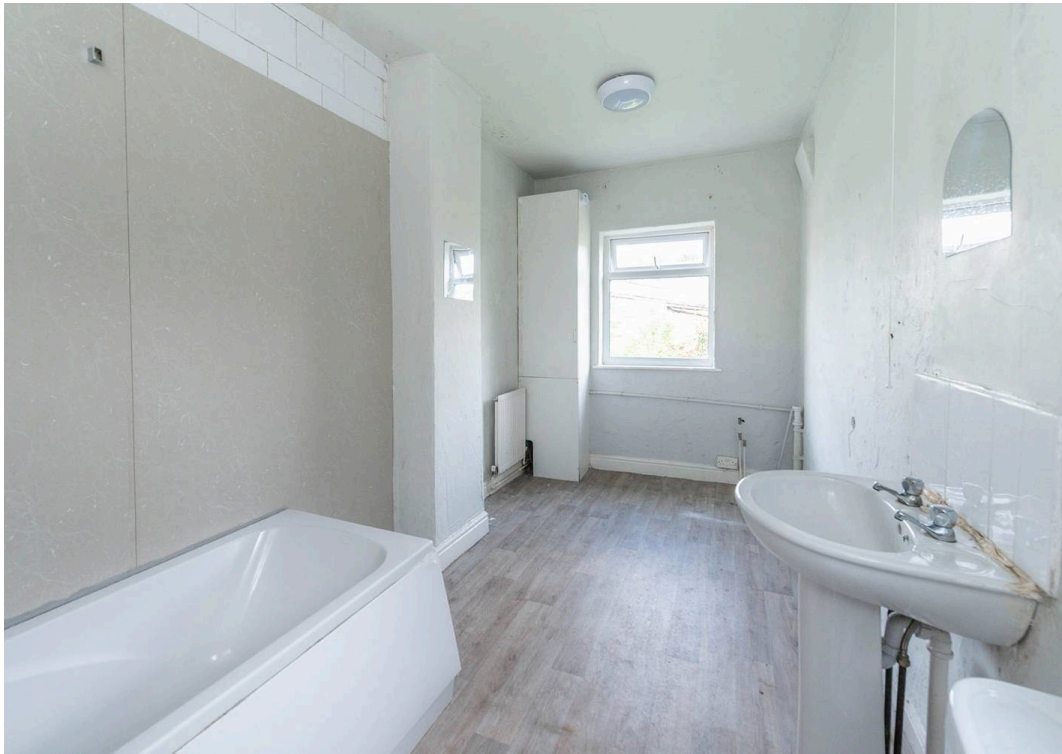
Being Sold via Secure Sale online bidding. Terms & Conditions apply. Starting Bid £135,000 Located in a well-regarded residential suburb, this attractive three-bedroom mid-Victorian terrace presents an enticing opportunity for first-time buyers or astute investors looking for a buy-to-let property. Offered to the market with no upward chain and vacant possession, this property is ideally situated close to a range of amenities and within walking distance to Central Sheffield and universities. Spread across three floors, this home boasts light and spacious accommodation, providing ample living space for modern lifestyles. Situated on a quiet residential road with a permit parking scheme, convenience is at the forefront of this property. Enjoying full plans and planning application to split the property if required in to two apartments, comprising of a one bedroom to the ground floor and a two bedroom to the upper floors. A short stroll away, residents can enjoy numerous local amenities and the train station. In summary, this three-bedroom mid-Victorian terrace on offer represents a compelling opportunity within a sought

Council Tax band: A

Tenure: Leasehold

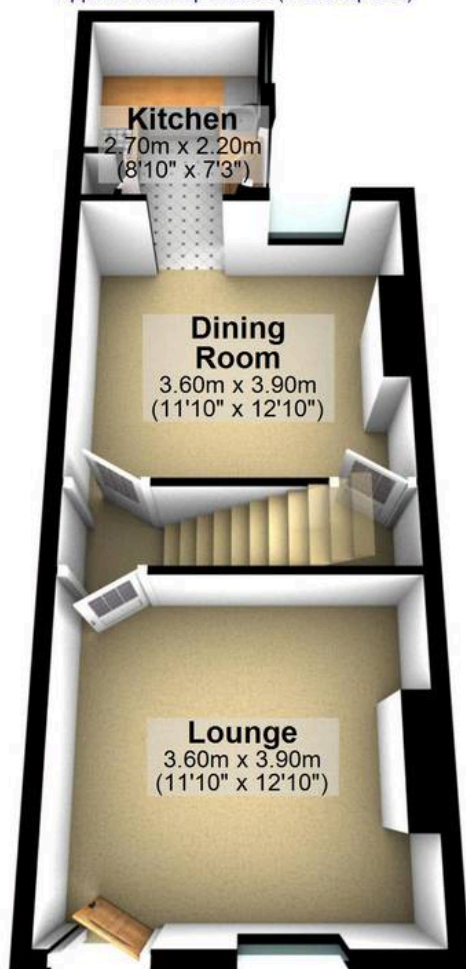
- THREE BEDROOM MID VICTORIAN TERRACE
- PLANS AND PLANNING APPLICATION APPROVED TO CONVERT TO TWO APARTMENTS CONSISTING OF A ONE DOUBLE BEDROOM AND A TWO DOUBLE BEDROOM
- AVAILABLE TO MARKET WITH NO UPWARD CHAIN AND VACANT POSSESSION
- PERFECT FOR A FIRST BUY OF A BUY TO LET INVESTMENT





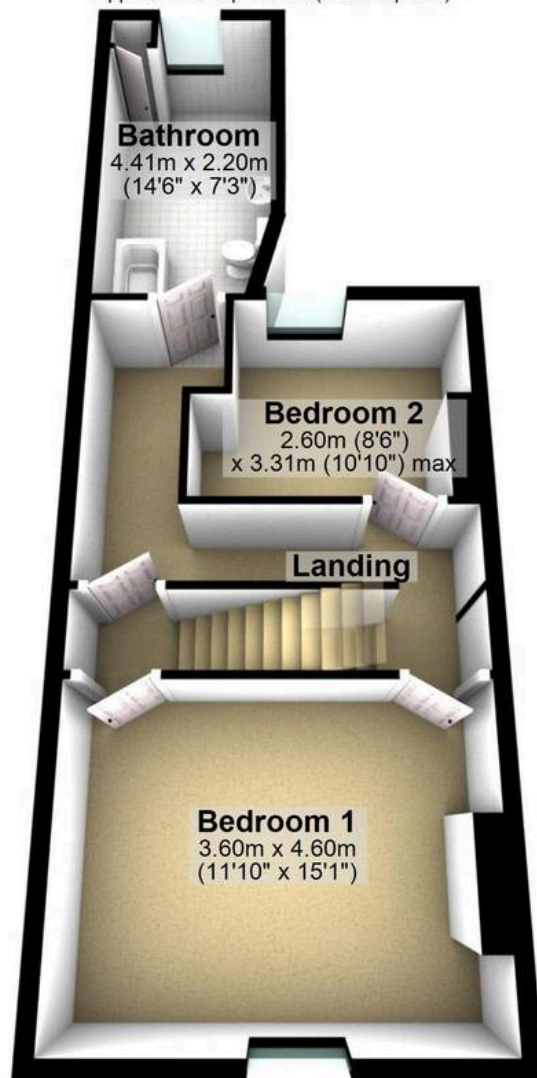
Ground Floor

Approx. 38.3 sq. metres (412.6 sq. feet)



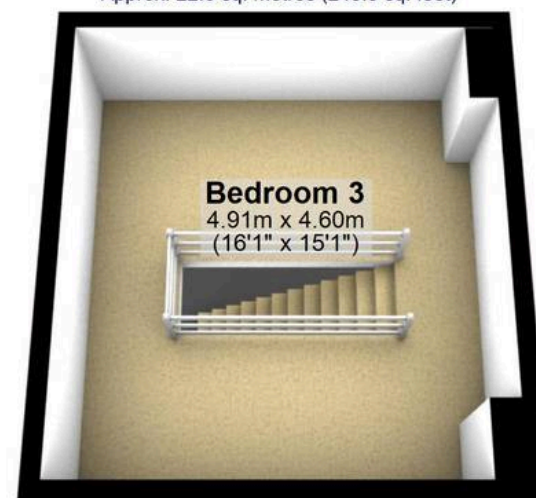
First Floor

Approx. 47.9 sq. metres (515.2 sq. feet)



Second Floor

Approx. 22.6 sq. metres (243.3 sq. feet)



Total area: approx. 108.8 sq. metres (1171.1 sq. feet)

All measurements are approximate
Plan produced using PlanUp.