



**WHITEHORNES**

Buy. Sell. Let. Relax!

0114 268 8533  
info@whitehorses.com  
www.whitehorses.com

**9 Limekilns, North Anston**

Sheffield

In Excess of **£750,000**



## 9 Limekilns

North Anston, Sheffield

Presenting a truly impressive opportunity to own a stunning five-bedroom detached family home, this property is perfectly situated in a semi-rural location, boasting far-reaching views across the picturesque English countryside. This residence is more than just a house; it is a haven for those seeking their forever family home. Elegance and sophistication define the modern and stylish finish that is present throughout the property. No expense has been spared in transforming this house into the epitome of a family sanctuary, where every detail reflects quality and discerning taste. In addition to the exceptional interiors, the location of this home offers unparalleled convenience. Nearby to hospitals in surrounding areas of Rotherham, Bassetlaw and Doncaster perfect for those working in the NHS sector and fantastic reputable schools ensure that education is at the forefront, while superb transport links make commuting a breeze. This property is not just a house; it is an embodiment of the quintessential family lifestyle. This layout provides separate ground floor living accommodations perfect for those with teenagers or older generations. With its idyllic setting amidst the beauty of the English countryside, this home presents an unrivalled opportunity for those seeking a combination of luxury, comfort, and practicality. Council Tax band: E

Tenure: Freehold

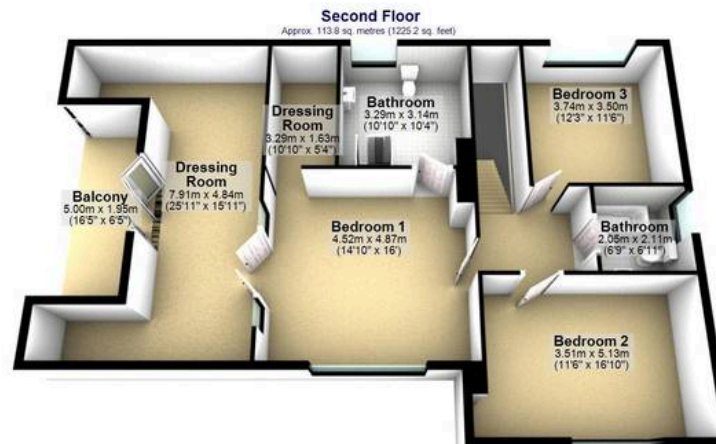
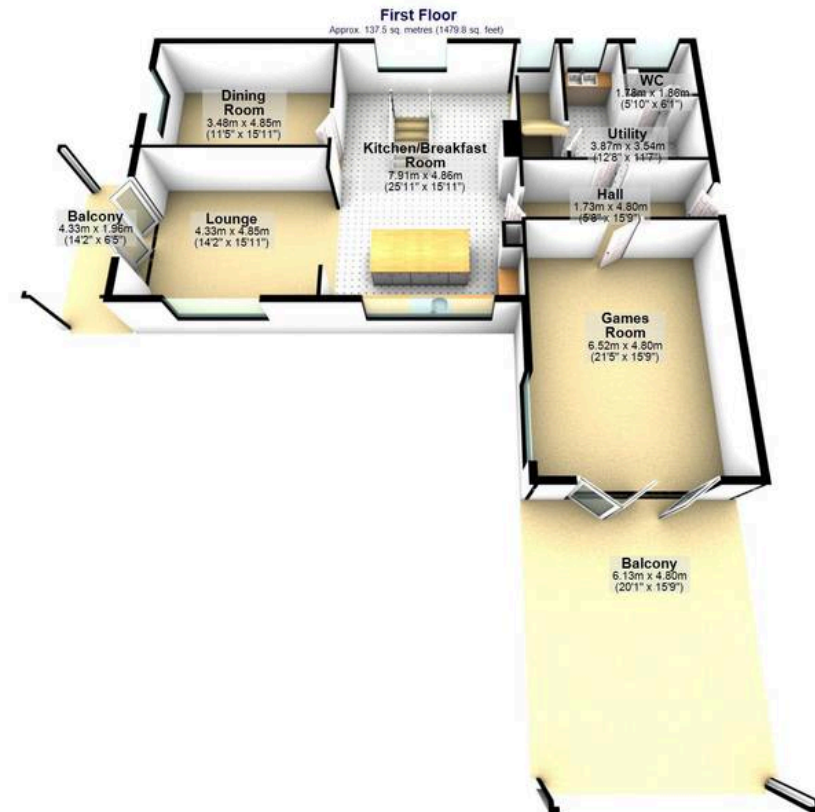
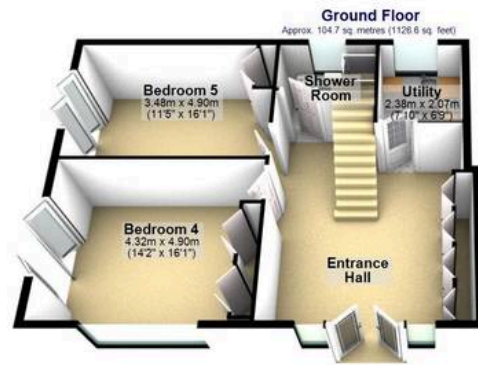
- STUNNING FIVE BEDROOMED DETACHED FAMILY HOME
- SEMI-RURAL LOCATION WITH FAR REACHING VIEWS ACROSS ENGLISH COUNTRYSIDE
- PERFECT FOREVER FAMILY HOME











Total area: approx. 356.0 sq. metres (3831.6 sq. feet)

All measurements are approximate.  
Plan produced using PlanUp.