



WHITEHORNES

Buy. Sell. Let. Relax!

0114 268 8533
info@whitehornes.com
www.whitehornes.com

18 Dorcliffe Lodge, Endcliffe Grove Avenue

Sheffield

Offers in Region of £215,000

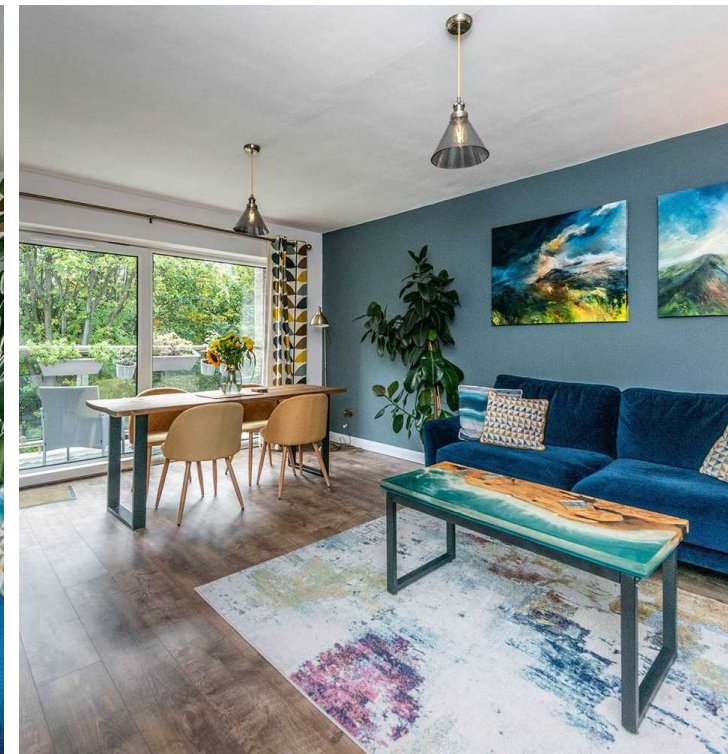
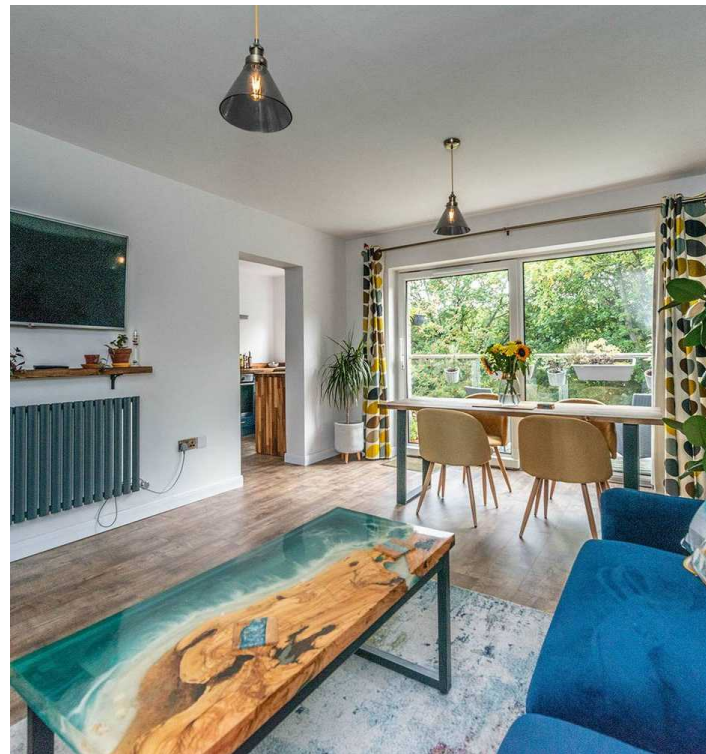
18 Dorcliffe Lodge

Endcliffe Grove Avenue, Sheffield

An absolutely stunning, immaculately presented and very well proportioned two double bedroom apartment. Recently finished to an exceptionally high standard by the current vendors with absolutely no expense spared to create this contemporary vibe throughout including rewire, newly fitted electric radiators, hot water system, kitchen and bathroom. Enjoying some truly impressive views to the rear that are best enjoyed from the private balcony accessed from the lovely sitting room, the apartment comes with full use of the communal gardens and has off road parking with the opportunity to rent a garage space if required. With a super light and spacious feel, the property is pitch perfect for the professional couple, first buy or those looking to downsize and it goes without saying that viewing is absolutely essential to fully appreciate the style and finish on offer by this gorgeous apartment. Located on this quiet iconic residential road within the very heart of ultra popular Endcliffe, within a short stroll to

Council Tax band: B Tenure: Leasehold

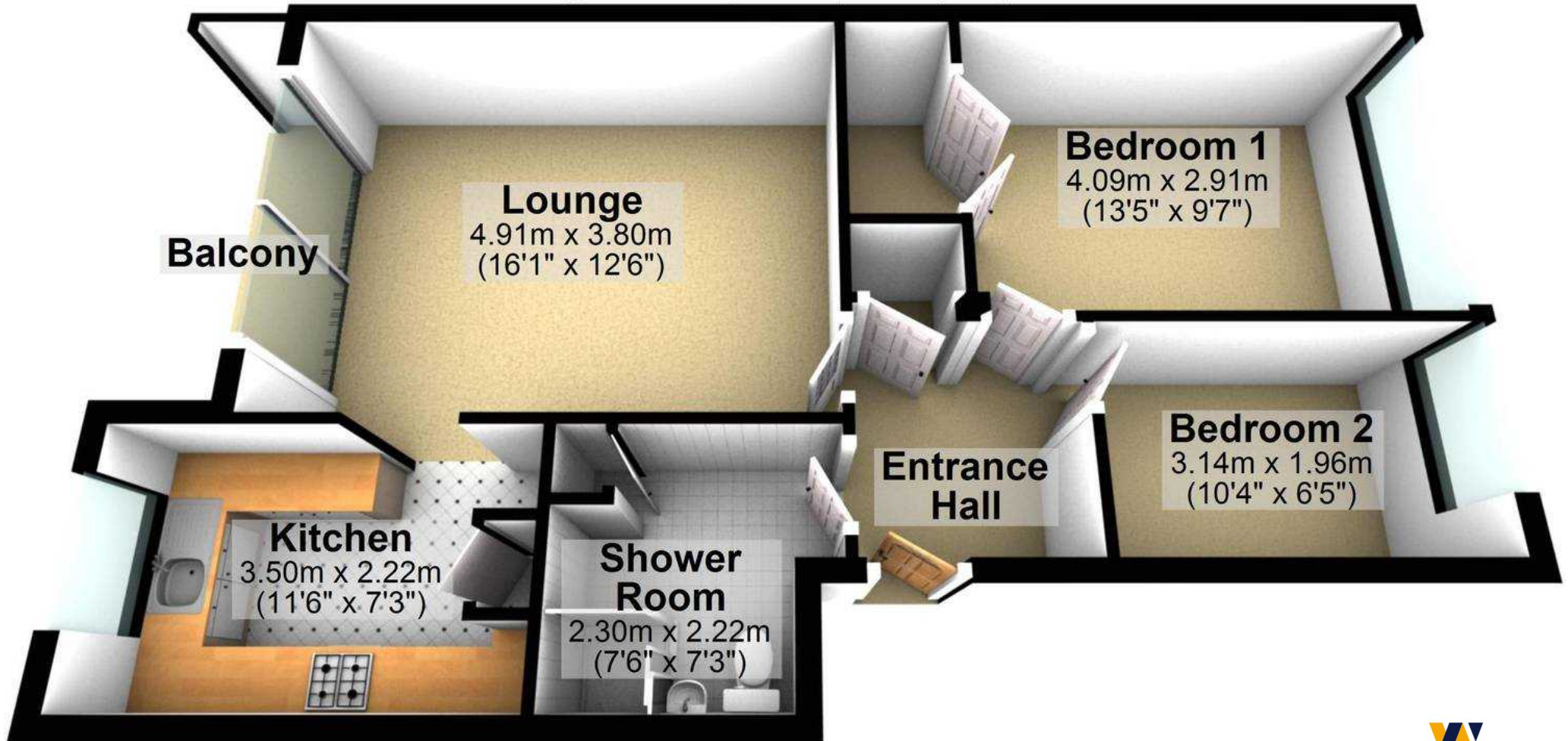
- STUNNING TWO DOUBE BEDROOM APARTMENT
- RECENTLY FINISHED TO INCREDIBLY HIGH STANDARD THROUGHOUT BY THE CURRENT VENDORS WITH NO EXPENSE SPARED
- INCREDIBLE VIEWS OVER TOWARDS BINGHAM PARK AND BEYOND
- PRIVAE BALCONY PARKING AND USE OF COMMUNAL GROUNDS
- ICONIC RESIDENTIAL ROAD





Top Floor

Approx. 57.9 sq. metres (622.8 sq. feet)



Total area: approx. 57.9 sq. metres (622.8 sq. feet)

All measurements are approximate
Plan produced using PlanUp.