



WHITEHORNES

Buy. Sell. Let. Relax!

0114 268 8533
info@whitehorns.com
www.whitehorns.com

21 Tom Lane, Fulwood

Sheffield

OFFERS IN THE REGION OF £475,000

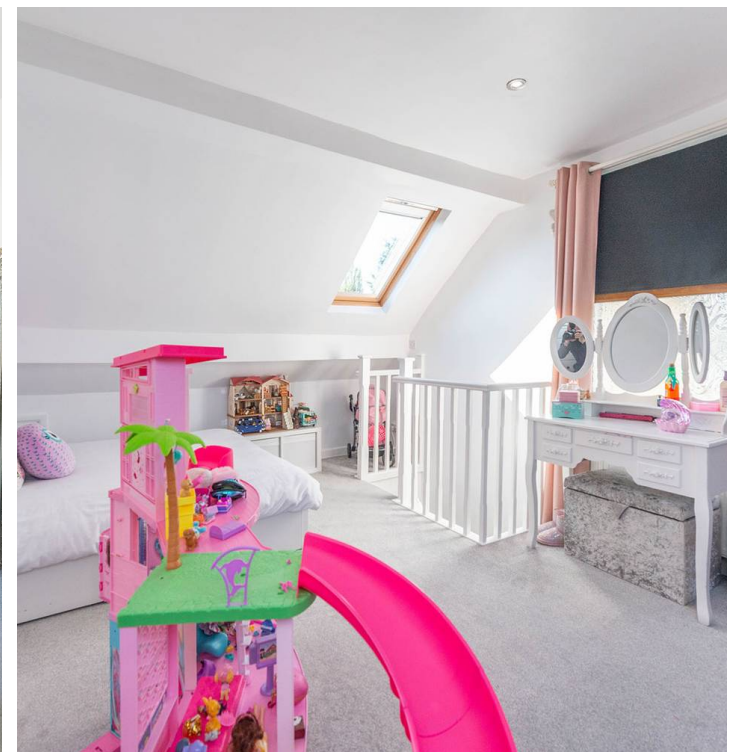
21 Tom Lane

Fulwood, Sheffield

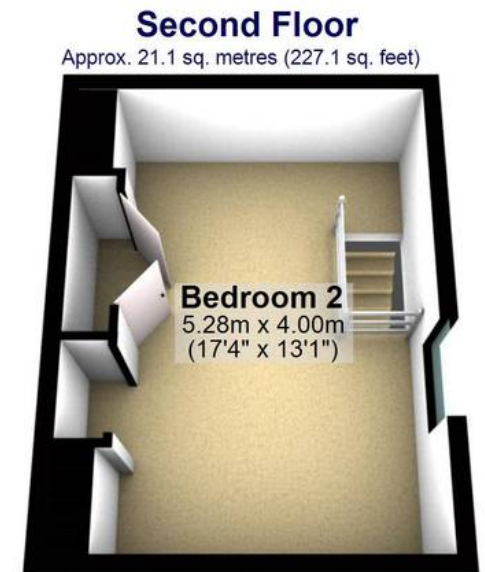
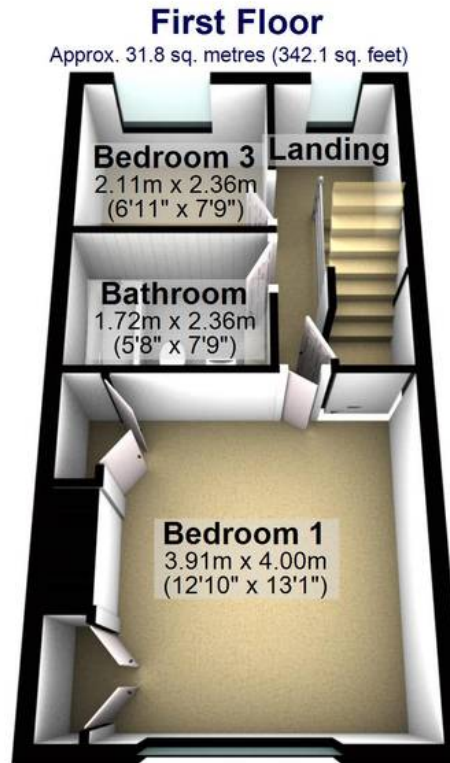
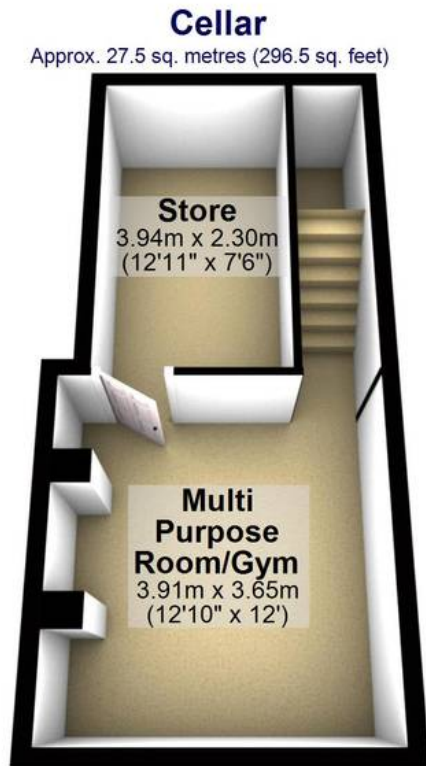
Redefining the term contemporary modern family living is quite exceptional, three bedroom, bay windowed, semi detached home. Having been completely refurbished and modernised to the very highest of standards by the current vendors with absolutely no expense spared to create this breathtaking finish. Enjoying a rear ground floor extension that sets the style with a fabulous open plan fitted kitchen/diner that oozes a touch of class thus stunning home serves up four spacious and light floors of accommodation that total an impressive 1,293 sq feet. With easy on road parking to the front and a private rear sunny landscaped garden it's easy to say that viewing is absolutely essential to fully appreciate the style and calibre on offer by this beautiful home. Located on this iconic residential road within the very heart of ultra popular Fulwood this property will sure to be of interest to the professional couple and family in equal measures.

Council Tax band: C Tenure: Leasehold

- SENSATIONAL THREE BEDROOM BAY WINDOWED VICTORIAN SEM DETACHED
- FULLY REFURBISHED TO AN EXCEPTIONALLY HIGH STANDARD WITH NO EXPENSE SPARED BY THE CURRENT VENDORS
- FOUR FLOORS OF ACCOMMODATION TOTALLING AN IMPRESSIVE 1,293 SQ FT
- ICONIC QUIET RESIDENTIAL ROAD IN THE VERY HEART OF ULTRA POPULAR FULWOOD
- EXCELLENT SCHOOLING CATCHMENTS INCLUDING NETHER GREEN JUNIOR AND HIGH STORRS/TAPTON SECONDARY
- REDEFINING THE TERM CONTEMPORARY MODERN FAMILY LIVING







Total area: approx. 120.1 sq. metres (1293.1 sq. feet)

All measurements are approximate
Plan produced using PlanUp.