



**WHITEHORNES**

Buy. Sell. Let. Relax!

0114 268 8533  
info@whitehorses.com  
www.whitehorses.com



**66 Houghton Road, Woodseats**

Sheffield

**Guide Price £215,000-£225,000**



# 66 Houghton Road

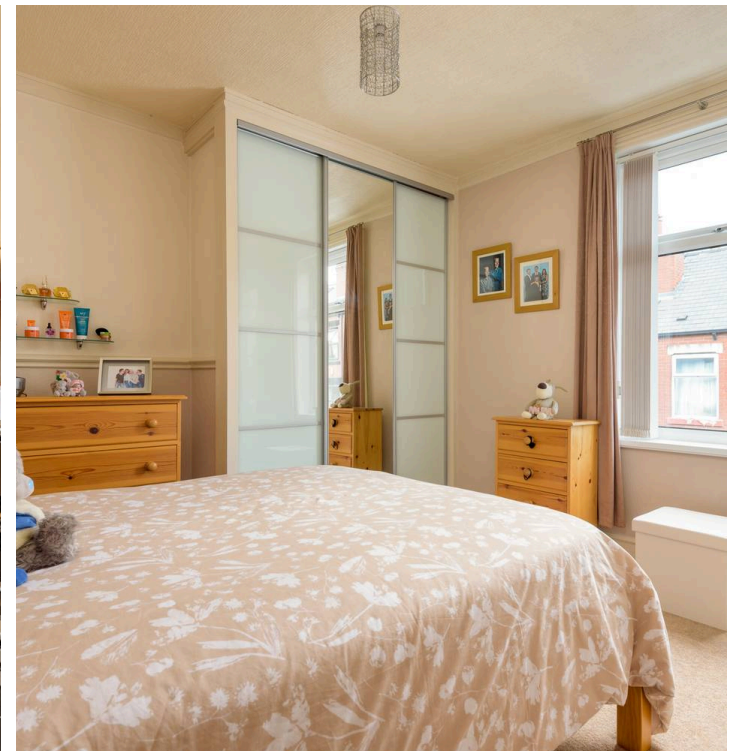
Woodseats, Sheffield

Only upon a detailed internal inspection will the true size and style of this impressive three bedroomed Victorian terraced be fully revealed. Having been meticulously well designed and finished to exacting standards by the current vendors to the very highest level with absolutely no expense spared to create this fabulous finish. With incredibly spacious accommodation that total 1,116 sq feet across three floors.

Council Tax band: B

EPC RATING C

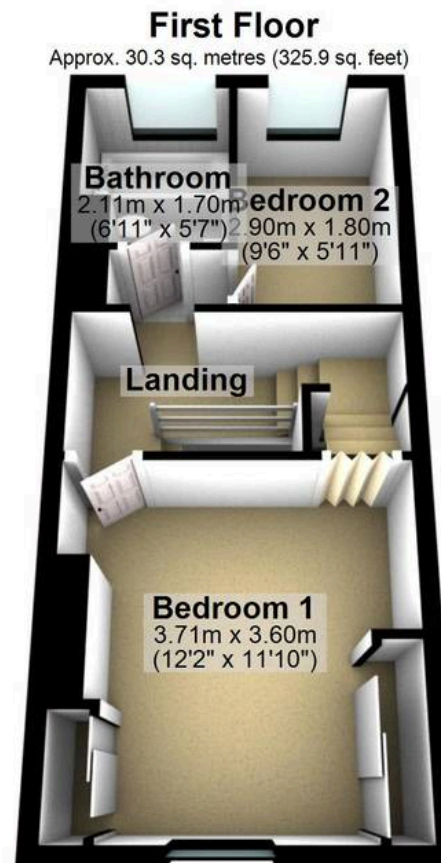
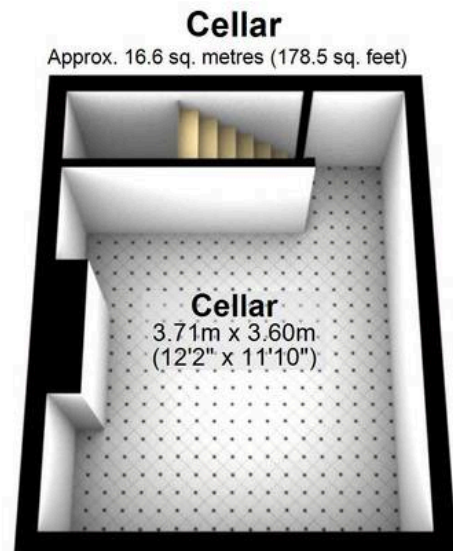
- GRAVES PARK ON THE DOOR STEP
- STUNNING THREE BEDROOMED VICTORIAN TERRACED
- THREE SPACIOUS FLOORS OF ACCOMMODATION TOTALLING 1,116 SQ FEET
- SUPERB REAR PRIVATE LANDSCAPED SOUTHERLY FACING GARDEN
- FINISHED TO AN INCREDIBLY HIGH STANDARD BY THE CURRENT VENDORS
- PERFECT FOR THE FIRST TIME BUYER YOUNG FAMILY OR PROFESSIONAL COUPLE
- INCREDIBLY POPULAR RESIDENTIAL SUBURB OF WOOSEATS
- VIEWING ESSENTIAL TO SEE THE SIZE AND STYLE ON OFFER
- LEASEHOLD 685 YEARS LEFT TO REAMIN COUNCIL TAX BAND A £1,369.21PA
- FABULOUS VIEWS TO THE REAR











Total area: approx. 103.7 sq. metres (1116.2 sq. feet)

All measurements are approximate  
Plan produced using PlanUp.

  
**WHITEHORNES**  
Buy. Sell. Let. Relax!

0114 268 8533  
info@whitehornes.com  
www.whitehornes.com