



WHITEHORNS

Buy. Sell. Let. Relax!

0114 268 8533
info@whitehorns.com
www.whitehorns.com

WHITEHORNS
FOR SALE
0114 268 8533

23 Park Head Crescent, Park Head

Sheffield

Guide Price £395,000 - £410,000

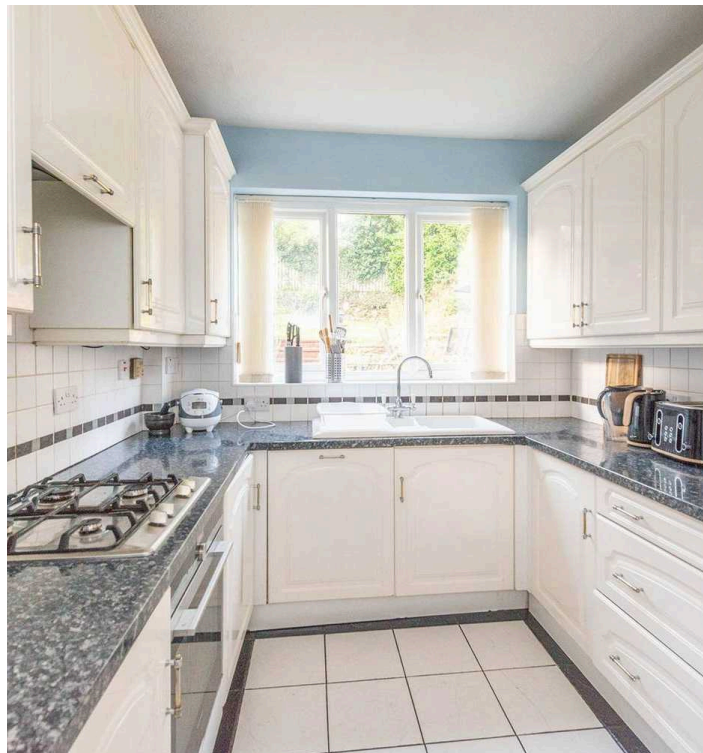
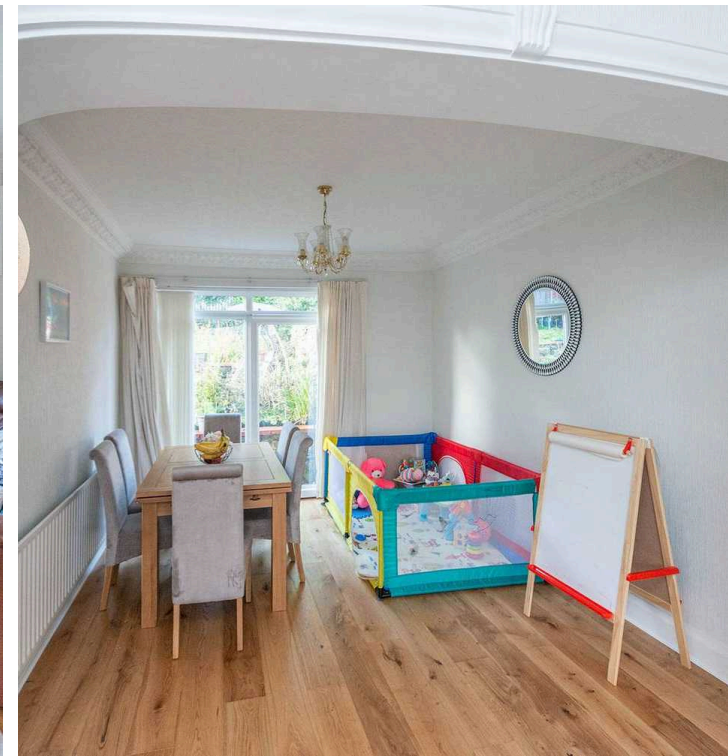
23 Park Head Crescent

Park Head, Sheffield

An excellent three bedroom, bay windowed semi detached family home. With vast as yet untapped potential to extend to the side, rear and loft as neighbouring properties have done so (subject to planning) to create a forever home. With spacious and light floors of accommodation along with a front driveway, car port and larger than expected rear private sunny garden. Perfect for the growing family market looking to find the forever home it's easy to say that viewing is essential to do full justice. Quietly tucked away on this horse shoe road within the very heart of ultra popular Park Head on the south west of the city, the property lies within a short stroll of Ecclesall woods, excellent local amenities are close and it's also worth remembering The Peak District is literally up the road. Finished internally to a lovely standard number twenty three falls within catchment for some of the city's top performing schools including Dobcroft Junior and Silverdale secondary.

Council Tax band: C Tenure: Leasehold

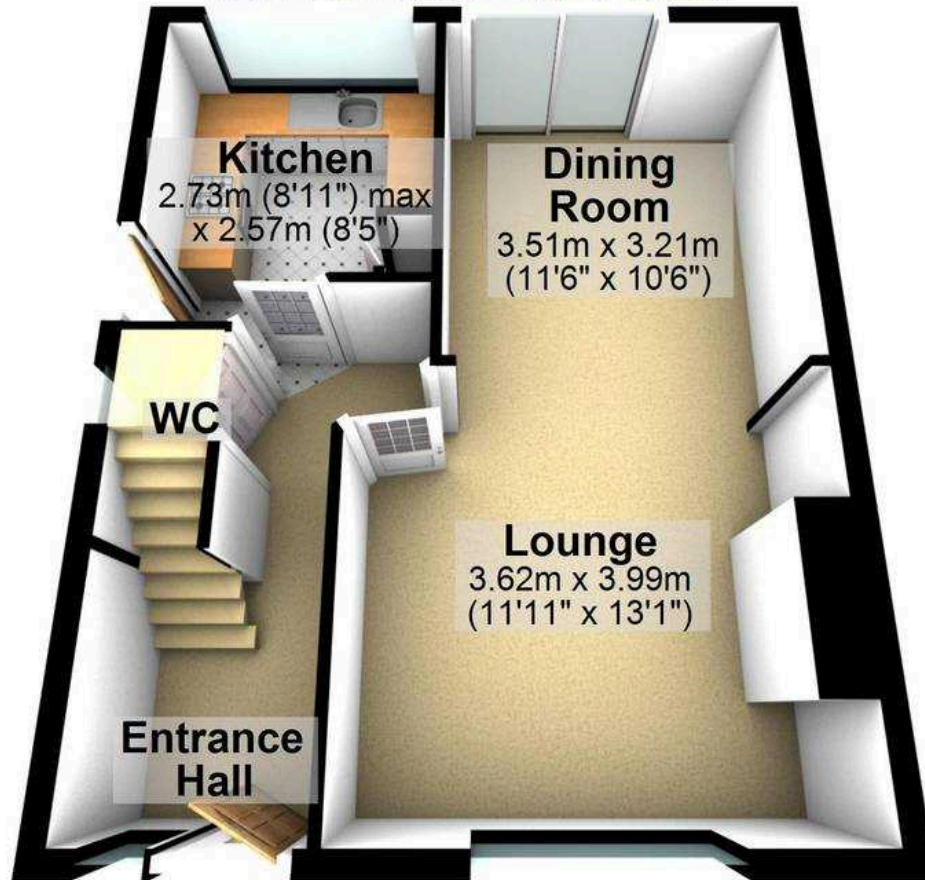
- FABULOUS THREE BEDROOM SEMI DETACHED FAMILY HOME
- QUIET RESIDENTIAL ROAD IN THE VERY HEART OF ULTRA POPULAR PARK HEAD
- HUGE OPPORTUNITY TO EXTEND AS NEIGHBOURING PROPERTIES HAVE DONE SO SUBJECT TO PLANNING TO CREATE A FOREVER HOME
- PERFECT FOR THE GROWING FAMILY MARKET WITH VIEWING ESSENTIAL
- EXCELLENT SCHOOLING CATCHMENTS





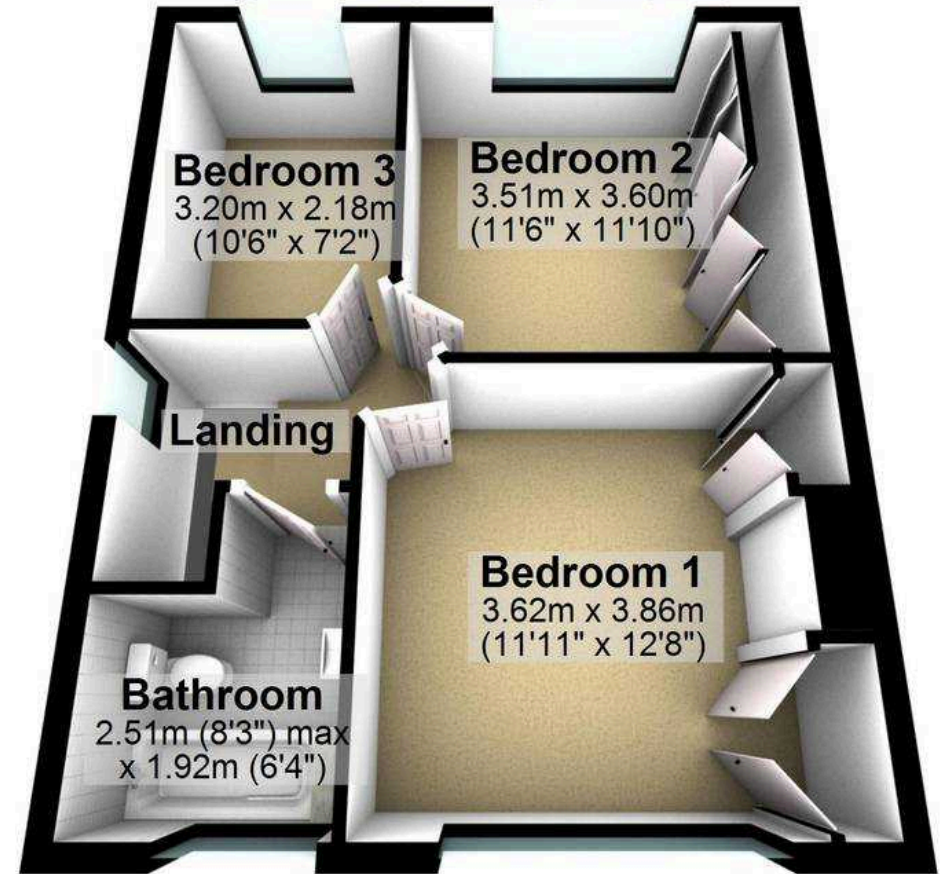
Ground Floor

Approx. 42.5 sq. metres (457.9 sq. feet)



First Floor

Approx. 42.5 sq. metres (457.9 sq. feet)



Total area: approx. 85.1 sq. metres (915.8 sq. feet)

All measurements are approximate
Plan produced using PlanUp.