



WHITEHORNS
Buy. Sell. Let. Relax!
0114 268 8533
info@whitehorns.com
www.whitehorns.com



21 Abbeydale Park Rise, Dore

Sheffield

Guide Price £600,000 - £625,000

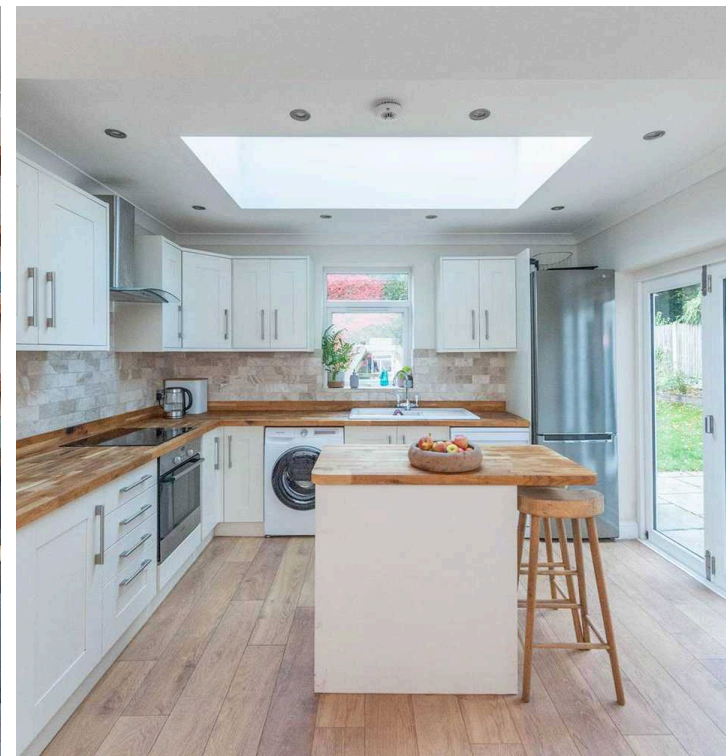
21 Abbeydale Park Rise

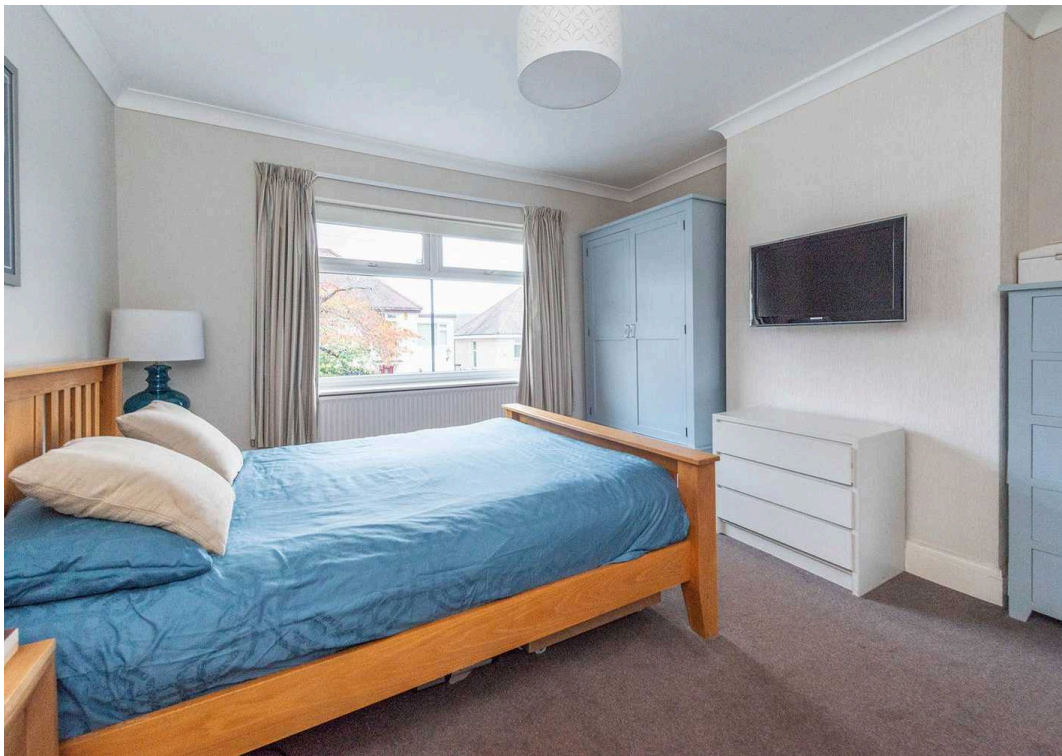
Dore, Sheffield

An absolutely fabulous four double bedroom, double fronted, semi-detached family home. Having been tastefully extended to the rear and side to create this super spacious feel across two floors that total an impressive 1,645 sq feet. Framed by a wonderful rear open plan living/dining/kitchen that gives direct access to the rear via three sets of bi-fold doors. With an incredible rear private larger than anticipated private sunny garden, ample driveway to the front and some far reaching views to the rear over the moors best enjoyed from the first floor. Offering two luxury bathrooms with en-suite to the principal bedroom this gorgeous home will be of particular interest to the growing family market and simply must be viewed internally to be fully appreciated. Located on this iconic tree lined residential road within the very heart of ultra popular Sheffield seventeen, close to numerous local amenities within Dore village and Abbeydale Road south.

Council Tax band: E Tenure: Leasehold

- SUBSTANTIAL FOUR DOUBLE BEDROOM DOUBLE FRONTED SEMI DETACHED HOME
- TASTEFULLY EXTENDED TO THE SIDE AND REAR
- LARGE REAR OPEN PLAN KITCHEN LIVING DINER WITH DIRECT GARDEN ACCESS
- PRIVATE SIZEABLE SUNNY FAMILY GARDEN AND AMPLE FRONT DRIVEWAY
- EXCELLENT SCHOOLING CATCHMENTS INCLUDING DORE JUNIOR AND KING ECBERT SECONDARY
- TWO LUXURY BATHROOMS WITH EN-SUITE





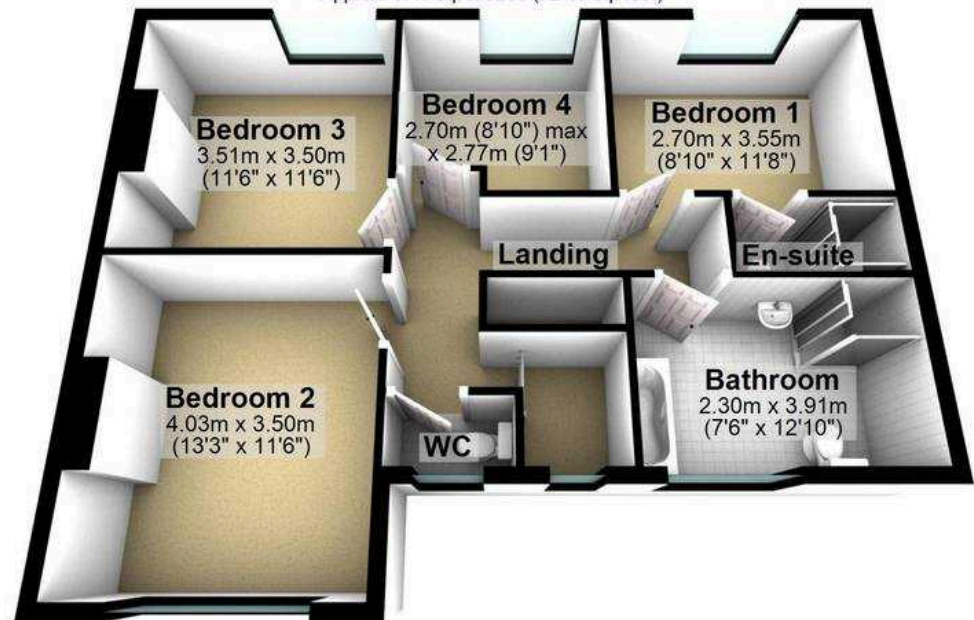
Ground Floor

Approx. 83.3 sq. metres (896.9 sq. feet)



First Floor

Approx. 67.3 sq. metres (724.8 sq. feet)



Total area: approx. 150.7 sq. metres (1621.7 sq. feet)

All measurements are approximate
Plan produced using PlanUp.