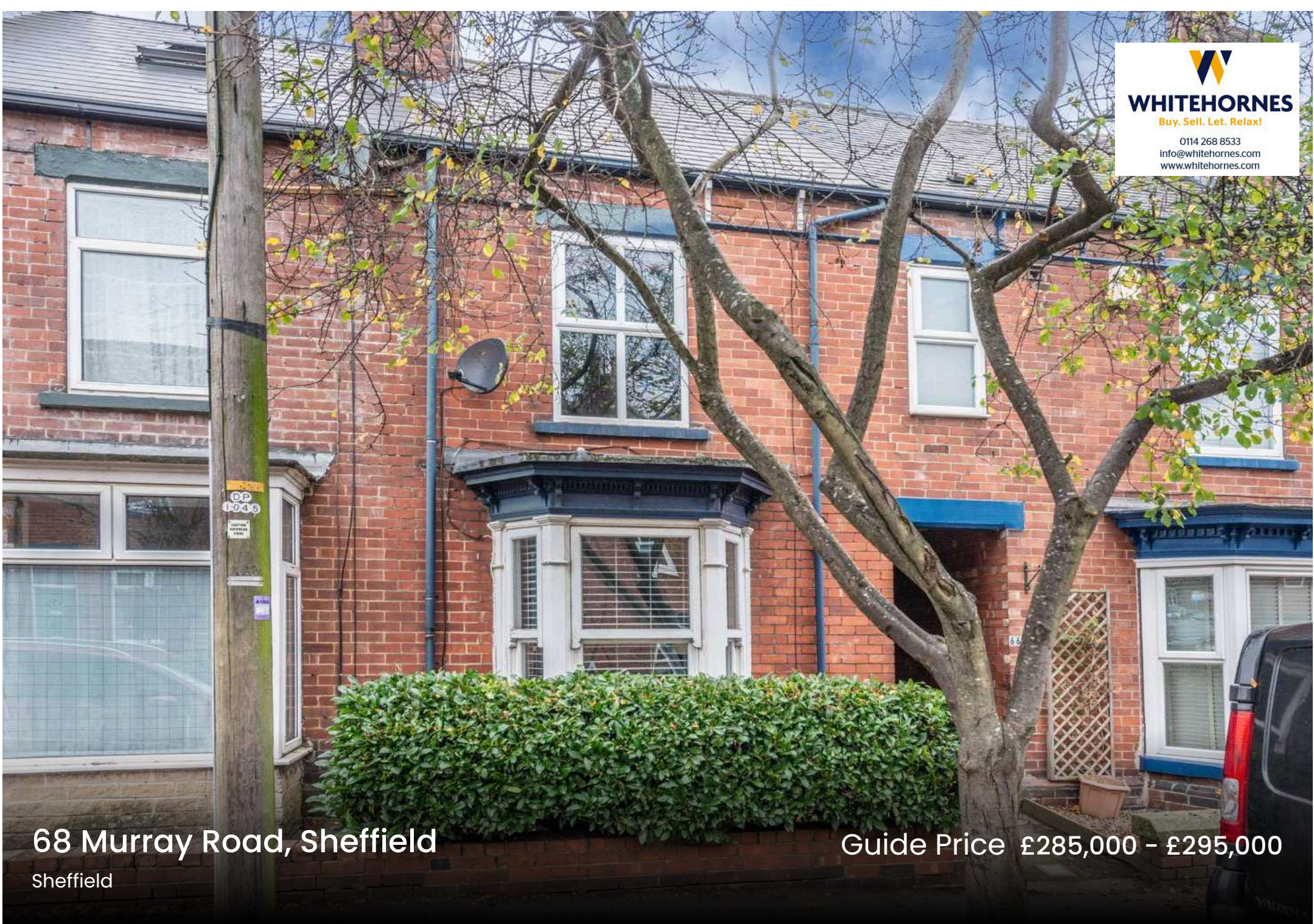




WHITEHORNES
Buy. Sell. Let. Relax!
0114 268 8533
info@whitehorns.com
www.whitehorns.com



68 Murray Road, Sheffield
Sheffield

Guide Price £285,000 - £295,000

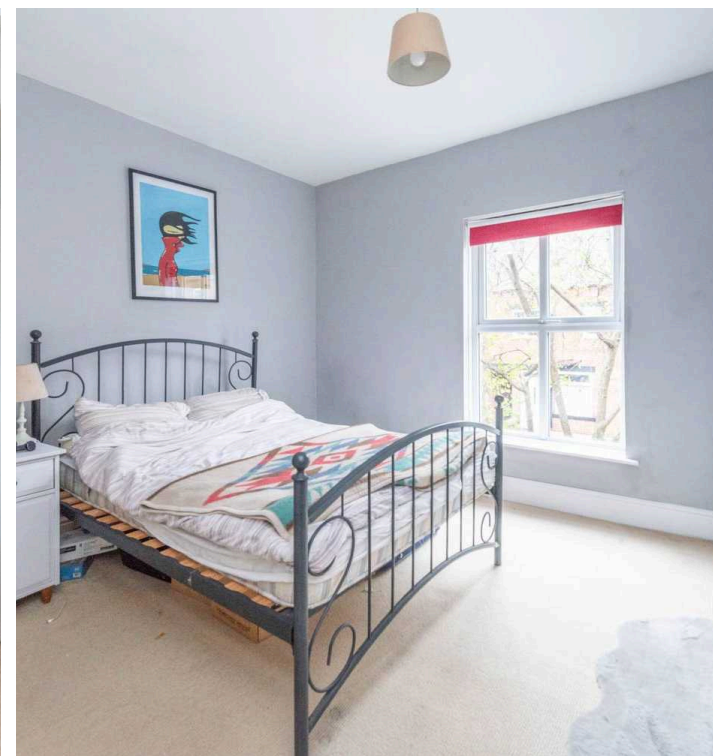
68 Murray Road

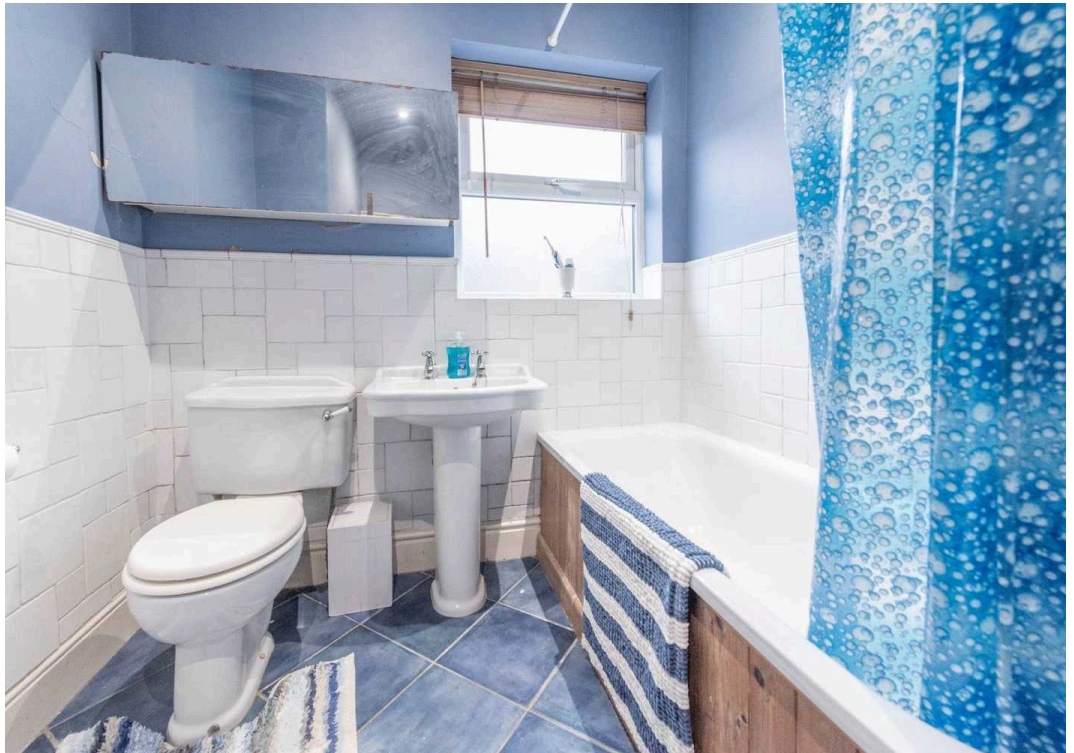
Sheffield, Sheffield

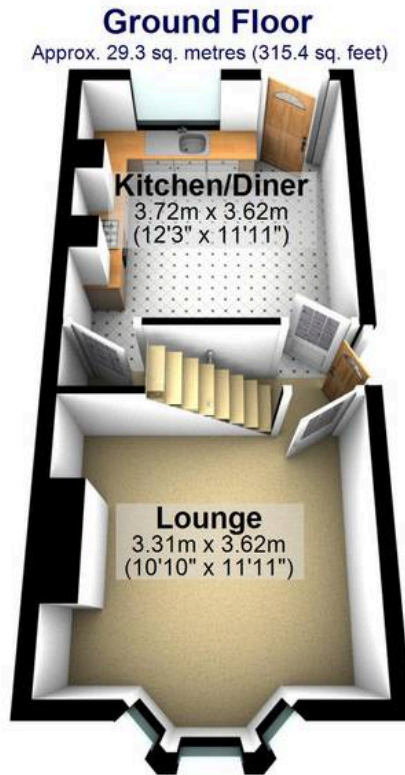
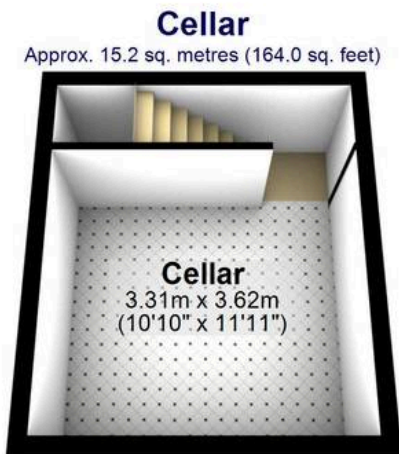
An absolutely fabulous three double bedroom, bay window, period, Victorian terrace property. Benefitting from the passageway to the rear of the first floor this wonderful home will be pitch perfect for the professional couple, first time buyers and young family alike. With three spacious and light floors of accommodation that total an impressive 1,070 sq feet along with private rear garden and on road parking to the front. With a newly installed rear kitchen/diner number sixty eight simply must be viewed internally to be fully appreciated. Located on this well sought after residential road within the very heart of ultra popular Ecclesall, set close to numerous independent cafes, eateries and shops within Ecclesall/Banner Cross and fashionable Sharrow Vale. Falling within catchment for excellent schools including both Greystones juniors and High Storrs secondary, Endcliffe park is a short stroll as is The Porter Valley, principal hospitals and universities are within easy access and

Council Tax band: B Tenure: Freehold

- FABULOUS THREE DOUBLE BEDROOM BAY WINDOWED VICTORIAN TERRACE PROPERTY
- STUNNING REAR NEWLY FITTED DINING KITCHEN WITH GARDEN ACCESS
- THREE FLOORS OF ACCOMMODATION TOTALLING AN IMPRESSIVE 1,070 SQ FEET
- HEART OF THIS ULTRA POPULAR SUBURB OF ECCLESALL ON THE SOUTH WEST OF THE CITY
- EXCELLENT SCHOOL CATCHMENTS AVAILABLE INCLUDING BOTH GREYSTONES JUBIORS AND HIGH STORRS SECONDARY
- PERFECT FOR THE PROFESSIONAL COUPLE FIRST BUY OR YOUNG FAMILY ALIKE







Total area: approx. 99.5 sq. metres (1070.5 sq. feet)

All measurements are approximate
Plan produced using PlanUp.



WHITEHORNES
Buy. Sell. Let. Relax!

0114 268 8533
info@whitehornes.com
www.whitehornes.com