



WHITEHORNES

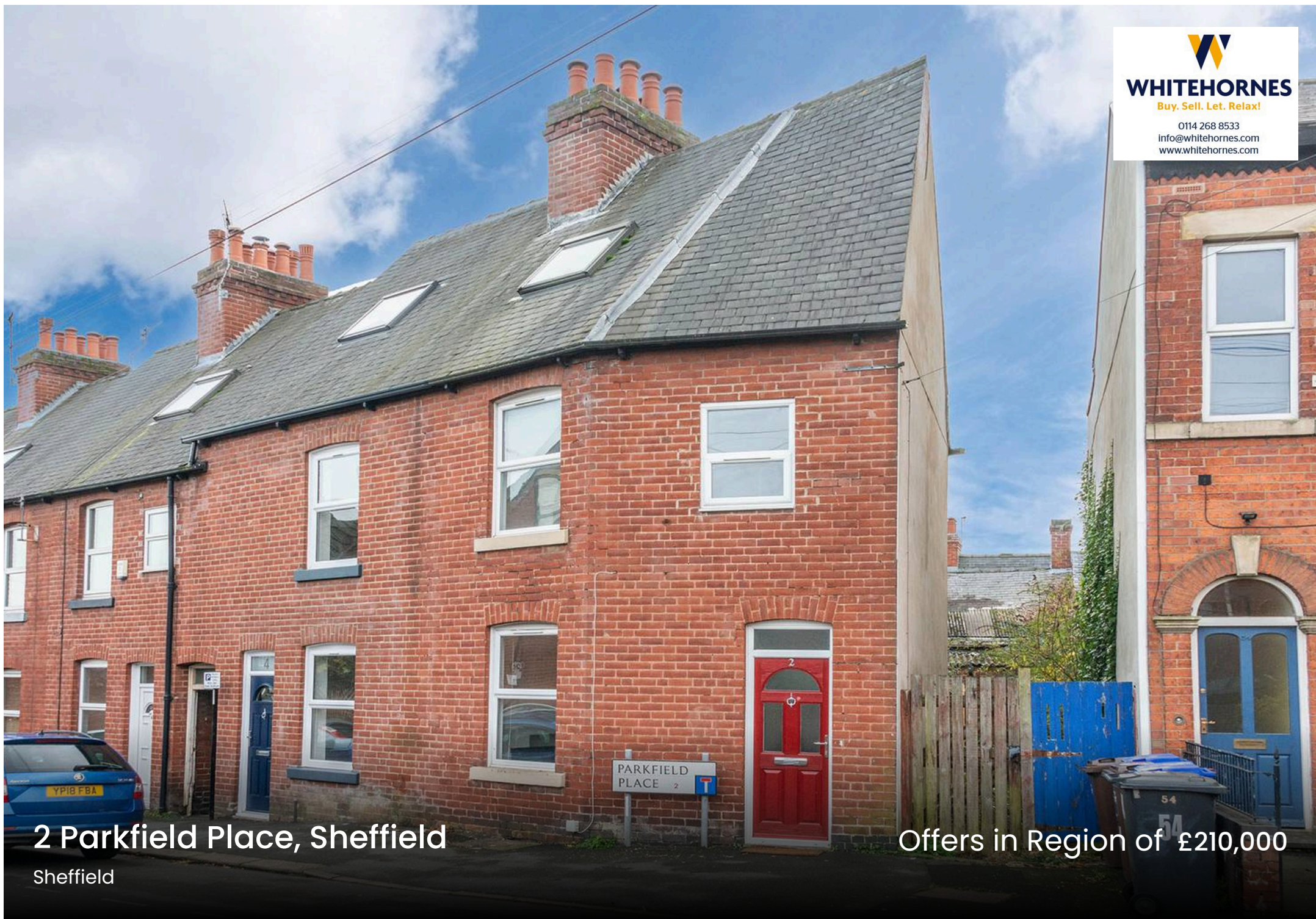
Buy. Sell. Let. Relax!

0114 268 8533
info@whitehorns.com
www.whitehorns.com

2 Parkfield Place, Sheffield

Sheffield

Offers in Region of £210,000



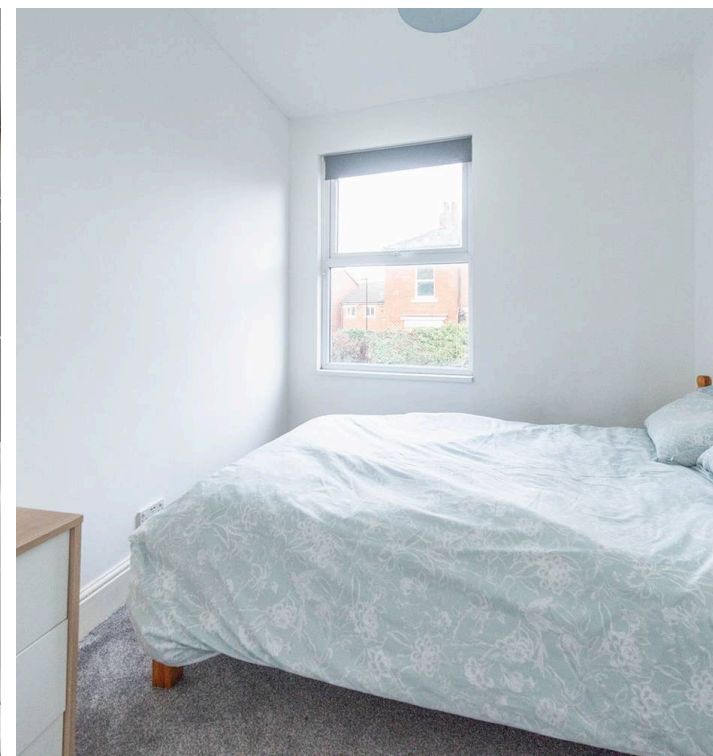
2 Parkfield Place

Sheffield, Sheffield

A fabulous opportunity presents itself in the form of this delightful three-bedroom end of terrace house, ideal for first-time buyers, professional couples, or young families. Situated within walking distance to central Sheffield and universities, this wonderful property is offered to the market with no chain involved and vacant possession. Benefitting from residents parking to the front and a private rear low maintenance garden, this home provides a perfect blend of convenience and comfort. The quirky internal layout over three impressive floors offers a unique living experience, while the quiet tucked-away cul de sac residential road provides a peaceful backdrop, all within close proximity to Abbeydale and London Roads amenities. A viewing is essential to fully appreciate the wonderful features this property has to offer. In brief the property comprises, front sitting room, rear fitted kitchen, three bedrooms and a bathroom are on

Council Tax band: A Tenure: Leasehold

- FABULOUS THREE BEDROOM END OF TERRACE
- PERFECT FOR THE FIRST TIME BUYER PROFESSIONAL COUPLE OR YOUNG FAMILY ALIKE
- AVAILABLE TO MARKET WITH NO CHAIN INVOLVED AND VACANT POSSESSION
- WALKING DISTANCE TO CENTRAL SHEFFIELD AND UNIVERSITIES
- RESIDENTS PARKING TO THE FRONT AND PRIVATE REAR LOW MAINTENANCE GARDEN
- QUIRKY INTERNAL LAYOUT OVER THREE IMPRESSIVE FLOORS
- QUIET TUCKED AWAY RESIDENTIAL ROAD YET CLOSE TO ABBEYDALE AND LONDON ROADS AMENITIES
- VIEWING ESSENTIAL TO DO FULL JUSTICE THIS



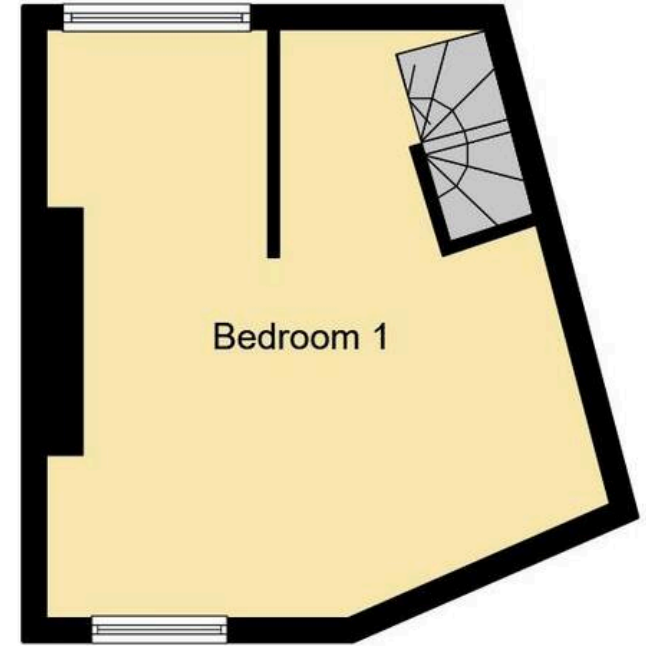




Ground Floor



First Floor



Second Floor

This floorplan is for illustrative purposes only and is not drawn to scale. Measurements, floor-areas, openings and orientations are approximate. They should be used for information only and do not form any part of an agreement. No liability is taken for any error or mis-statement. All parties must rely on their own inspection.