



WHITEHORSES

Buy. Sell. Let. Relax!

0114 268 8533
info@whitehorses.com
www.whitehorses.com

Apt 10, 154 Osborne Court, Osborne Road, Osborne Court

Sheffield

**Offers in Region of
£149,950**

Apt 10, 154 Osborne Court, Osborne Road

Osborne Court, Sheffield

Tucked away on this quiet little known back water is this smartly presented and deceptively spacious two bedroomed first floor apartment. Enjoying a separate detached garage and superb communal gardens along with the added benefit of no onward chain this wonderfully light property will be of particular interest to the professional couple or those looking to downsize. Placed within easy access to numerous local amenities within either fashionable Sharrowvale or Nether Edge with there array of independent shops, cafes and restaurants, central Sheffield and The Peak District is just up the road. With double glazing, visitors parking and large open sitting room the property is accessed via a communal hallway and has a fitted kitchen, double bedroom and bathroom. VALUER Andy Robinson Council Tax band: TBD

Tenure: Leasehold

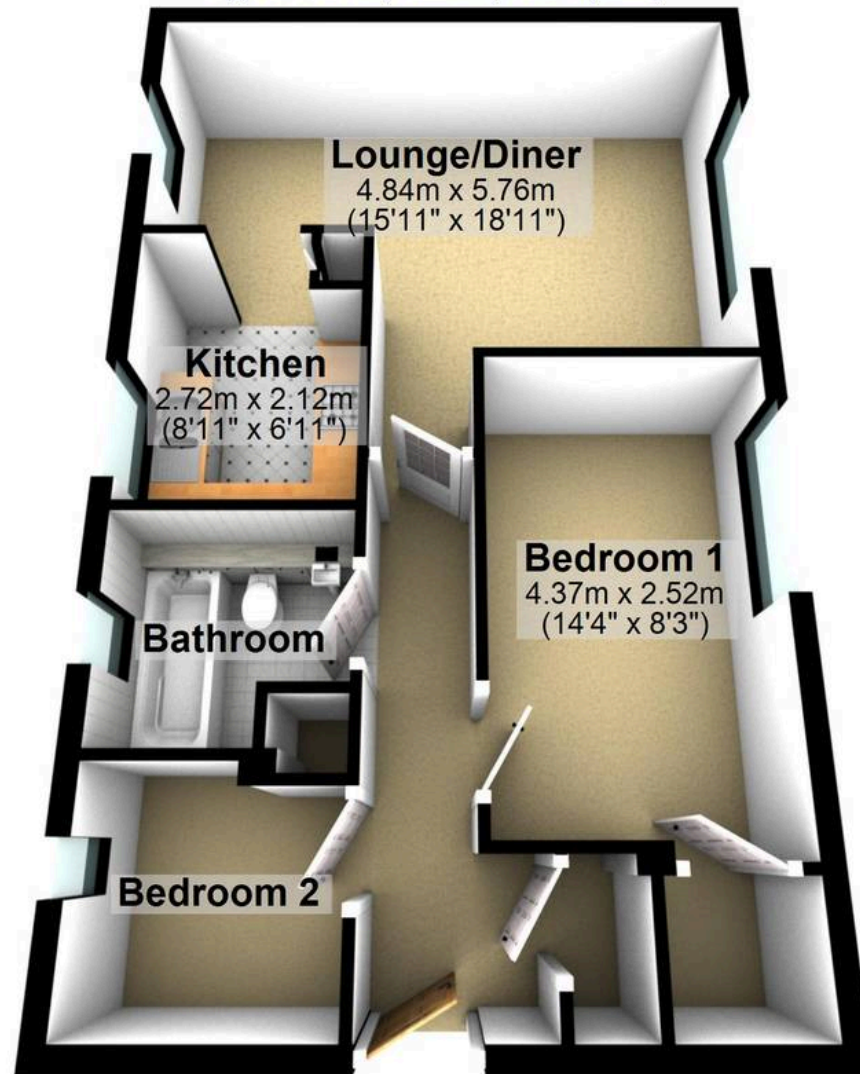
- EXCELLENT TWO BEDROOM APARTMENT
- QUIET TUCKED AWAY DEVELOPMENT IN THE HEART OF BRINCLIFFE
- AVAILABLE WITH NO ONWARD CHAIN INVOLVED AND VACANT POSSESSION
- PERFECT FOR THE FIRST TIME BUYER PROFESSIONAL COUPLE OR THOSE LOOKING TO DOWNSIZE
- DETACHED GARAGE AND AMPLE VISITOR BAYS
- CLOSE TO FASHIONABLE SHARROW VALE AND BANNER CROSS AMENITIES
- LOVELY COMMUNAL GARDENS FOE RESIDENTS TO ENJOY
- SPACIOUS AND LIGHT ACCOMMODATION ALL ON ONE LEVEL
- CLUSE TO PRINCIPAL HOSPITALS AND UNIVERSITIES





First Floor

Approx. 55.1 sq. metres (592.7 sq. feet)



Total area: approx. 55.1 sq. metres (592.7 sq. feet)

All measurements are approximate
Plan produced using PlanUp.