



WHITEHORSES

Buy. Sell. Let. Relax!

0114 268 8533
info@whitehorses.com
www.whitehorses.com

32 Oakbrook Court, Graham Road

Sheffield

Guide Price £225,000 – £250,000

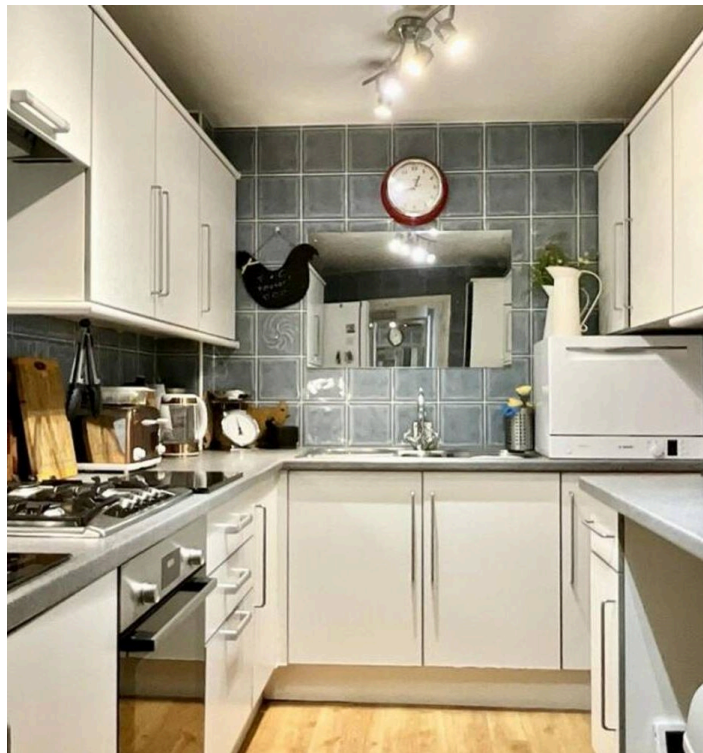
32 Oakbrook Court

Graham Road, Sheffield

Offered to the open market with the benefit of no upward chain and vacant possession is this super spacious two bedroomed second floor apartment. Forming part of this exclusive residential development in the very heart of Sheffield eleven within a short stroll of Endcliffe park, Oakbrook Road with its buzzing cafe scene, delis and restaurants. With the huge advantage of a single garage and large private balcony that enjoys stunning views to the front over the park. Offering extremely light and spacious accommodation all on one level that will allow the new buyer a real blank canvas to create a stunning finished home. Being of particular interest to the professional couple, those looking to down size and first time buyer alike the property must be viewed internally to be fully appreciated and in brief comprises entrance hall, large open sitting/dining room with balcony access, fitted kitchen, two bedrooms

Council Tax band: B Tenure: Leasehold

- FABULOUS TWO BEDROOM FIRST FLOOR APARTMENT
- AVAILABLE TO MARKET WITH NO UPWARD CHAIN INVOLVED AND VACANT POSSESSION
- PRIVATE BALCONY GARAGE AND WONDERFUL COMMUNAL GROUNDS
- PERFECT FOR THE PROFESSIONAL COUPLE OR THOSE LOOKING TO DOWNSIZE
- SET AT THE FRONT OF THE DEVELOPMENT WITH LOVELY VIEWS OVER THE PARK
- HEART OF FASHIONABLE ENDCLIFFE CLOSE TO NUMEROUS INDEPENDENT AMENITIES







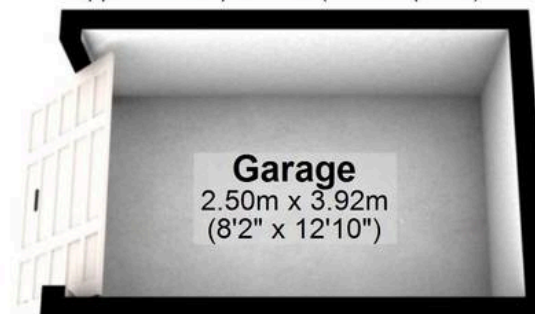
WHITEHORNES

Buy. Sell. Let. Relax!

0114 268 8533
info@whitehorns.com
www.whitehorns.com

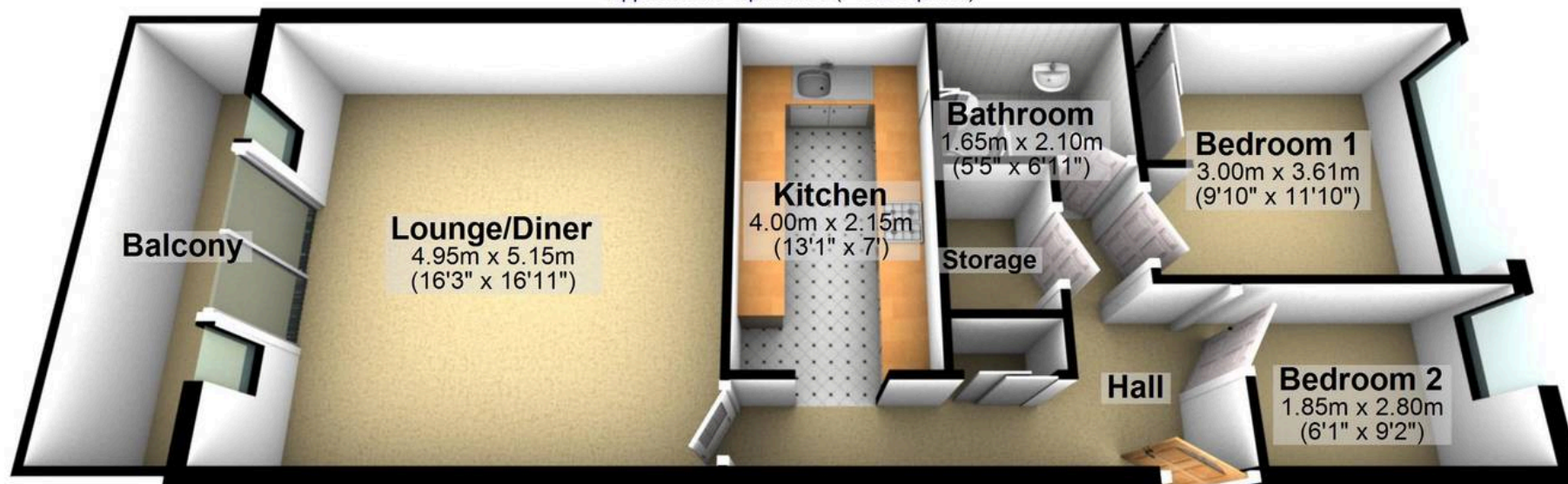
Garage

Approx. 9.8 sq. metres (105.3 sq. feet)



Ground Floor

Approx. 65.9 sq. metres (709.2 sq. feet)



Total area: approx. 75.7 sq. metres (814.4 sq. feet)

All measurements are approximate
Plan produced using PlanUp.