



WHITEHORNS

Buy. Sell. Let. Relax!

0114 268 8533
info@whitehorns.com
www.whitehorns.com

23 Newington Road, Endcliffe

Sheffield

Guide Price £415,000 - £425,000

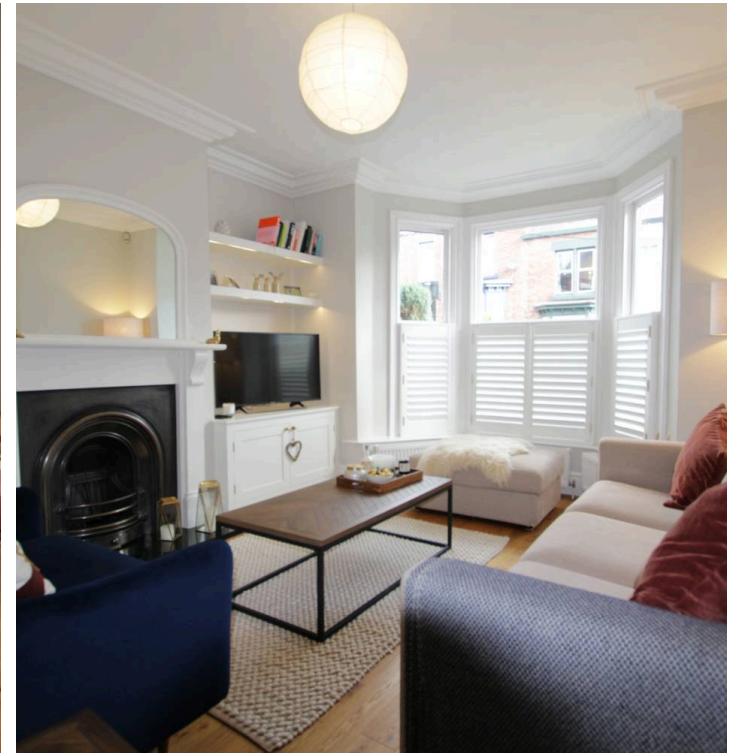
23 Newington Road

Endcliffe, Sheffield

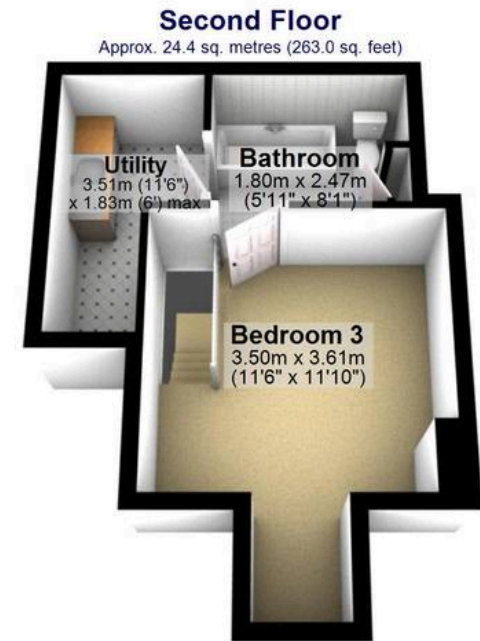
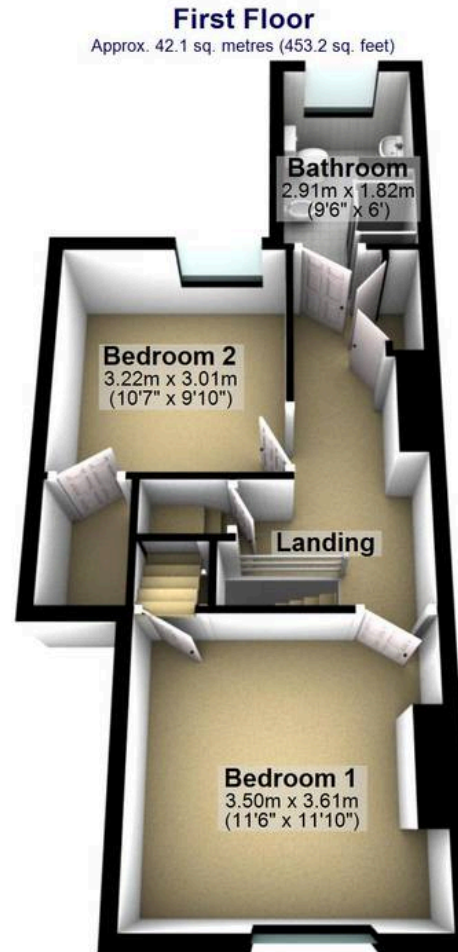
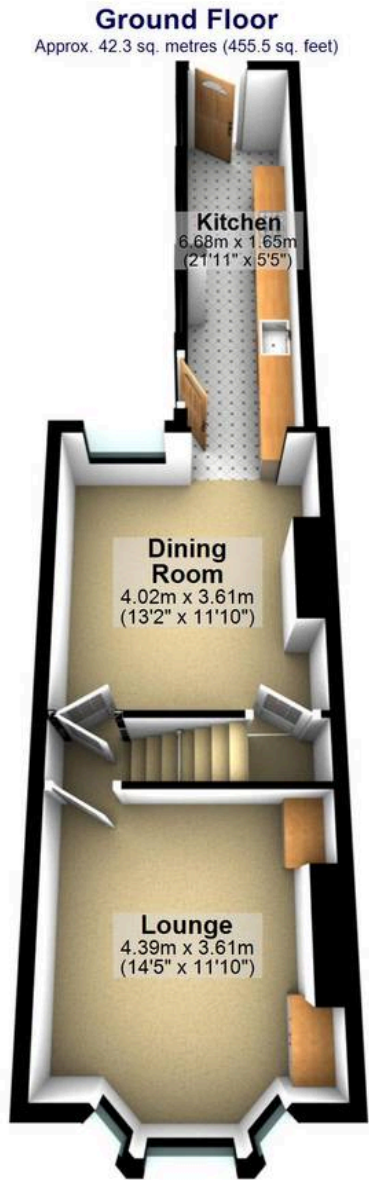
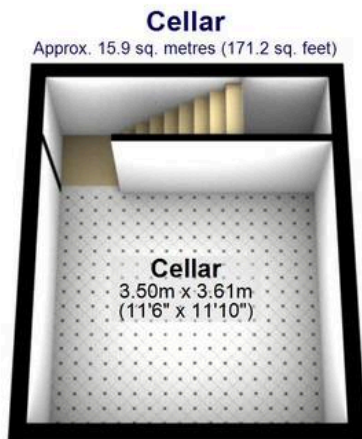
A simply stunning, immaculately presented, three double bedroomed, two bathroom, Victorian villa style terrace property. Retaining the original features, character and charm associated with a property from this era and effortlessly combining them with a contemporary modern twist that will be super popular with the professional couple and young family alike. Quietly tucked away on this well sought after residential road within a short few strides of fashionable Sharrowvale with its array of independent cafes, eateries and shops, Endcliffe park is yards away as are The Botanical gardens. Hunters bar juniors and High Storrs secondary schools are on offer as catchment, the Royal Hallamshire hospital and universities are also within easy reach and don't forget The Peak District is right next door. Enjoying three incredible floors of accommodation that total an impressive 1,342 sq feet, newly fitted

Council Tax band: B Tenure: Leasehold

- STUNNING THREE DOUBLE BEDROOM TWO BATHROOMED BAY WINDOWED VICTORIAN TERRACE
- TASTEFULLY EXTENDED TO THE REAR TO CREATE A LARGER THAN ANTICIPATED FITTED MODERN KITCHEN
- ORIGINAL PERIOD FEATURES CHARACTER AND CHARM ASSOCIATED WITH A PROPERTY OF THIS ERA EFFORTLESSLY BLENDED WITH A CONTEMPORARY FINISH
- QUIET TUCKED ROAD IN THE VERY HEART OF ULTRA POPULAR ENDCLIFFE ON THE SOUTH WEST OF THE CITY
- EXCELLENT SCHOOLING CATCHMENTS INCLUDING HUNTERS BAR AND HIGH STORRS SECONDARY
- SHORT STROLL TO FASHIONABLE SHARROW VALE AND







Total area: approx. 124.8 sq. metres (1342.9 sq. feet)

All measurements are approximate
Plan produced using PlanUp.