



8 Roach Road, Brincliffe
Sheffield

Guide Price £375,000 - £400,000

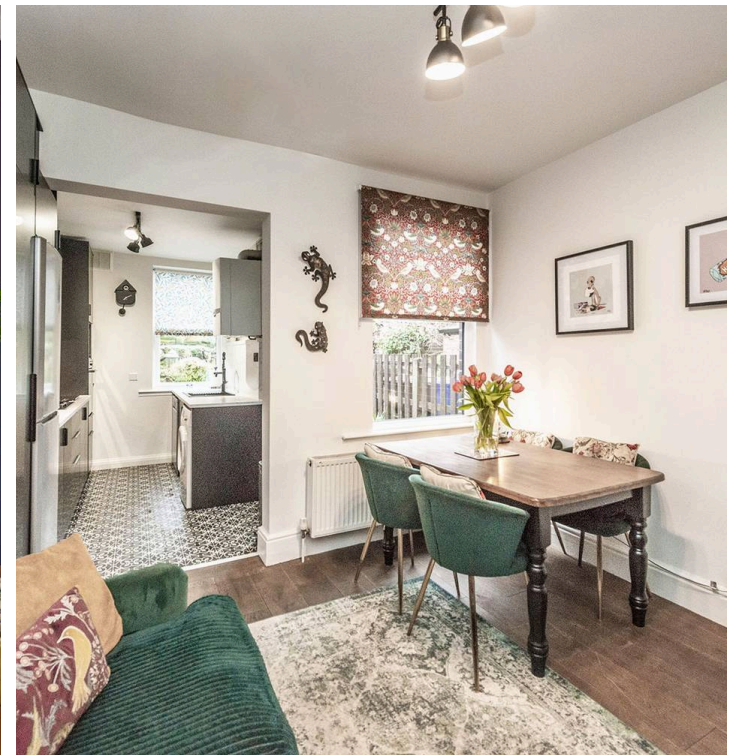
8 Roach Road

Brincliffe, Sheffield

A stunning, immaculately presented and very deceptive four bedroomed, bay windowed, single off shot Victorian terraced home. Having been refurbished to a super high spec by the current vendors with absolutely no expense spared to create this fabulous finish that has been careful to retain the original features, character and charm associated with a property from this era and effortlessly blended them with a cool and contemporary twist that is sure to be a hit with the professional couple and young family alike. Standing in this elevated position that ensures privacy and offers some impressive views over the city skyline to the front. With the huge added bonus of a single garage on the lower ground floor that ensures parking to the front of the property together with a landscaped rear private garden that has no through fare from neighbouring properties.

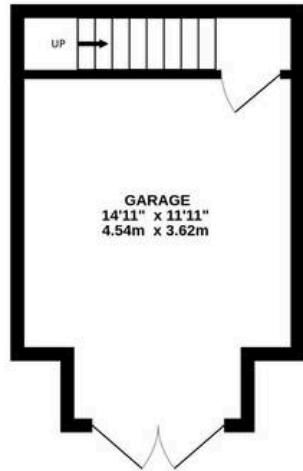
Council Tax band: B Tenure: Leasehold

- STUNNING FOUR BEDROOM PERIOD BAY WINDOW VICTORIAN TERRACE
- CONTEMPORARY FINISH MIXED EFFORTLESSLY WITH THE ORIGINAL PERIOD CHARACTER AND CHRM
- FINISHED TO THE VERY HIGHEST OF STANDARDS BY THE VENDOR WITH ABSOLUTELY NO EXPENSE SPARED
- ELEVATED POSITION ENSURING PRIVACY TOGETHER WITH SOME FABULOUS CITY SKYLINE VIEWS
- EXCELLENT SCHOOL CATCHMENTS INCLUDING HUNTERS BAR AND HIGH STORRS SECONDARY
- PERFECT FOR THE YOUNG FAMILY AND THE PROFESSIONAL COUPLE ALIKE

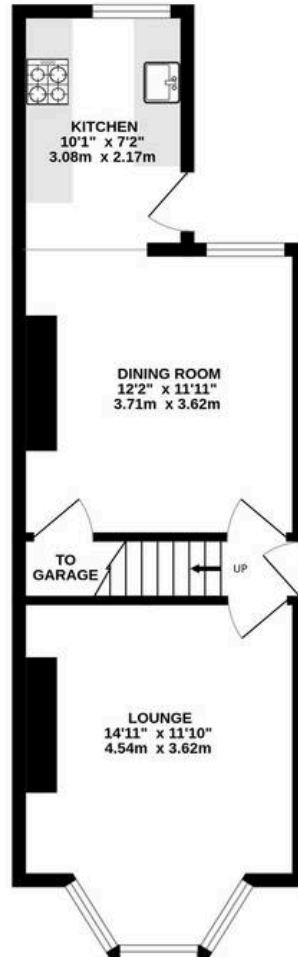




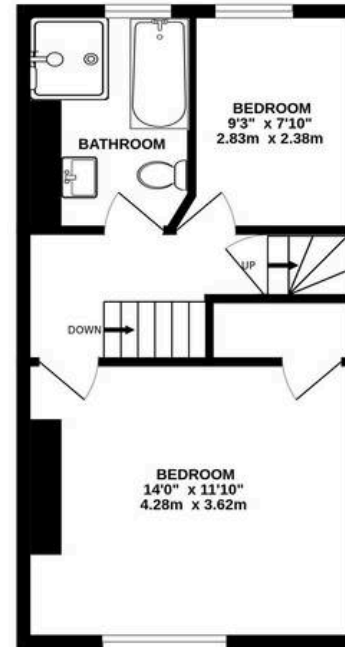
BASEMENT
196 sq.ft. (18.2 sq.m.) approx.



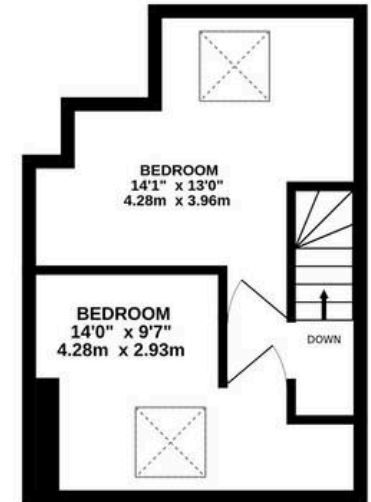
GROUND FLOOR
391 sq.ft. (36.3 sq.m.) approx.



1ST FLOOR
360 sq.ft. (33.5 sq.m.) approx.



2ND FLOOR
259 sq.ft. (24.1 sq.m.) approx.



TOTAL FLOOR AREA : 1207 sq.ft. (112.1 sq.m.) approx.

Whilst every attempt has been made to ensure the accuracy of the floorplan contained here, measurements of doors, windows, rooms and any other items are approximate and no responsibility is taken for any error, omission or mis-statement. This plan is for illustrative purposes only and should be used as such by any prospective purchaser. The services, systems and appliances shown have not been tested and no guarantee as to their operability or efficiency can be given.
Made with Metropix ©2024