



WHITEHORNS

Buy. Sell. Let. Relax!

0114 268 8533
info@whitehorns.com
www.whitehorns.com

73 Wath Road, Nether Edge

Sheffield

Guide Price £300,000 - £315,000

73 Wath Road

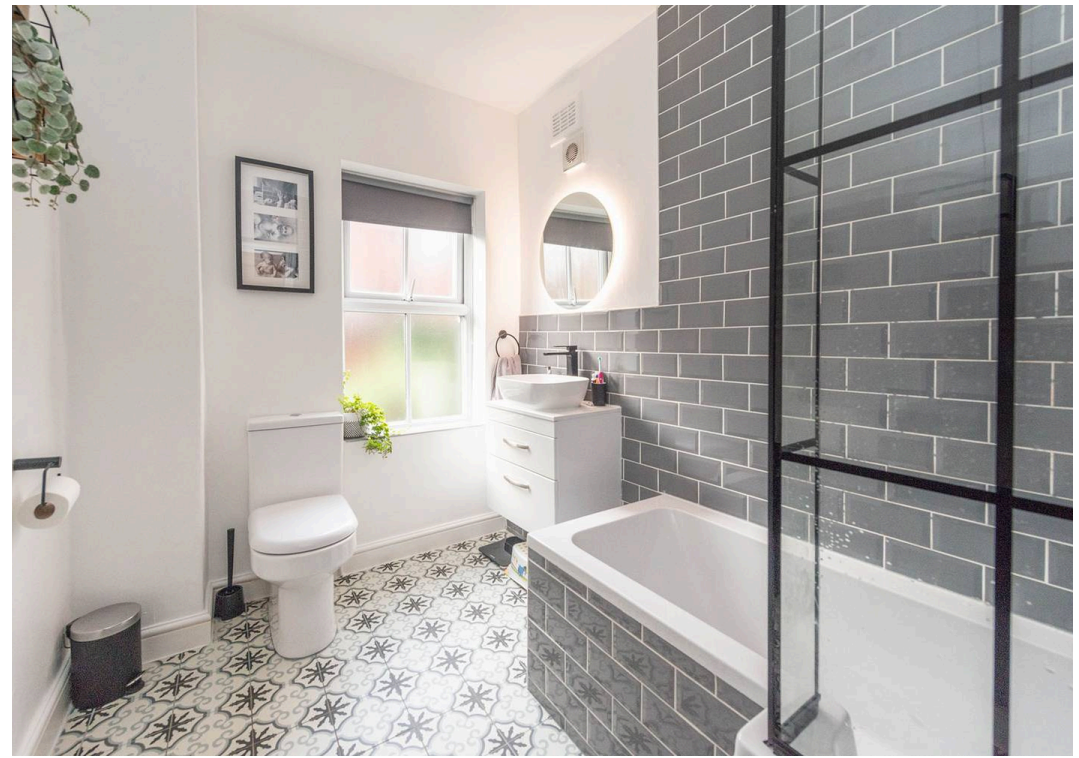
Nether Edge, Sheffield

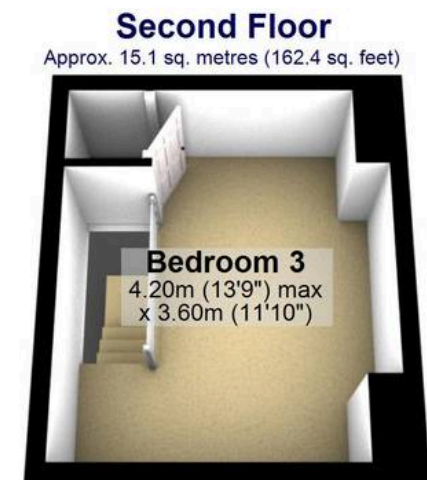
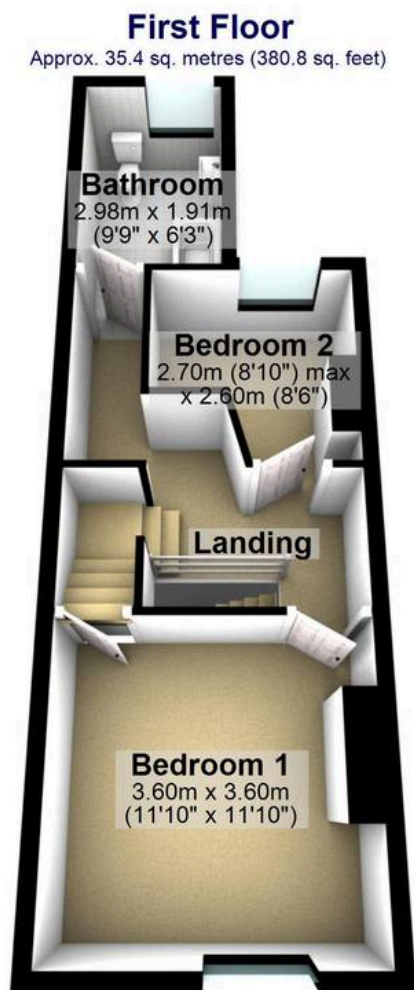
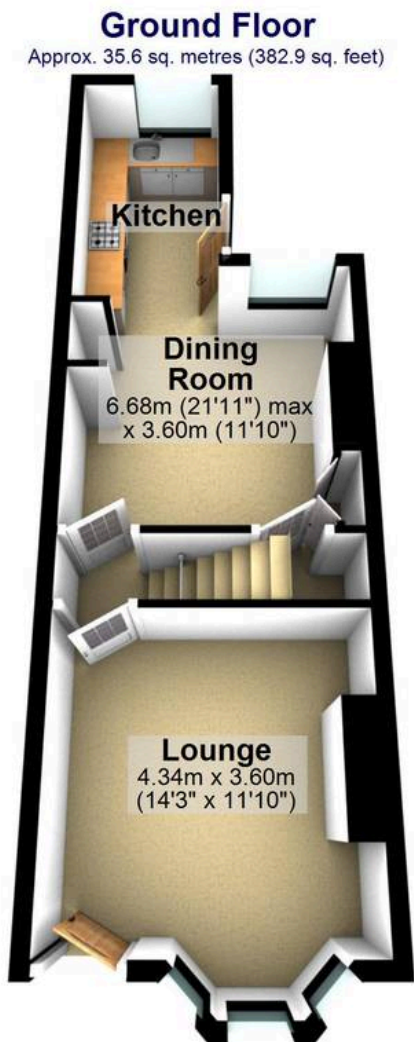
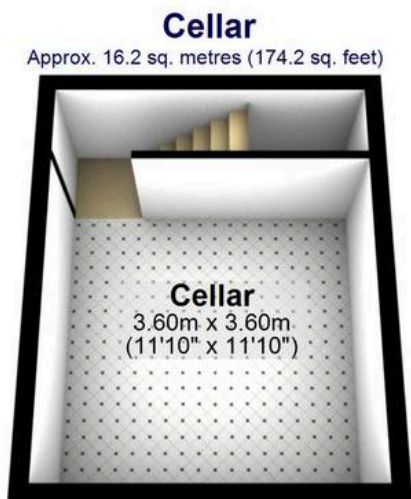
An absolutely stunning, immaculately presented and very well proportioned, three bedroom, bay window, Victorian terrace home. Having been finished internally to the very highest of standards by the current vendors with absolutely no expense spared including a newly fitted kitchen and bathroom. Having a double rear off shot that ensures this is one of the larger styles on offer, number 73 has also opened the kitchen in to the dining room to create this wonderful open plan flow to ground floor. With three fabulous floors of accommodation that total an impressive 1,100 sq feet it's easy to say this property will be incredibly popular with the professional couple, first time buyers and young family alike. Having been careful to retain the original period features, character and charm associated with a property from this era and effortlessly blending them with a contemporary modern vibe that really needs to

Council Tax band: A Tenure: Leasehold

- STUNNING THREE BEDROOM VICTORIAN BAY WINDOW TERRACED
- DOUBLR REAR OFF SHOT THAT ENSURES THIS IS ONE OF THE LARGER STYLES ON OFFER
- THREE FLOORS OF ACCOMMODATION TOTALLING AN IMPRESSIVE 1,100 SQ FEET
- NEWLY FITTED KITCHEN AND BATHROOM WITH KITCHEN OPENING IN TO THE DINING ROOM
- EXCELLENT LOCAL SCHOOL CATCHMENTS INCLUDING MERCIA SECONDARY
- FINISHED INTERNALLY TO THE VERY HIGHEST OF STANDARDS WITH NO EXPENSE SPARED
- PITCH PERFECT FOR THE PROFESSIONAL COUPLE FIRST BUY OR YOUNG FAMILY







Total area: approx. 102.2 sq. metres (1100.2 sq. feet)

All measurements are approximate
Plan produced using PlanUp.


WHITEHORNES
Buy. Sell. Let. Relax!

0114 268 8533
info@whitehorns.com
www.whitehorns.com