



**WHITEHORNS**

Buy. Sell. Let. Relax!

0114 268 8533  
info@whitehorns.com  
www.whitehorns.com

**56 Westwood Road, Sheffield**

Sheffield

**Guide Price £700,000 - £725,000**

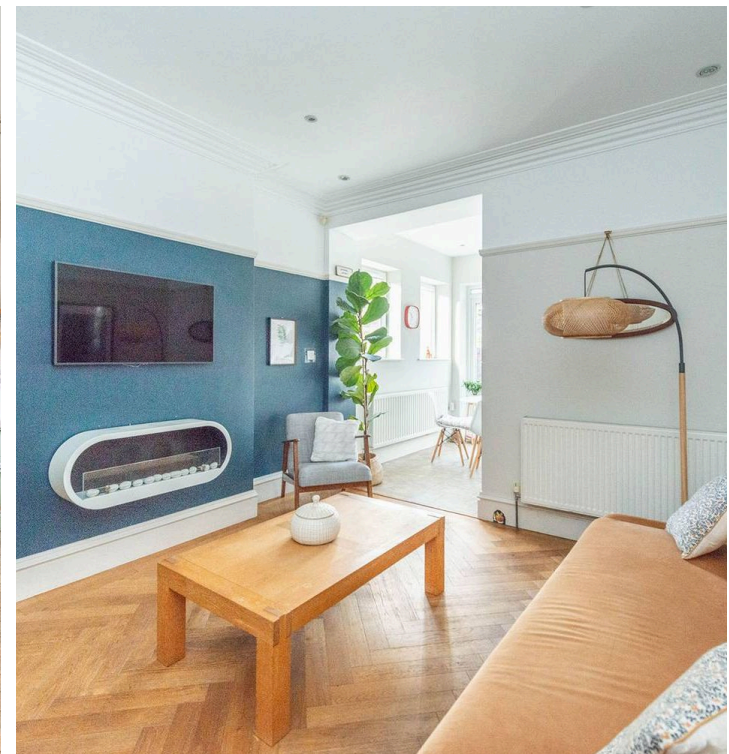
# 56 Westwood Road

Sheffield, Sheffield

GUIDE PRICE £700,000-£725,000 An incredibly rare opportunity has arisen to purchase this truly remarkable five bedroom, bay window semi detached home. With a fully converted basement that has its own private entrance and full planning consent/building regulations that will be perfect for the dependent relative, older child or an Airbnb letting potential. Retaining the original period features, character and charm associated with a property from this era and effortlessly blended them with modern, contemporary feel that really needs to be viewed to be fully understood. With a log burning stove to the principal reception room along with solid wood flooring and sizeable rear sunny garden the property stands in this elevated position ensuring privacy and provides some excellent views over the park to the front.

Council Tax band: E Tenure: Leasehold

- INCREDIBLY RARE OPPORTUNITY TO MARKET FOR A PROPERTY OF THIS STYLE AND SIZE
- STUNNING PERIOD FIVE BEDROOM SEMI DETACHED FAMILY HOME WITH THREE BATH/SHOOWER ROOMS
- FULLY SELF CONTAINED LOWER GROUND FLOOR APARTMENT WITH PRIVATE ENTRANCE AND FULL PLANNING REGULATIONS
- FOUR INCREDIBLE FLOORS OF ACCOMMODATION THAT TOTAL AN IMPRESSIVE 1,916 SQ FEET
- EXCELLENT LOCAL SCHOOLING CATCHMENTS INCLUDING NETEHR GREEN JUNIOR AND AND HIGH STORRS SECONDARY
- POSITIONED AT THE END OF THIS QUIET NO THROUGH ROAD WITH THE ALLOTMENTS TO THE SIDE







Total area: approx. 178.1 sq. metres (1916.6 sq. feet)

All measurements are approximate  
Plan produced using PlanUp.



**WHITEHORNS**

Buy. Sell. Let. Relax!

0114 268 8533  
info@whitehorns.com  
www.whitehorns.com