



WHITEHORSES

Buy. Sell. Let. Relax!

0114 268 8533
info@whitehorses.com
www.whitehorses.com

205 Ringinglow Road, Bents Green

Sheffield

Guide Price £625,000 - £650,000

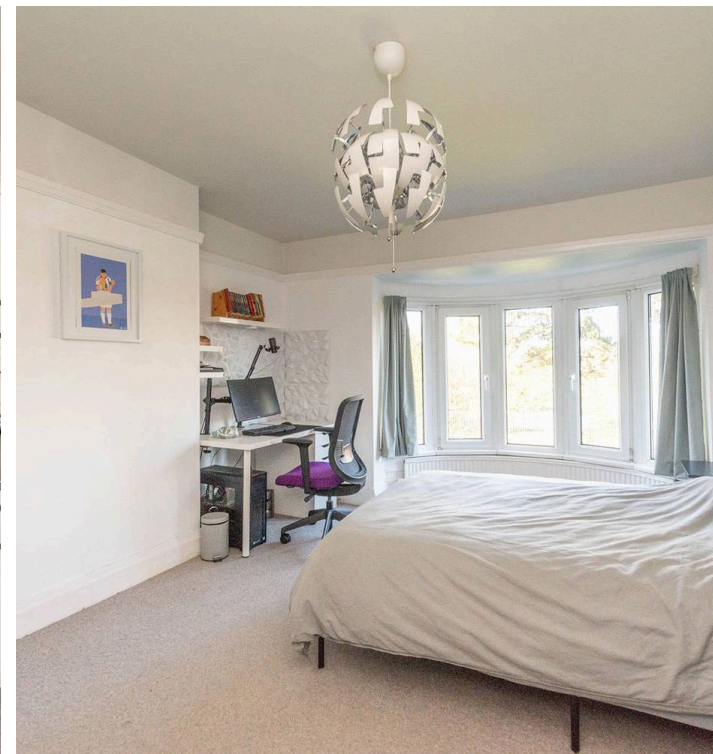
205 Ringinglow Road

Bents Green, Sheffield

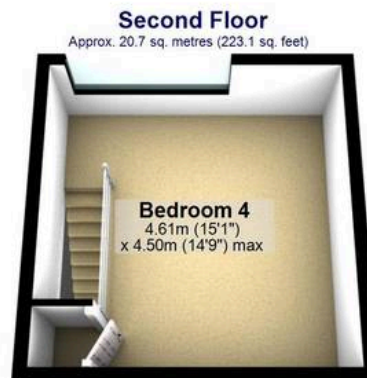
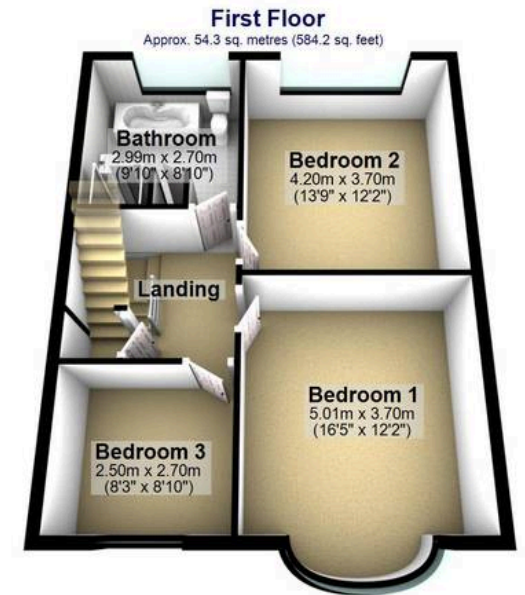
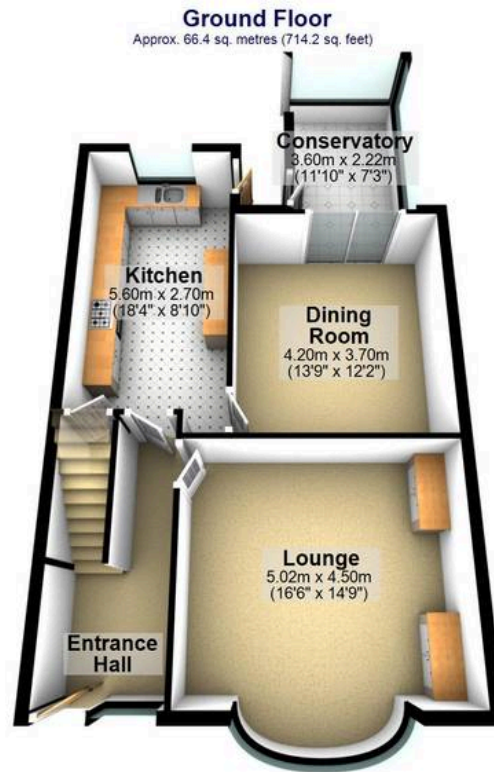
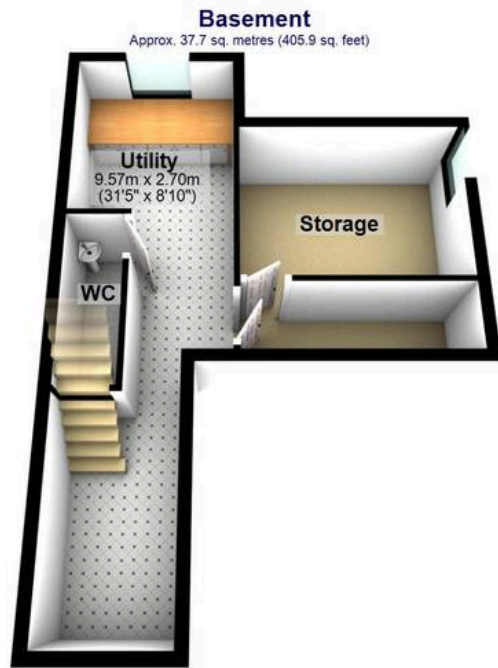
An outstanding and very deceptive four bedroomed, bay windowed semi detached family home. Standing in this commanding position with uninterrupted views across High Storrs playing fields and towards Fulwood number 205 offers an increasingly rare opportunity to acquire a property of this size and calibre in one of Sheffield's most sought after and desirable residential suburbs. Located in the heart of Ringinglow on the south west fringes of the city within walking distance of the open countryside the property lies within catchment for well respected schools including Ecclesall infants/juniors and High Storrs secondary and numerous amenities of Bents Green. With carefully considered and very spacious accommodation laid out over three floors that will appeal to the growing family market, viewing is essential to do full justice. The property enjoys a very spacious flat plot with superb larger than average

Council Tax band: E Tenure: Leasehold

- FABULOUS FOUR BEDROOM BAY WINDOW SEMI DETACHED FAMILY HOME
- THREE FLOORS OF ACCOMMODATION TOTALLING AN IMPRESSIVE 2,146 SQ FEET
- INCREDIBLE FAR REACHING VIEWS OVER THE MAYFIELD VALLEY AND THE SCHOOL PLAYING FIELDS
- LARGE REAR SUNNY PRIVATE FLAT FAMILY GARDEN
- WELL SOUGHT AFTER SCHOOL CATCHMENTS INCLUDING ECCLESALL INFANT/JUNIORS GREYSTONES JUNIORS AND HIGH STORRS SECONDARY
- AMPKE PARKING TO THE FRONT AND DETACHED REAR GARAGE
- INCREDIBLE FAR REACHING VIEWS TO THE FRONT







Total area: approx. 199.4 sq. metres (2146.8 sq. feet)

All measurements are approximate
Plan produced using PlanUp.