



WHITEHORSES

Buy. Sell. Let. Relax!

0114 268 8533
info@whitehorses.com
www.whitehorses.com



344 Carter Knowle Road, Ecclesall

Sheffield

Guide Price £425,000 - £450,000

344 Carter Knowle Road

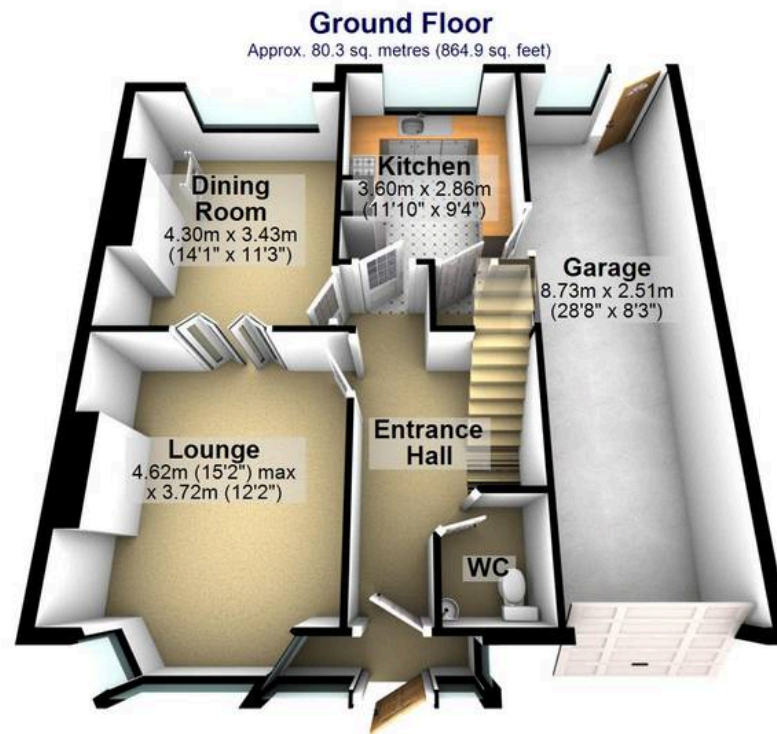
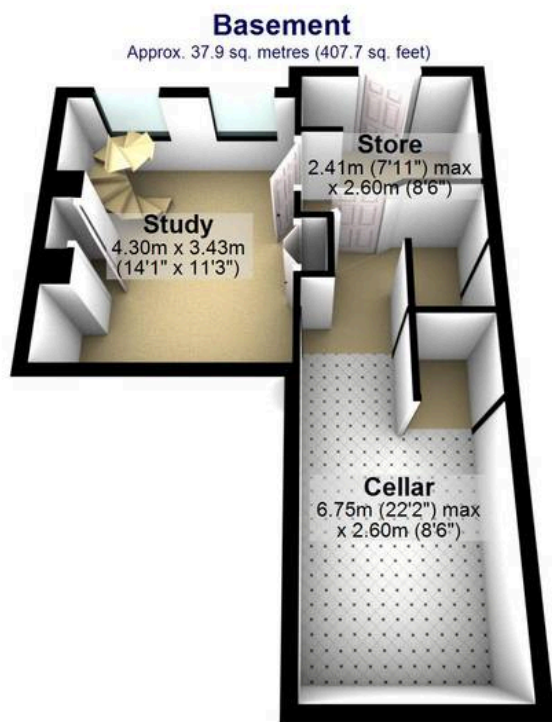
Ecclesall, Sheffield

An incredibly rare opportunity has arisen to purchase this fabulous three good sized bedroom, bay window, semi-detached home. Enjoying an incredible backdrop over Brincliffe and beyond from an elevated position this beautiful family home has three spacious, light and versatile floors of accommodation totalling 1,844 sq ft with a converted basement. Offering one of the largest rear private gardens on the road together with a driveway and single garage to the front, this beautiful property will be popular with the growing family market looking for a forever home and simply must be viewed to be fully appreciated. Allowing future scope to further extend the existing property (subject to planning) as neighbouring properties have done so to the side and loft to create additional accommodation if required. Located towards the top of this well regarded residential road within the heart of Ecclesall on the south Council Tax band: D Tenure: Freehold

- FABULOUS THREE GOOD SIZED BEDROOMED BAY WINDOW SEMI DETACHED PROPERTY
- EXCELLENT LOCAL AMENITIES A SHORT STROLL AWAY WITHIN BANNER CROSS
- WELL SOUGHT AFTER RESIDENTIAL SUBURB OF ECCLESALL ON THE SOUTH WEST OF THE CITY
- STUNNING REAR PRIVATE SIZEABLE FAMILY GARDEN AND WONDERFUL VIEWS TOWARDS BRINCLIFFE
- PERFECT FOR THE GROWING FAMILY LOOKING FOR A FOREVER HOME WITH VIEWING ESSENTIAL
- OFSTED RATED EXCELLENT SCHOOLING CATCHMENTS







Total area: approx. 171.4 sq. metres (1845.1 sq. feet)

All measurements are approximate
Plan produced using PlanUp.



WHITEHORNES

Buy. Sell. Let. Relax!

0114 268 8533
info@whitehornes.com
www.whitehornes.com