



WHITEHORNS

Buy. Sell. Let. Relax!

0114 268 8533
info@whitehorns.com
www.whitehorns.com

919 Ecclesall Road, Ecclesall

Sheffield

Guide Price £300,000-£325,000

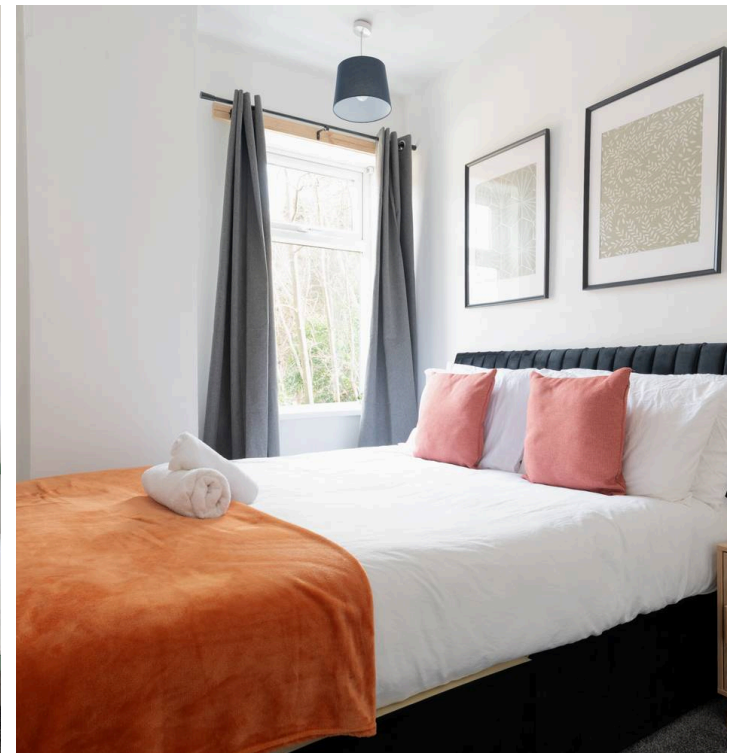
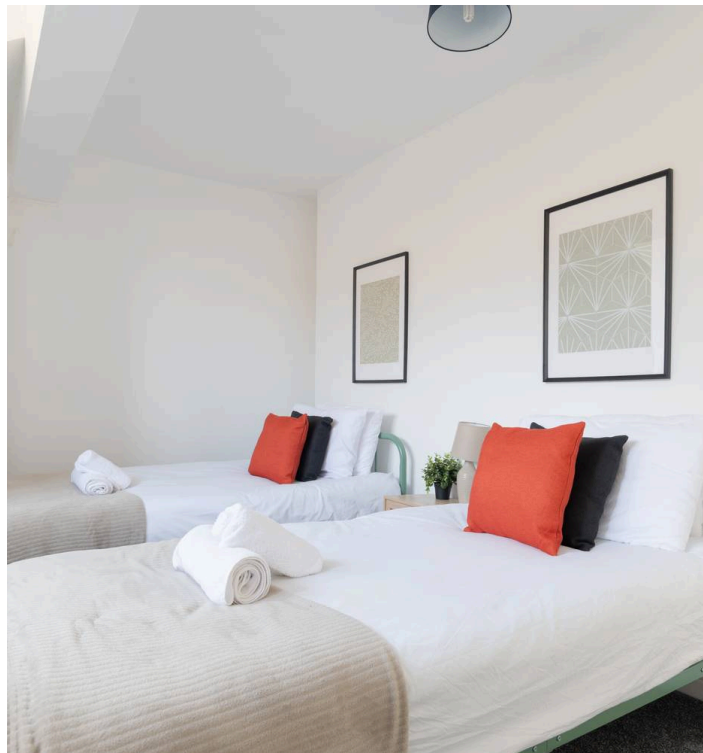
919 Ecclesall Road

Ecclesall, Sheffield

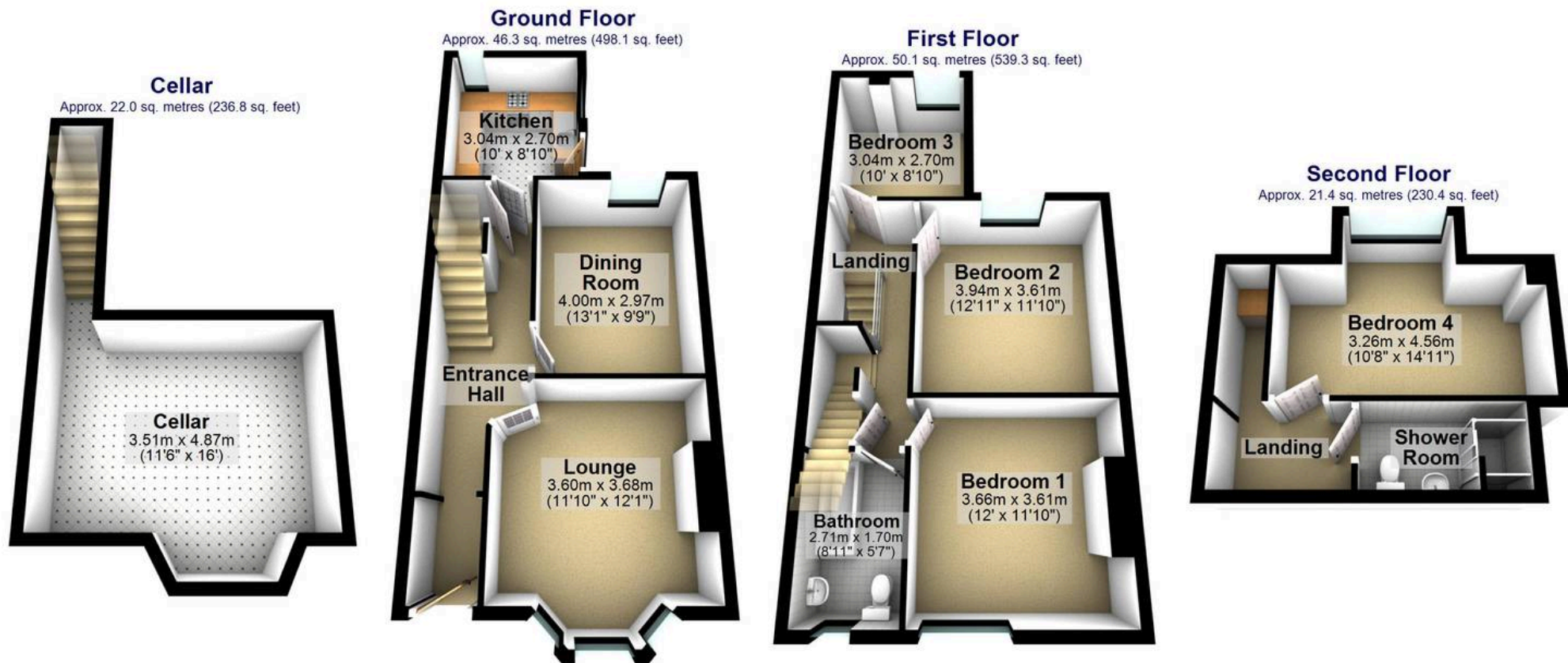
Standing in this elevated position that ensures a huge degree of privacy and enjoying some fine views to both the front and rear, together with ensuring is this substantial, four double bedroomed, two bathroom, bay windowed, stone fronted, Victorian villa terraced. Number 919 boasts an impressive 1,249 sq ft of bright and spacious accommodation across four floors. Briefly consisting of a lounge, dining room, kitchen, four bedrooms, bathroom and shower room, to the outside is a private, no through garden. Located in the very heart of fashionable Ecclesall, Endcliffe and Bingham parks are a short stroll, independent cafes, eateries and shops are within Banner Cross and Sharrow Vale, universities, hospitals are all close by and The Peak District is on the doorstep. Falling within catchment for Ofsted rated excellent Greystones Primary and High Storrs secondary it's easy to say that viewing is essential to fully appreciate this fabulous home.

Council Tax band: C Tenure: Leasehold

- FOUR BEDROOMED VICTORIAN MID TERRACED PROPERTY
- CLOSE TO NUMEROUS INDEPENDANT AMENITIES WITHIN BANNER CROSS, INCLUDING EATERIES, RESTUARANTS, BARS, AND SHOPS
- ENDCLIFFE/BINGHAM PARKS AND THE PORTER VALLEY A SHORT STROLL AWAY
- LOCAL SCHOOL CATCHMENTS INCLUDING OFSTED RATED 'OUTSTANDING' HUNTERS BAR SCHOOL ALSO GREYSTONES PRIMARY AND HIGH STORRS SECONDARY
- IDEAL FOR GROWING FAMILIES AND YOUNG PROFFESIONALS ALIKE







Total area: approx. 139.8 sq. metres (1504.7 sq. feet)

All measurements are approximate
Plan produced using PlanUp.


WHITEHORNES
Buy. Sell. Let. Relax!

0114 268 8533
info@whitehornes.com
www.whitehornes.com