



WHITEHORSES

Buy. Sell. Let. Relax!

0114 268 8533
info@whitehorses.com
www.whitehorses.com

35 Westwick Crescent, Greenhill

Sheffield

Guide Price **£595,000**

35 Westwick Crescent

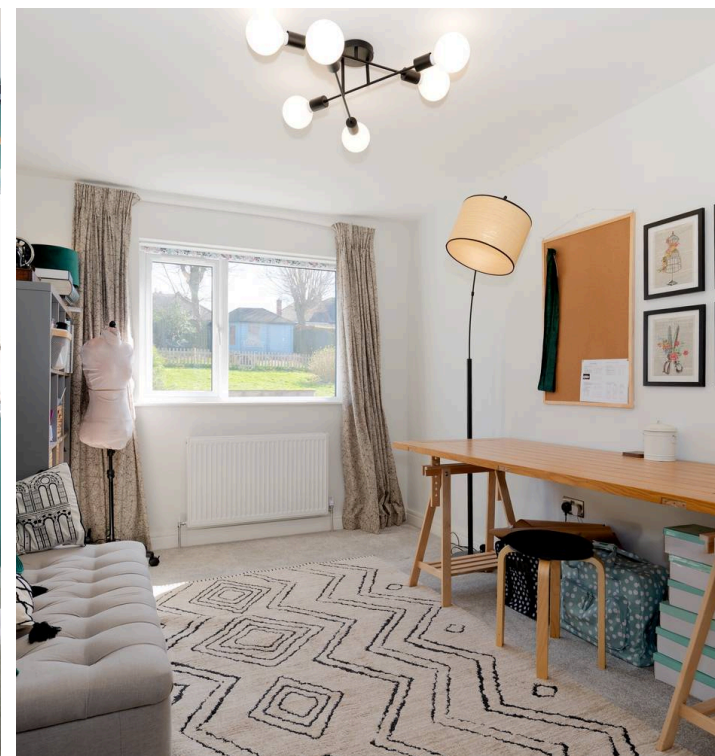
Greenhill, Sheffield

Early viewing is advised for this imposing and modern four bedroom, two bathroomed detached family home. Being located in the heart of the ever popular suburb of Greenhill with not only a wealth of local amenities but reputable local schools and expansive green spaces all within easy walking distance. Having been finished throughout to the very highest of standards with fantastic and light open plan living that flow effortlessly into the large and well enclosed south facing garden. The property is offered for sale with no onward chain and briefly consists of entrance hallway, downstairs WC, lounge, well appointed kitchen/dining room, four bedrooms (one with en-suite) and family bathroom. Outside is the large garden and off road parking to the front.

Council Tax band: D

Tenure: Leasehold

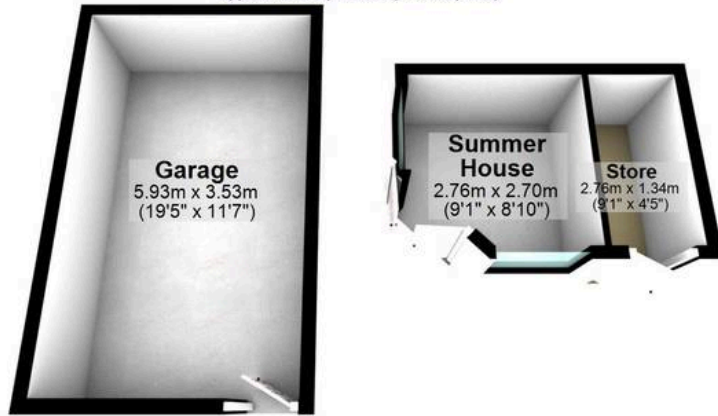
- FOUR BEDROOMED DETACHED PROPERTY
- SITUATED IN THE HEART OF ULTRA POPULAR GREENHILL
- QUIET NO THROUGH RESIDENTIAL ROAD
- LIGHT AND BRIGHT ACCOMODATION TOTALLING AN IMPRESSIVE 2,070 SQ FT
- EXCELLENT LOCAL SCHOOL CATCHMENTS AVAILABLE
- BEAUTIFUL REAR, PRIVATE GARDEN AND SUMMER HOUSE WITH MAINS POWER
- PERFECT FOR THE FAMILY MARKET WITH VIEWING ESSENTIAL
- LEASEHOLD PROPERTY AND COUNCIL TAX BAND D £2,274 P/A
- CLOSE TO THE OPEN WOODS AND BEAUCHIEF ABBEY
- AMPLE DRIVEWAY PROVIDING EASY OFF ROAD PARKING AND EV CHARGING POINT





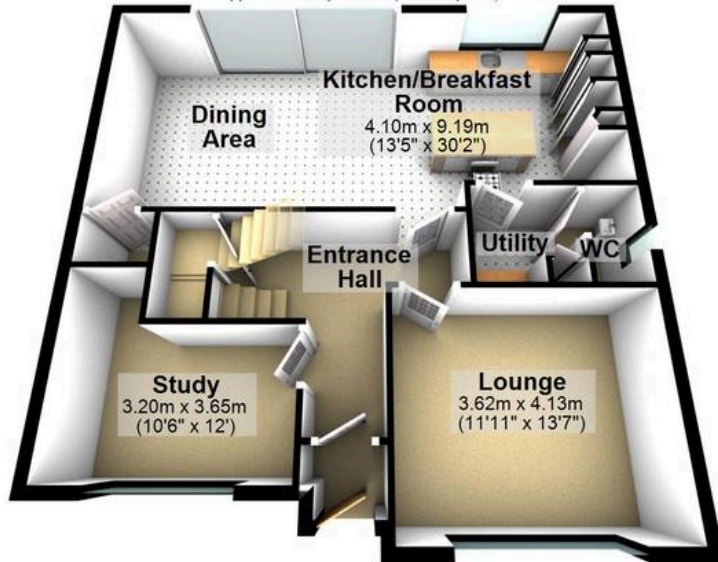
Outbuildings

Approx. 31.6 sq. metres (340.6 sq. feet)



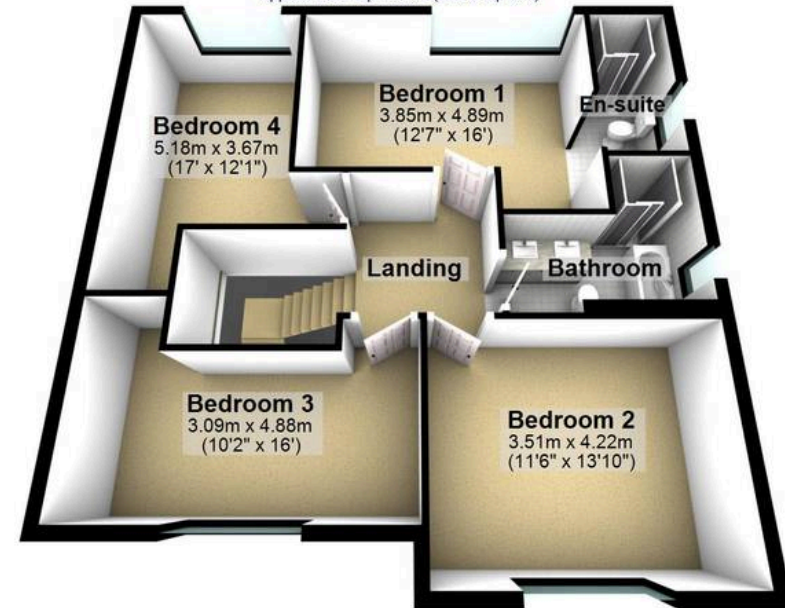
Ground Floor

Approx. 80.6 sq. metres (867.4 sq. feet)



First Floor

Approx. 80.2 sq. metres (862.9 sq. feet)



Total area: approx. 192.4 sq. metres (2070.8 sq. feet)

All measurements are approximate
Plan produced using PlanUp.