



**WHITEHORNS**

Buy. Sell. Let. Relax!

0114 268 8533  
info@whitehorns.com  
www.whitehorns.com

**44 High Storrs Crescent, Sheffield**

Sheffield

Guide Price £400,000 - £425,000



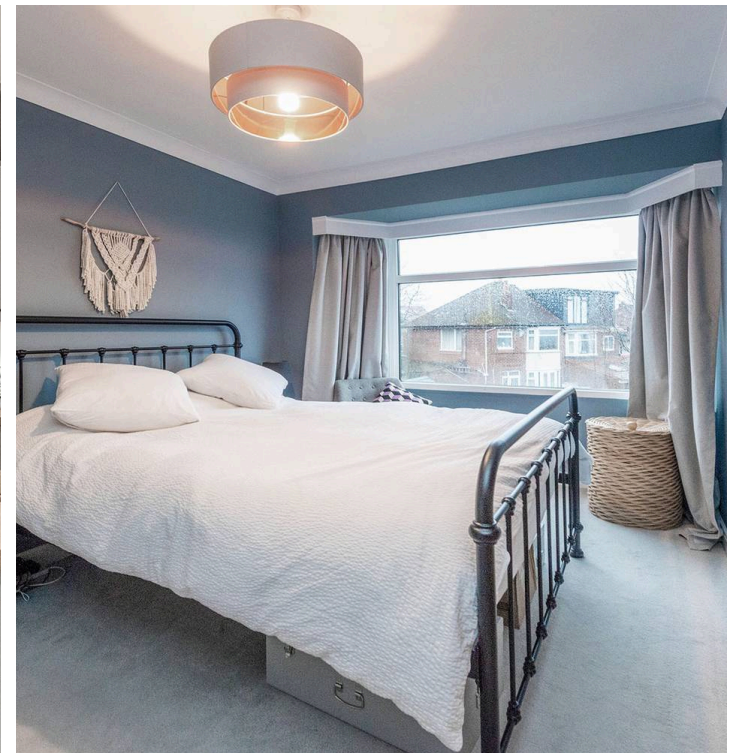
# 44 High Storrs Crescent

Sheffield, Sheffield

An absolutely gorgeous, three bedroom semi detached home. Offering double bay windows to both the front and rear that literally flood the property with natural light this beautiful property is sure to be of interest to the growing family and simply must be viewed to be fully appreciated. With off road driveway, garage and sunny private rear garden together with newly fitted bathroom and kitchen. The accommodation currently runs over two floors but allows vast potential (subject to planning) to extend to the loft, rear and side as neighbouring properties have done so to create a forever home. Quietly tucked away on this well regarded residential road in the very heart of ultra popular High Storrs, numerous local amenities can be found at Bents Green, walks in The Porter Valley are also on offer and principal hospitals and universities are close by.

Council Tax band: C Tenure: Leasehold

- STUNNING THREE BEDROOM SEMI DETACHED FAMILY HOME
- MULTIPLE BAY WINDOWED TO THE FRONT AND REAR THAT ENSURES AN INCREDIBLY LIGHT FEEL
- QUIET RESIDENTIAL ROAD IN THE VERY HEART OF ULTRA POPULAR HIGH STORRS
- NEWLY FITTED KITCHEN AND BATHROOM
- EXCELLENT SCHOOLING CATCHMENTS INCLUDING ECCLESALL JUNIORS AND HIGH STORRS SECONDARY
- PRIVATE REAR SUNNY GARDEN GARAGE AND PARKING
- HUGE POTENTIAL TO CONVERT THE LOFT EXTEND TO THE REAR AND SIDE SUBJECT TO PLANNING
- WALKING DISTANCE TO THE PORTER VALLEY
- PITCH PERFECT FOR THE GROWING FAMILY WITH



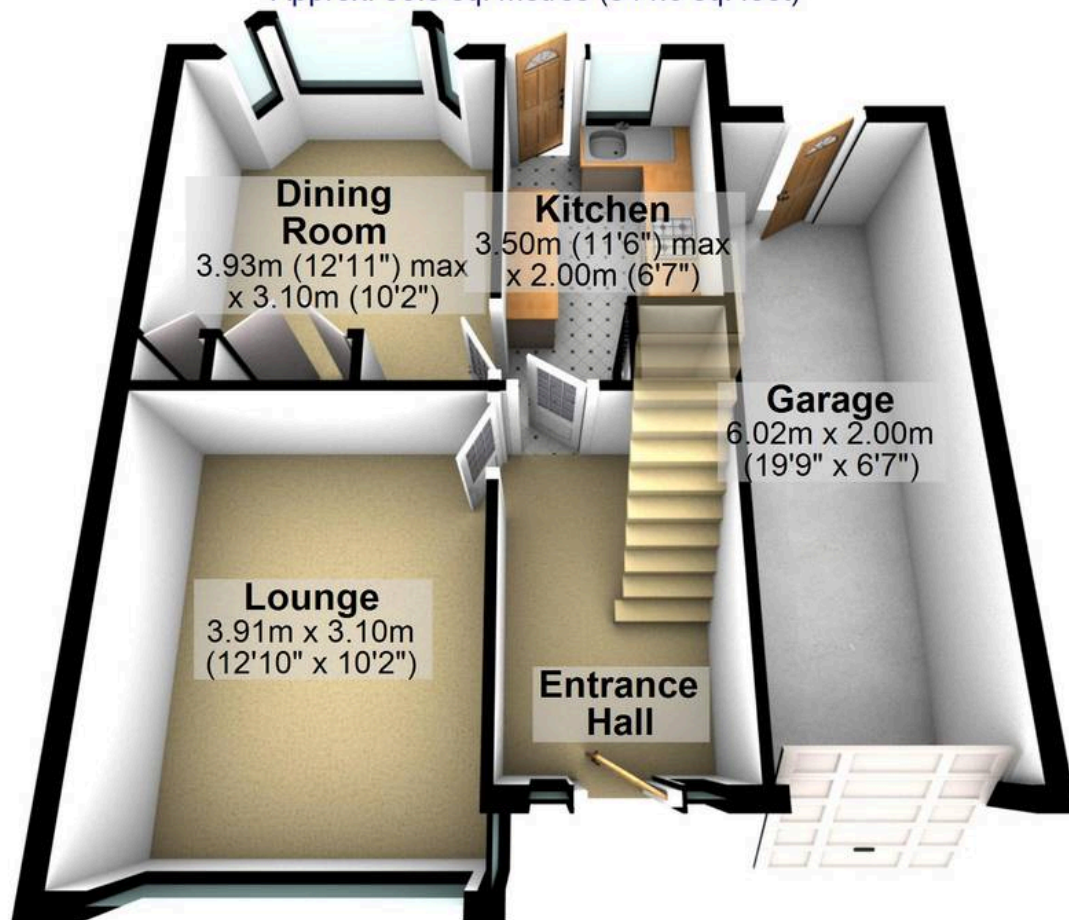






## Ground Floor

Approx. 50.5 sq. metres (544.0 sq. feet)



## First Floor

Approx. 37.9 sq. metres (407.8 sq. feet)



Total area: approx. 88.4 sq. metres (951.8 sq. feet)

All measurements are approximate  
Plan produced using PlanUp.