



WHITEHORNES

Buy. Sell. Let. Relax!

0114 268 8533
info@whitehorns.com
www.whitehorns.com

68 Louth Road, Ecclesall

Sheffield

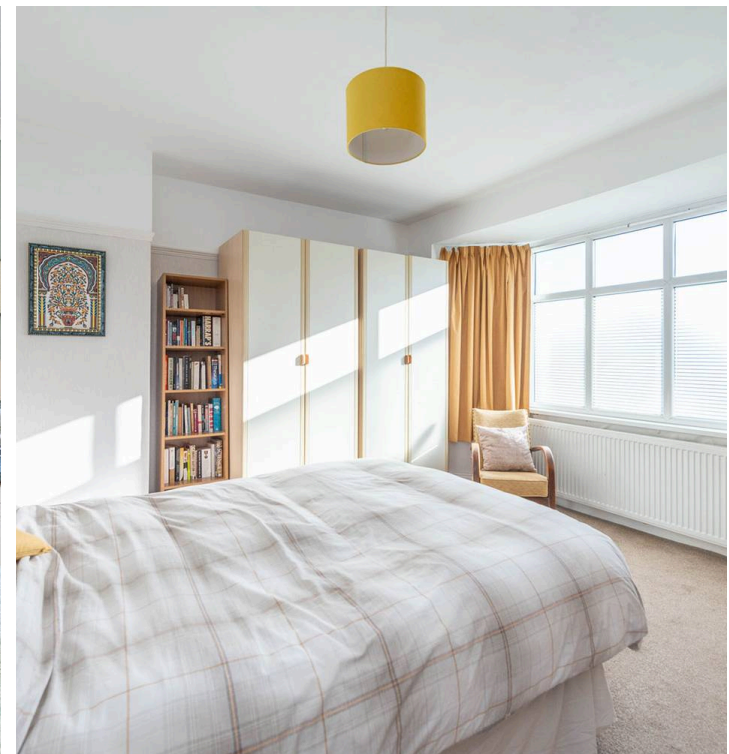
Guide Price £370,000 - £380,000

68 Louth Road

Ecclesall, Sheffield

Located in the heart of the fashionable suburb of Ecclesall within the south west of the city, on this tree lined residential road is this superb three bedroomed double bay-windowed semi-detached property. Number 68 currently spans across two floors, totalling an impressive 933 sq ft of light and bright accommodation that offers the new buyers opportunity to further extend as neighbouring properties have done so (subject to planning) to create a forever home. Standing in this elevated position to the front that ensures a huge degree of privacy together with some wonderful views over the city skyline and on road parking to the front. Enjoying catchment for some of the finest schools within Sheffield including Greystones Primary School and High Storrs Secondary together with fantastic green spaces such as Endcliffe/ Bingham Parks and Botanical Gardens a short stroll Council Tax band: C Tenure: Leasehold

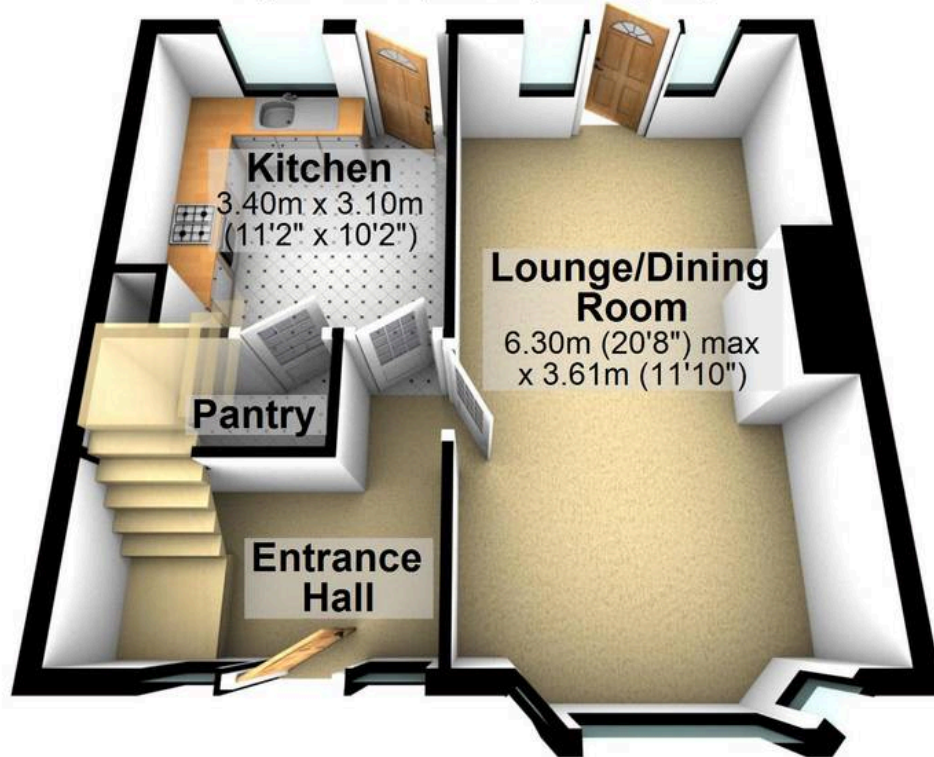
- LOVELY THREE BEDROOM BAY WINDOW SEMI DETACHED HOME
- PERFECT FOR THE GROWING FAMILY MARKET WITH VIEWING ESSENTIAL
- POTENTIAL SUBJECT TO PLANNING TO EXTEND AS NEIGHBOURS HAVE DONE
- ELEVATED POSITION ENSURING PRIVACY AND SOME FAR REACHING VIEWS TO THE FRONT
- EXCELLENT SCHOOLING CATCHMENTS INCLUDING GREYSTONES PRIMARY AND HIGH STORRS SECONDARY
- BEAUTIFUL REAR PRIVATE SUNNY GARDEN AND ON ROAD PARKING TO THE FRONT
- CLOSE BOTH BINGHAM AND ENDCLIFFE PARKS TOGETHER WITH BANNER CROSS AMENITIES EASY ACCESS TO PRINCIPAL HOSPITALS AND





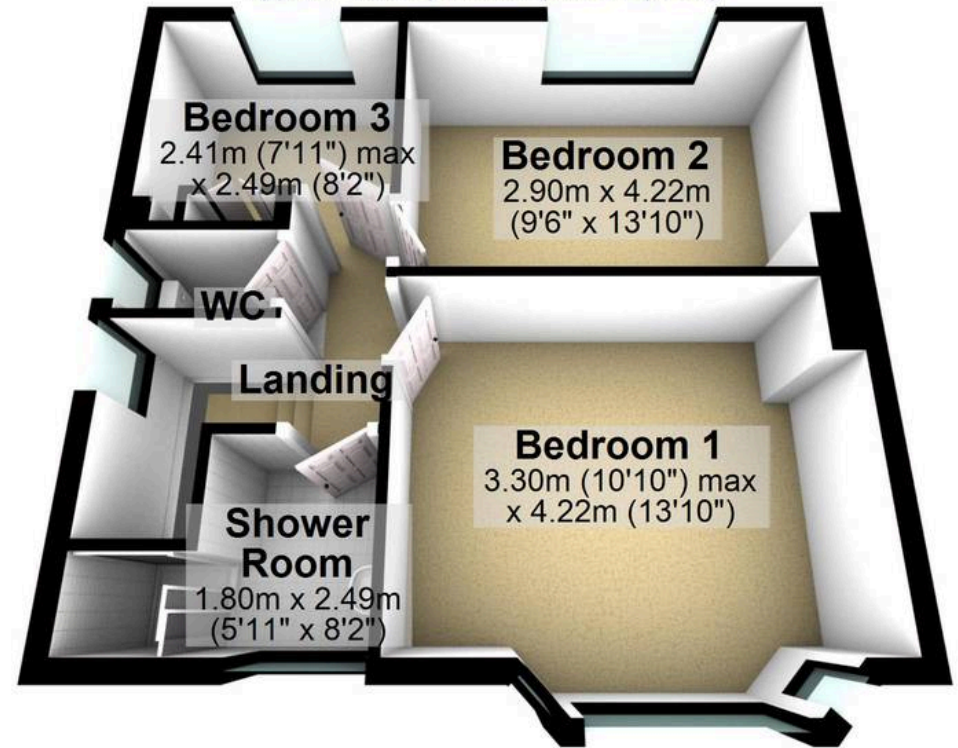
Ground Floor

Approx. 43.3 sq. metres (466.5 sq. feet)



First Floor

Approx. 43.3 sq. metres (466.5 sq. feet)



Total area: approx. 86.7 sq. metres (933.0 sq. feet)

All measurements are approximate
Plan produced using PlanUp.


WHITEHORNES
Buy. Sell. Let. Relax!

0114 268 8533
info@whitehorns.com
www.whitehorns.com