



WHITEHORNES
Buy. Sell. Let. Relax!
0114 268 8533
info@whitehornes.com
www.whitehornes.com

5 Barncliffe Glen, Upper Fulwood

Sheffield

Guide Price £475,000 - £485,000

5 Barncliffe Glen

Upper Fulwood, Sheffield

An incredibly rare opportunity has arisen to purchase this wonderful, two double bedroom, detached bungalow property. Quietly tucked away on this little known cul de sac within the very heart of ultra popular Upper Fulwood on the cusp of the open countryside and The Peak District. Enjoying some truly stunning views to the rear over The Mayfield Valley and across to Ringinglow along with a sizeable private driveway, detached garage and spacious front and rear private gardens. Perfectly suited to a host of buyers including those looking to downsize or the family there is plenty of further potential to extend the existing property (subject to planning) to the loft rear or side. With two spacious double bedrooms, fitted kitchen, double window aspect lounge the property has a light feel throughout its impressive 1,310 sq feet.

Council Tax band: D Tenure: Leasehold

- INCREDIBLY RARE OPPORTUNITY TO MARKET FOR A TWO DOUBLE BEDROOM DETACHED BUNGALOW
- QUIET TUCKED AWAY CUL DE SAC POSITION IN THE HEART OF ULTRA POPULAR UPPER FULWOOD
- SENSATIONAL VIEWS OVER THE MAYFIELD VALLEY TOWARDS RINGINGLOW
- LARGE DRIVEWAY ATTACHED GARAGE AND LOVELY SUNNY FRONT AND REAR GARDENS
- PERFECT FOR A WIDE RANGE OF BUYERS INCLUDING THOSE LOOKING TO DOWNSIZE OR THE FAMILY
- HUGE AS YET UNTAPPED POTENTIAL TO EXTEND SUBJECT TO PLANNING IF REQUIRED
- EXCELLENT LOCATION CLOSE TO AMENITIES





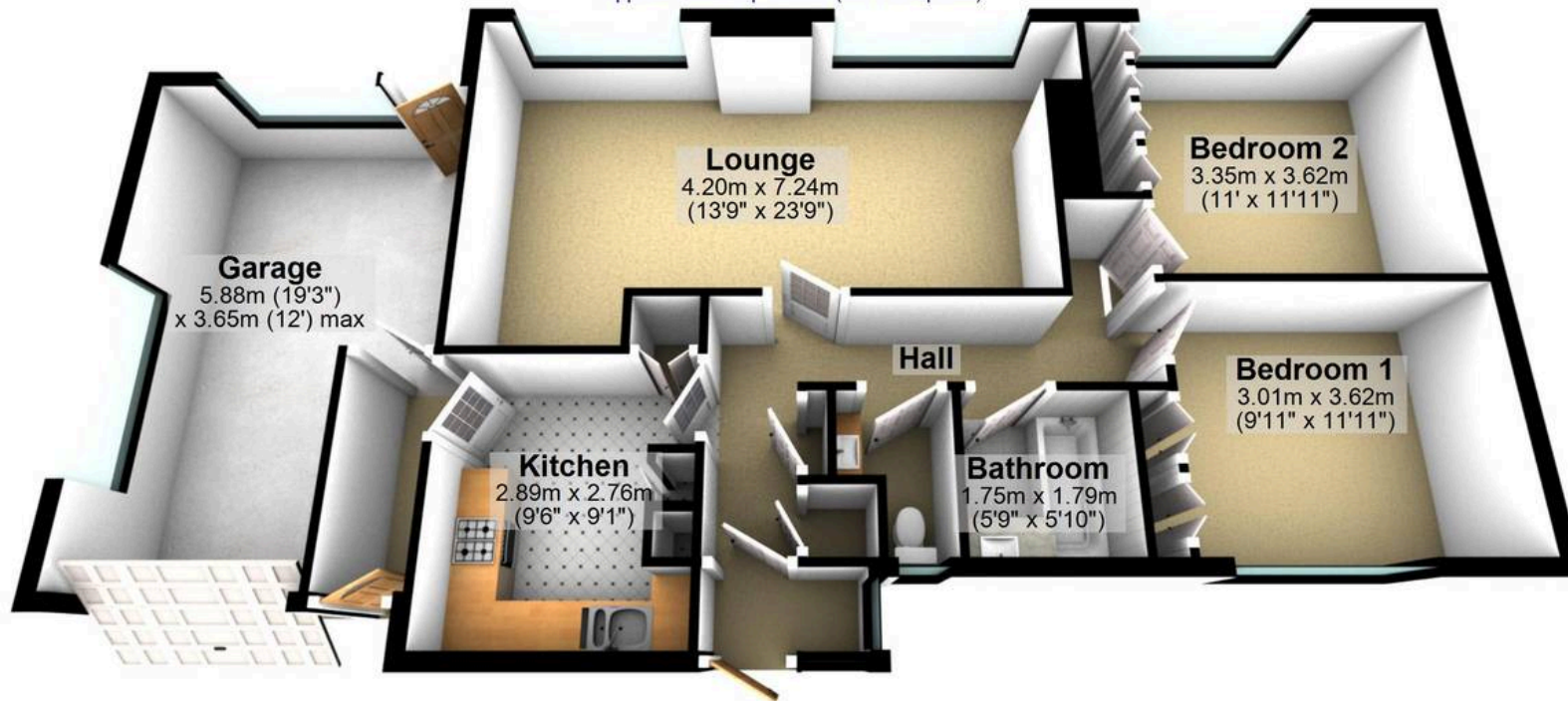
Basement

Approx. 21.8 sq. metres (234.5 sq. feet)



Ground Floor

Approx. 100.0 sq. metres (1076.3 sq. feet)



Total area: approx. 121.8 sq. metres (1310.8 sq. feet)

All measurements are approximate
Plan produced using PlanUp.