

32 Broomgrove Road, Botanical Gardens

Sheffield

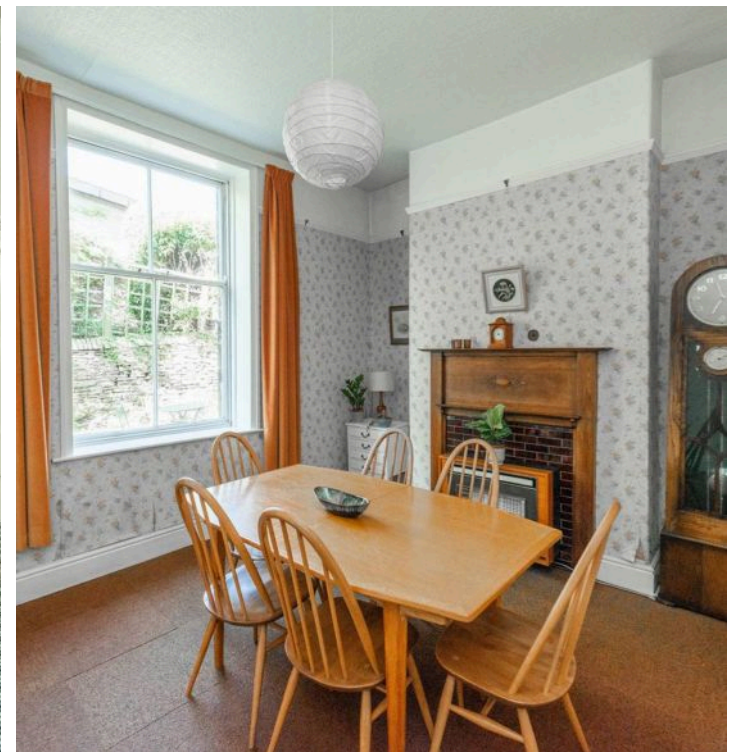
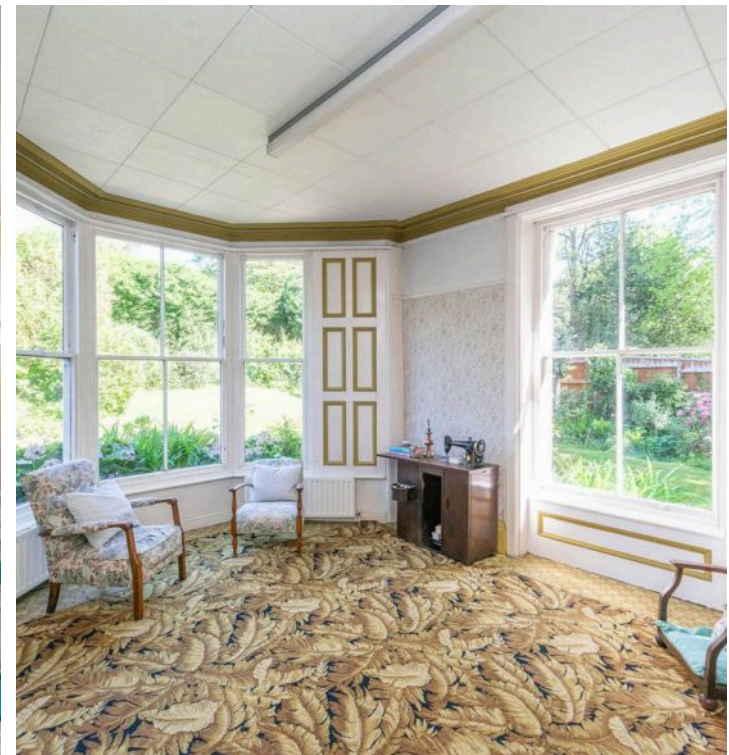
Guide Price £725,000 - £750,000

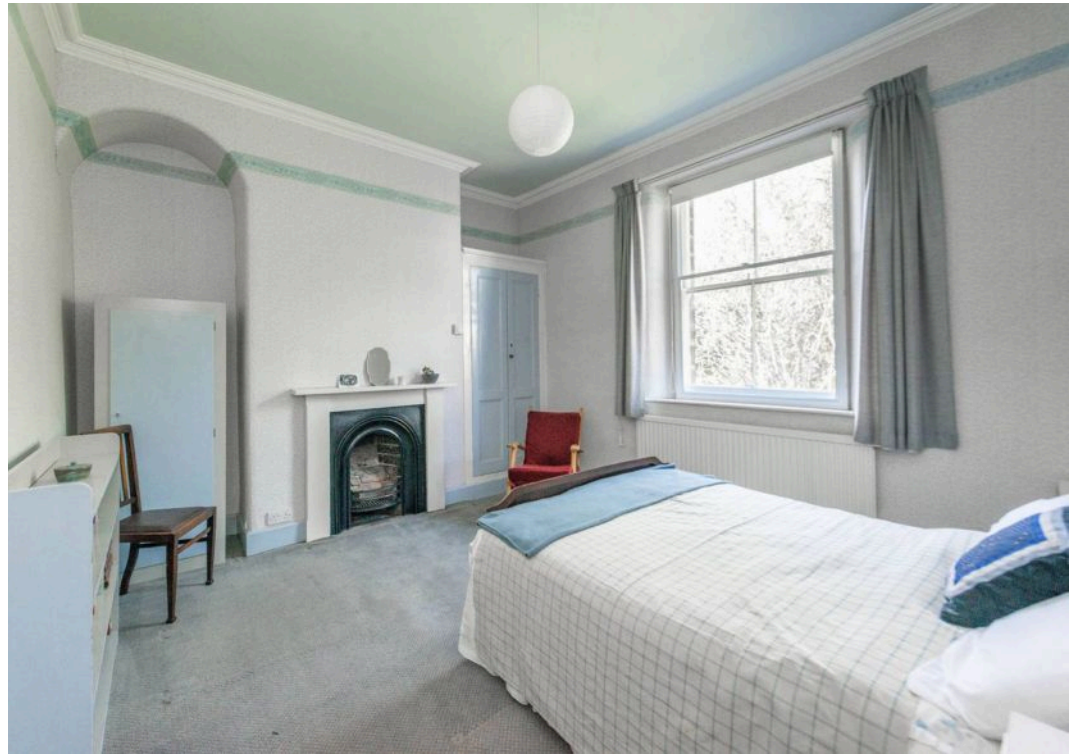
32 Broomgrove Road

Botanical Gardens, Sheffield

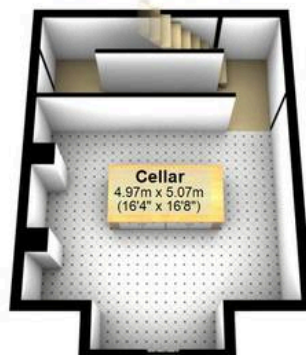
A once in a lifetime opportunity has arisen to purchase this stunning, eight bedroom, double fronted, stone built, period Victorian family residence. Standing in the large plot and accessed via a secure gate that ensures privacy. The property comes with an ample driveway and double attached carport together with a rear private sunny garden. Built in a period where craftsmanship, attention to detail and finish were at the forefront, this sensational home offers an incredibly rare opportunity to market and will be perfect for the growing family market looking to create and personalise a forever family home. With three incredibly light and spacious floors of accommodation that total a staggering 2,936 sq feet along with vast potential to fully convert the existing lower ground floor if required. Council Tax band: F Tenure: Leasehold

- EIGHT BEDROOM STONE BUILT DOUBLE FRONTED VICTORIAN FAMILY RESIDENCE
- ONCE IN A LIFETIME OPPORTUNITY TO PURCHASE WITH VIEWING A PREREQUISITE AND NO UPWARD CHAIN
- PRIVATE GATED DRIVEWAY DOUBLE ATTACHED GARAGE AND REAR SUNNY ENCLOSED GARDEN
- ICONIC SHEFFIELD RESIDENTIAL ADDRESS IN THE VERY HEART OF ULTRA POPULAR BOTANICAL GARDENS
- EXCELLENT SCHOOLING CATCHMENTS AVAILABLE INCLUDING TAPTON AND KING EDWARDS SECONDARY
- THREE FABULOUS FLOORS OF ACCOMMODATION TOTALLING AN IMPRESSIVE 2,936 SQ FEET
- HUGE POTENTIAL TO CREATE A FOREVER PERSONALISED FAMILY HOME TO THE NEW BUYERS TASTE AND STYLE

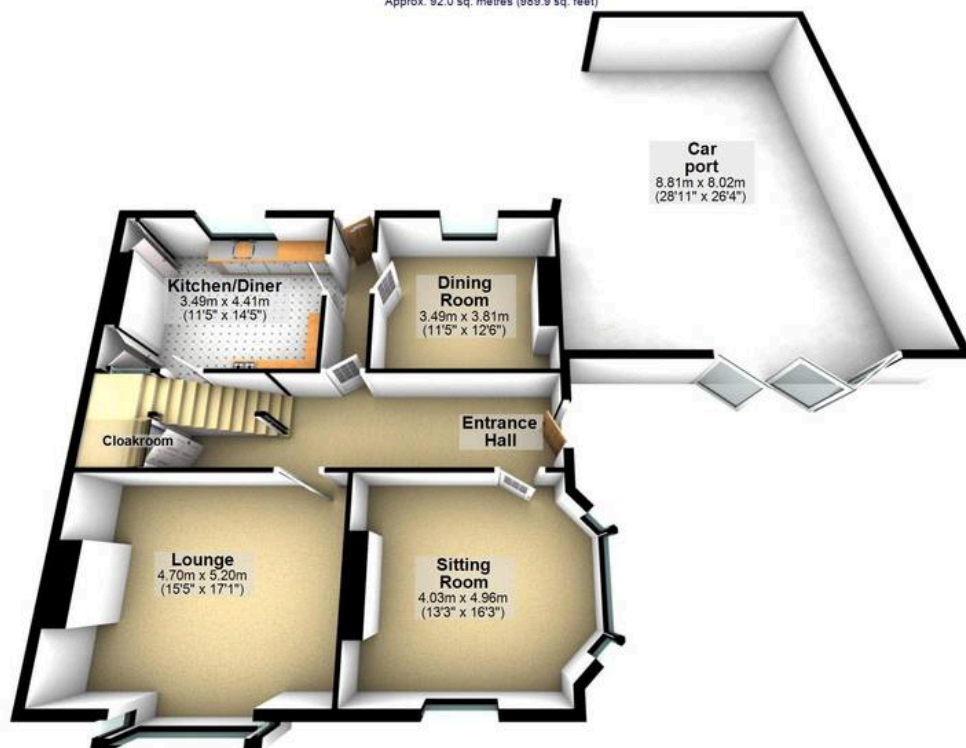




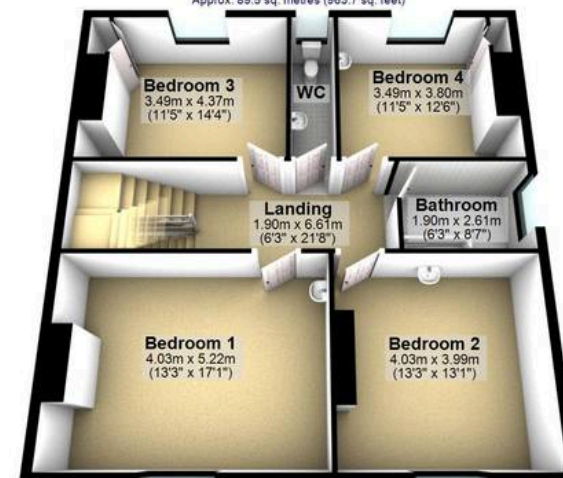
Cellar
Approx. 32.5 sq. metres (350.1 sq. feet)



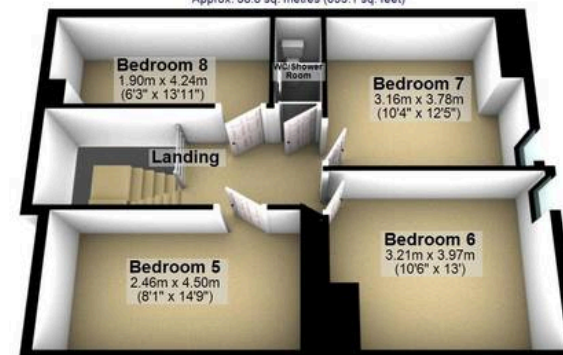
Ground Floor
Approx. 92.0 sq. metres (989.9 sq. feet)



First Floor
Approx. 89.5 sq. metres (963.7 sq. feet)



Second Floor
Approx. 58.8 sq. metres (633.1 sq. feet)



Total area: approx. 272.8 sq. metres (2936.8 sq. feet)

All measurements are approximate
Plan produced using PlanUp.