



WHITEHORSES
Buy. Sell. Let. Relax!
0114 268 8533
info@whitehorses.com
www.whitehorses.com

134 Hangingwater Road, Nether Green

Sheffield

Guide Price £500,000 - £525,000

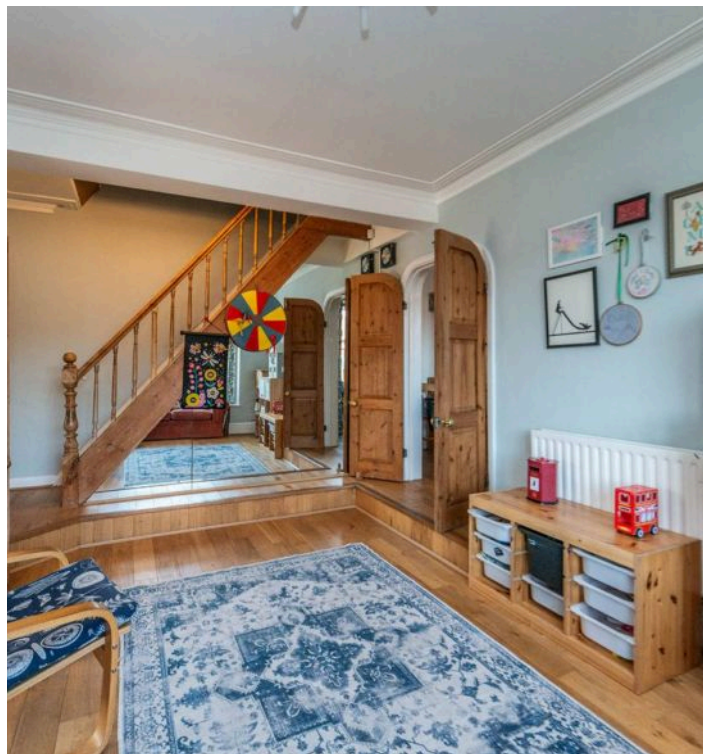
134 Hangingwater Road

Nether Green, Sheffield

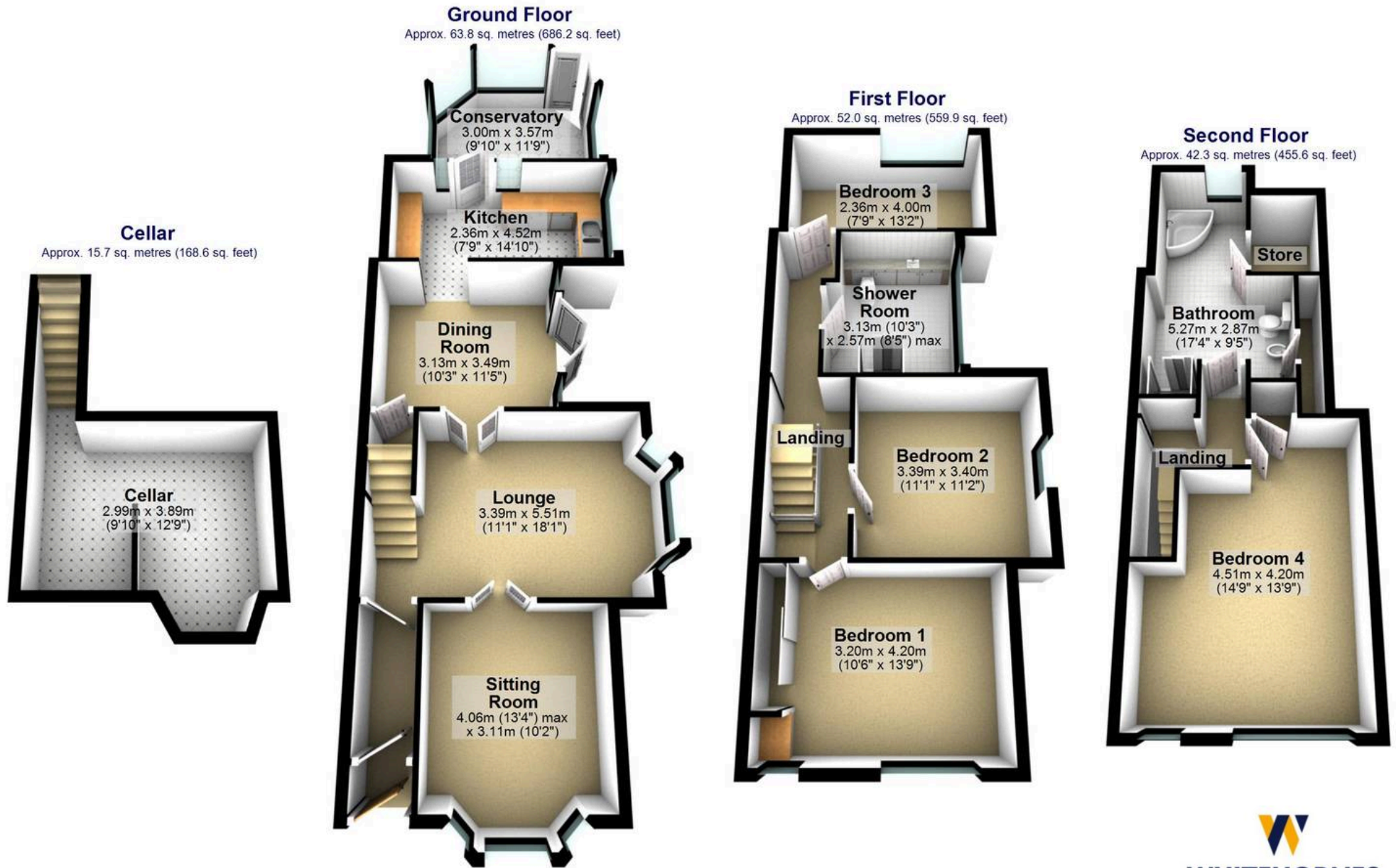
An incredibly rare opportunity has arisen to purchase this quite outstanding, four double bedroom, two bathroom, period end of terrace. Swiss Cottage stands in this commanding, slightly elevated position, that ensures a huge degree of privacy together with some outstanding views to the front. Offering up four reception rooms of which two enjoy bay windows to the ground floor and with three super spacious and deceptive floors of accommodation that total a jaw dropping 1,870 sq feet. Perfectly suited to the growing family market the property benefits from an incredibly private garden, easy on road parking can be found on Bramwith Road whilst the master bedroom is located on the top floor with an impressive full ensuite bathroom and the best views in the property. Located on this incredibly popular residential road within the very heart of ultra popular Nether Green, close to numerous local amenities.

Council Tax band: D Tenure: Leasehold

- STUNNING FOUR DOUBLE BEDROOM TWO BATHROOM PERIOD END OF TERRACE
- THREE INCREDIBLE FLOORS OF ACCOMMODATION TOTALLING AN IMPRESSIVE 1,870 SQ FEET
- INCREDIBLY DECEPTIVE FROM THE FRONT WITH VIEWING ABSOLUTELY ESSENTIAL TO DO FULL JUSTICE
- ELEVATED CORNER POSITION ENSURING PRIVACY TOGETHER WITH SOME TRULY AMAZING VIEWS
- EXCELLENT SCHOOLING CATCHMENTS INCLUDING NETHER GREEN JUNIOR AND HIGH STORRS SECONDARY







Total area: approx. 173.8 sq. metres (1870.3 sq. feet)

All measurements are approximate
Plan produced using PlanUp.


WHITEHORNES
Buy. Sell. Let. Relax!

0114 268 8533
info@whitehornes.com
www.whitehornes.com