



78 Ivy Park Road, Sheffield
Sheffield

Offers in Region of £1,950,000

78 Ivy Park Road

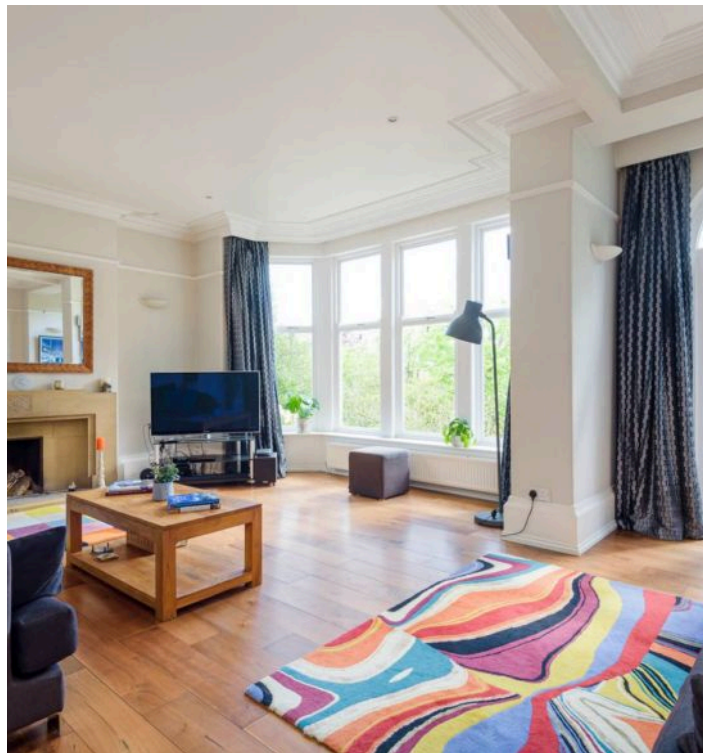
Sheffield, Sheffield

A once in a lifetime opportunity has arisen to purchase this truly spectacular, seven bedroomed, three bathroomed, double fronted, stone built, detached family residence. Enjoying three sensational floors of accommodation that total an impressive 4,700 sq feet.

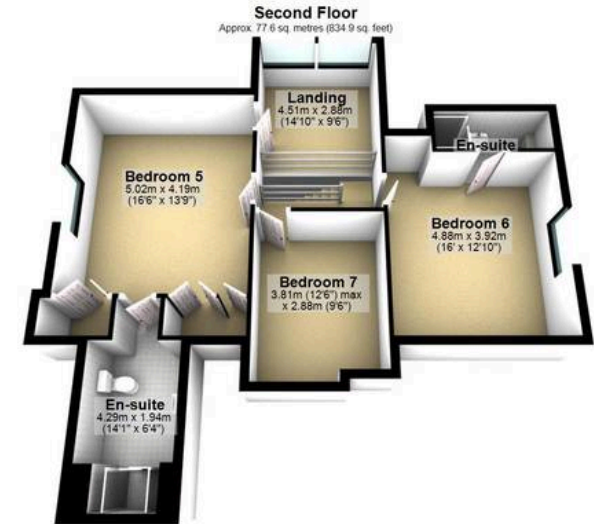
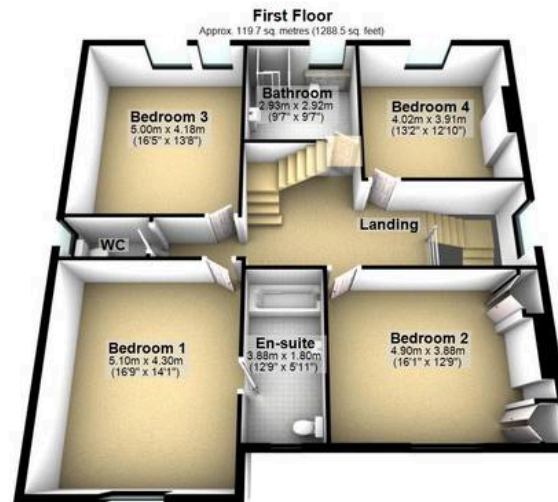
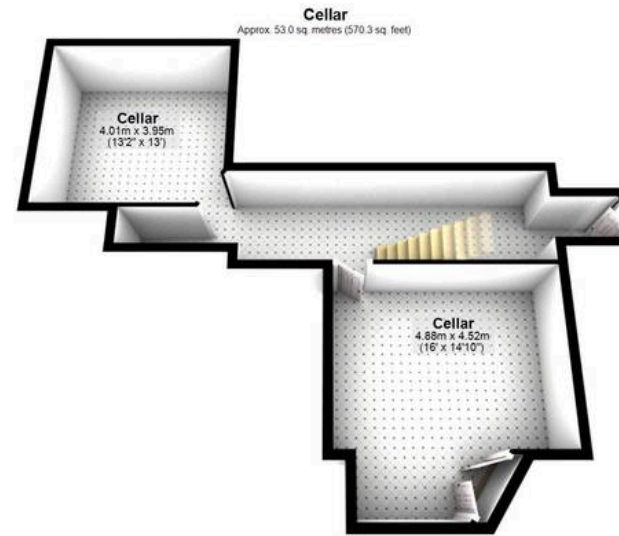
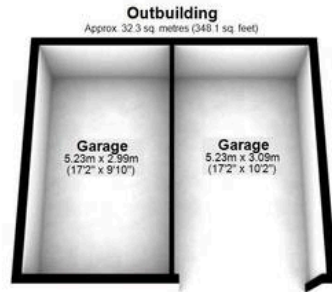
Council Tax band: G

Tenure: Freehold

- ONCE IN A LIFE TIME OPPORTUNITY TO PURCHASE
- SEVEN BEDROOMED STONE BUILT DETACHED RESIDENCE
- THREE INCREDIBLE FLOORS OF ACCOMMODATION TOTALLING 4,698 SQ FT
- INCREDIBLE REAR OPEN PLAN BESPOKE FITTED LIVING, DINING KITCHEN
- ORIGINAL PERIOD FEATURES MATCHED WITH A MODERN FINISH
- FINISHED INTERNALLY TO AN EXCEPTIONALLY HIGH STANDARD WITH NO EXPENSE SPARED
- HEART OF ULTRA POPULAR RANMOOR ON ONE OF SHEFFIELDS MOST PRESTIGIOUS ROADS
- OFSTED RATED EXCELLENT STATE AND PRIVATE SCHOOLS AVAILABLE
- PRINCIPAL HOSPITALS AND UNIVERSITIES WITHIN EASY REACH
- AWARD WINNING ARCHITECT DESIGNED LANDSCAPED REAR GARDEN







Total area: approx. 436.5 sq. metres (4698.6 sq. feet)

All measurements are approximate
Plan produced using PlanUp.