



WHITEHORNES

Buy. Sell. Let. Relax!

0114 268 8533
info@whitehorses.com
www.whitehorses.com

32 Annesley Road, Greenhill

Sheffield

Guide Price **£240,000**

32 Annesley Road

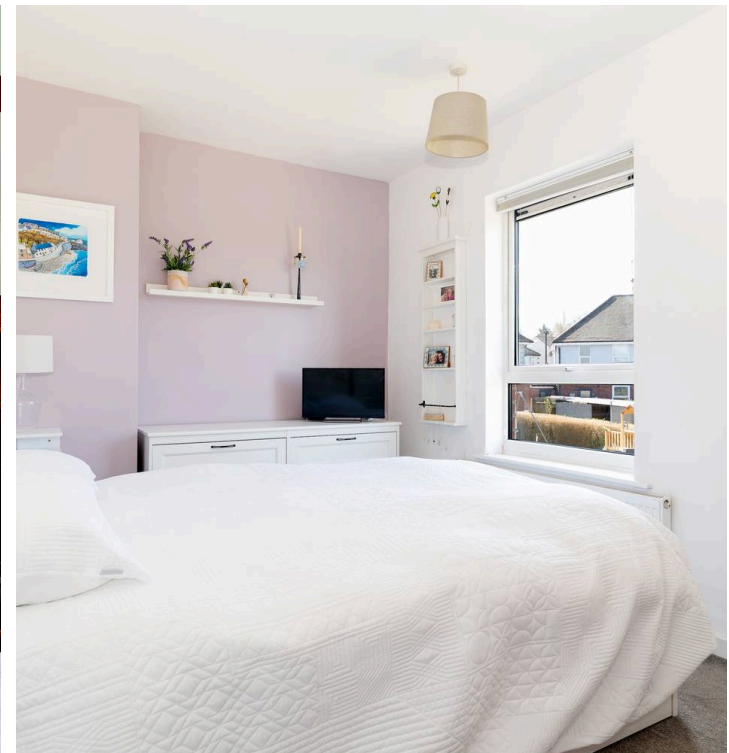
Greenhill, Sheffield

Perfect for first time buyers and families alike is this stylish and modern two bed roomed semi-detached house. Sitting in the heart of the popular residential suburb of Greenhill this property has easy access, not only to a wealth of local amenities including Heeley Retail Park but also reputable local schools such as Greenhill Primary School and Meadow head Secondary School. Not to forget, the ultra popular Graves Park is a short stroll away making it the perfect location for young families. Also benefitting from off road parking via the ample driveway and a fantastic, large family friendly garden along with a summerhouse it's easy to say that this property is the ideal home for any buyer. Briefly consisting of entrance hallway, dual aspect lounge, kitchen, two bedrooms and family bathroom. This leasehold property falls under Council Tax Band A.

Council Tax band: A

Tenure: Freehold

- TWO BEDROOMED SEMI DETACHED HOUSE
- SITUATED IN THE HEART OF WELL SOUGHT AFTER GREENHILL WITH GREENHILL VILLAGE AMENITIES A SHORT STROLL AWAY
- IDEAL FOR YOUNG FAMILIES OR PROFESSIONAL COUPLES ALIKE
- GREAT SCHOOLING CATCHMENTS INCLUDING GREENHILL PRIMARY SCHOOL AND MEADOWHEAD SCHOOL
- ULTRA POPULAR GRAVES PARK ON THE DOORSTEP
- SUPERB ENCLOSED REAR GARDEN AND SUMMER HOUSE
- EASY AND CONVENIENT OFF-ROAD PARKING VIA THE DRIVEWAY
- BENEFITTING FROM A NEW ROOF 8 YEARS AGO AND





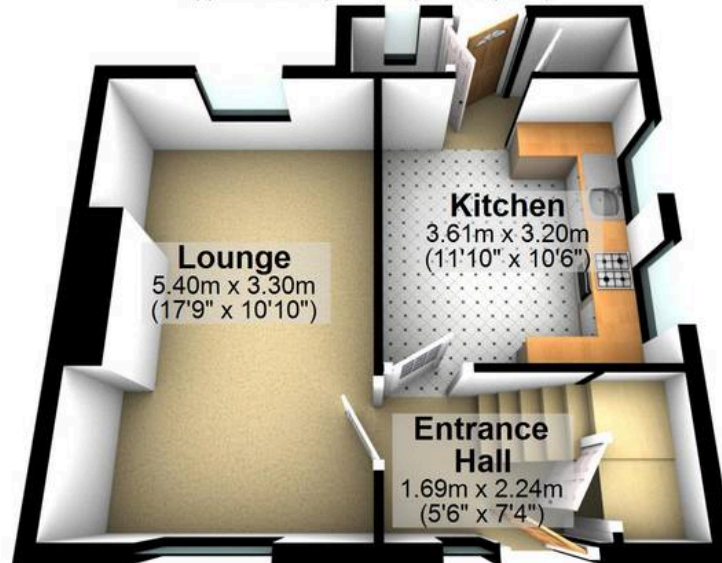
Garage

Approx. 17.6 sq. metres (189.0 sq. feet)



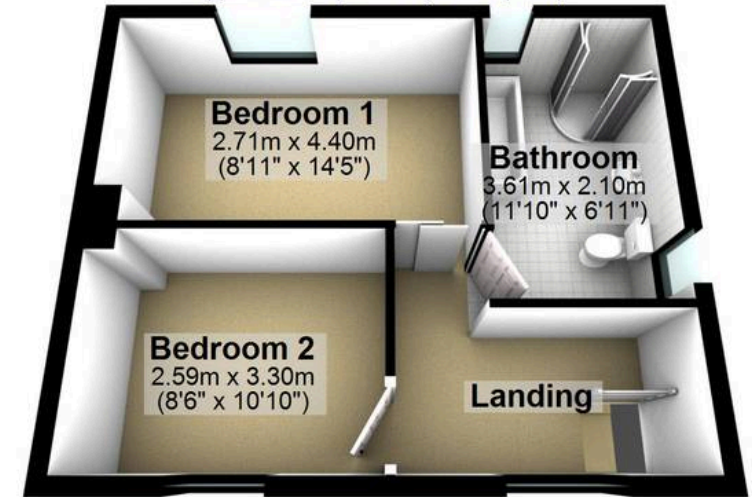
Ground Floor

Approx. 39.0 sq. metres (420.0 sq. feet)



First Floor

Approx. 35.6 sq. metres (383.7 sq. feet)



Total area: approx. 92.2 sq. metres (992.7 sq. feet)

All measurements are approximate
Plan produced using PlanUp.