



WHITEHORSES

Buy. Sell. Let. Relax!

0114 268 8533
info@whitehorses.com
www.whitehorses.com

2 Beldon Court, Norfolk Park

Sheffield

In Excess of **£105,000**

2 Beldon Court

Norfolk Park, Sheffield

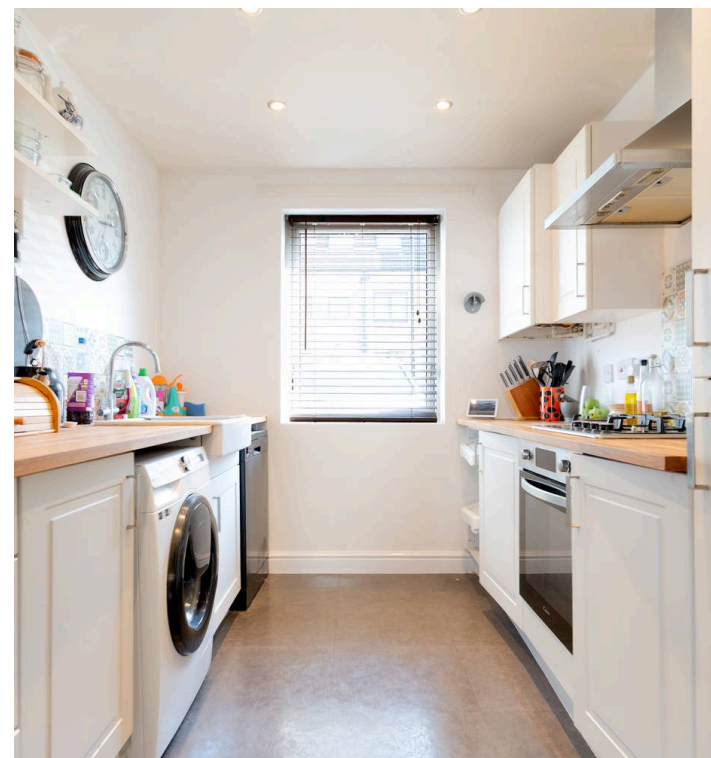
Nestled on this quiet, no through residential road in Norfolk Park and having been newly built within the last 16 years, is this superb two bedroomed end of terrace house. This property boasts 836 sq ft of light, bright and spacious accommodation. Number 2 briefly consists of a kitchen, open lounge/diner, downstairs w/c, to the upstairs is two double bedrooms and a family bathroom. Along with easy off road parking via the driveway and a fantastic family friendly, enclosed rear garden. Benefitting from local schools including Norfolk Park Community Primary School and All Saints Catholic High School as well as a short stroll to popular green spaces including Norfolk Park making it the perfect location for first time buyers and young families alike.

Viewing is essential to fully appreciate this truly deceptive home.

Council Tax band: A

Tenure: Leasehold

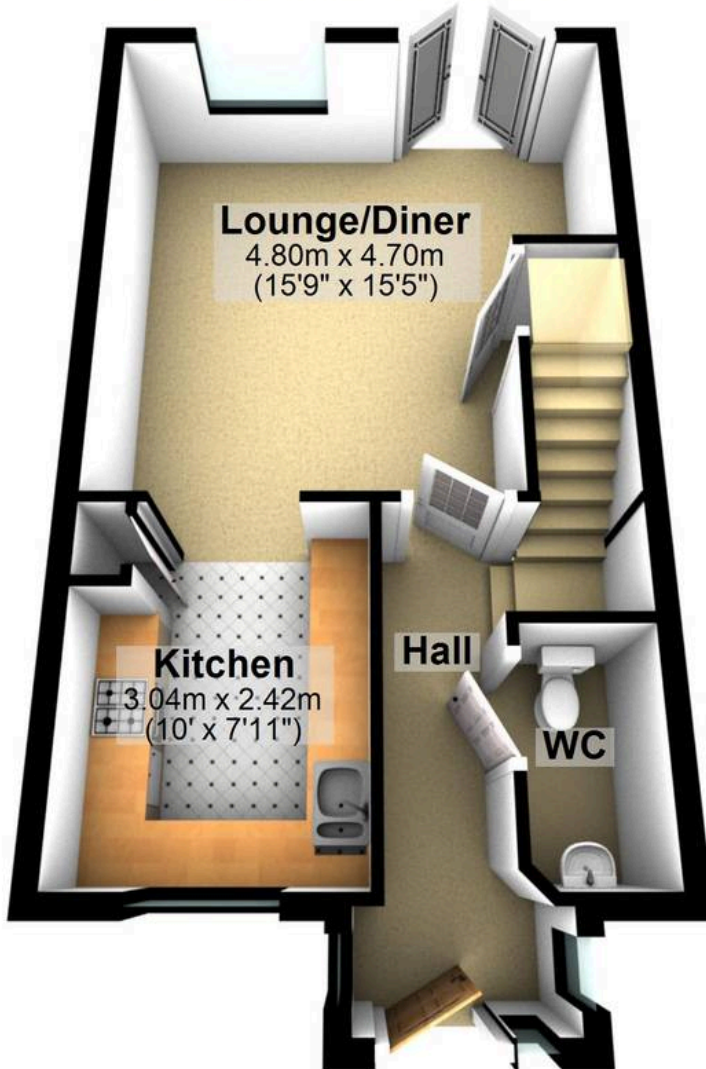
- TWO BEDROOMED END OF TERRACE HOUSE
- LOCATED IN THE HEART OF POPULAR SUBURB OF NORFOLK PARK
- PERFECT FOR FIRST TIME BUYERS OR INVESTORS
- LOCAL SCHOOLING CATCHMENTS INCLUDING NORFOLK PARK COMMUNITY PRIMARY SCHOOL AND ALL SAINTS CATHOLIC HIGH SCHOOL
- PRIVATE REAR FAMILY FRIENDLY GARDEN AND PATIO
- SITUATED ON THIS QUIET NO-THROUGH RESIDENTIAL ROAD
- SHORT STROLL TO GREEN SPACES INCLUDING FANTASTIC NORFOLK PARK
- LIGHT AND BRIGHT LIVING SPACE TOTALLING 861 SQ FT
- AMPLE DRIVEWAY PROVIDING OFF STREET PARKING





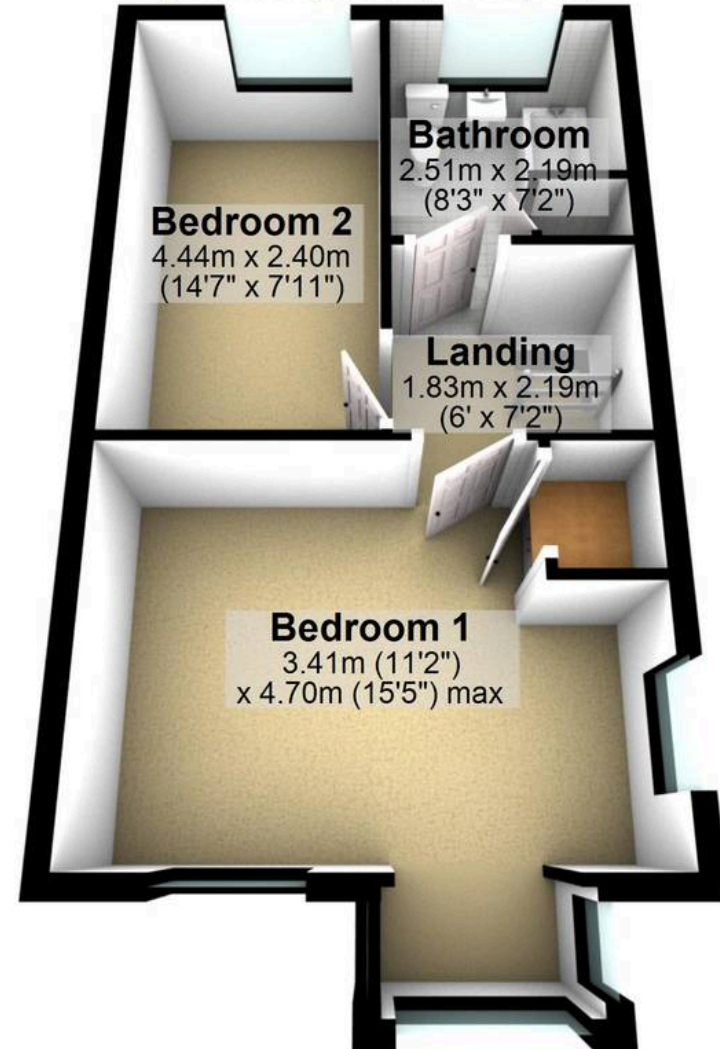
Ground Floor

Approx. 38.9 sq. metres (418.3 sq. feet)



First Floor

Approx. 38.8 sq. metres (417.8 sq. feet)



Total area: approx. 77.7 sq. metres (836.1 sq. feet)

All measurements are approximate
Plan produced using PlanUp.