



WHITEHORSES

Buy. Sell. Let. Relax!

0114 268 8533
info@whitehorses.com
www.whitehorses.com



15 Cobnar Road, Abbey Lane

Sheffield

Guide Price £350,000 - £360,000

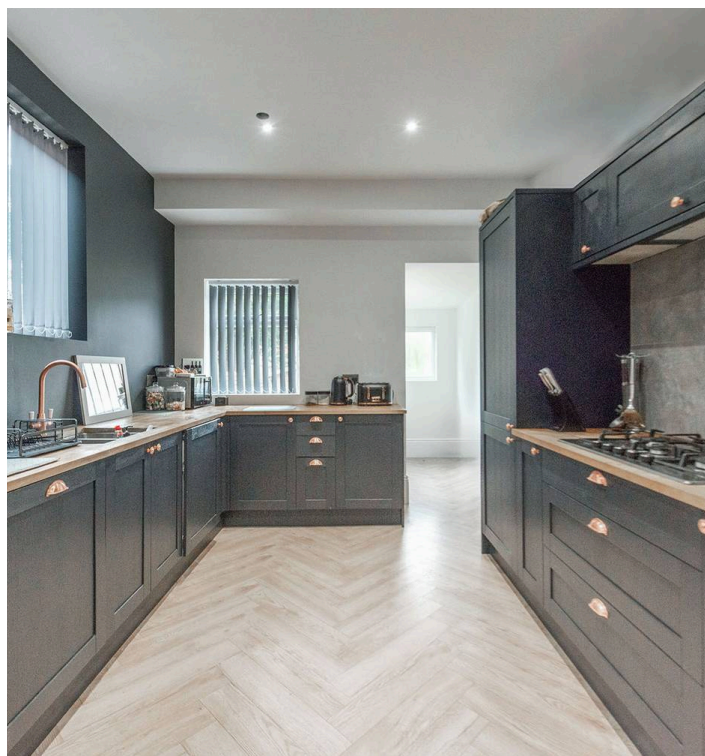
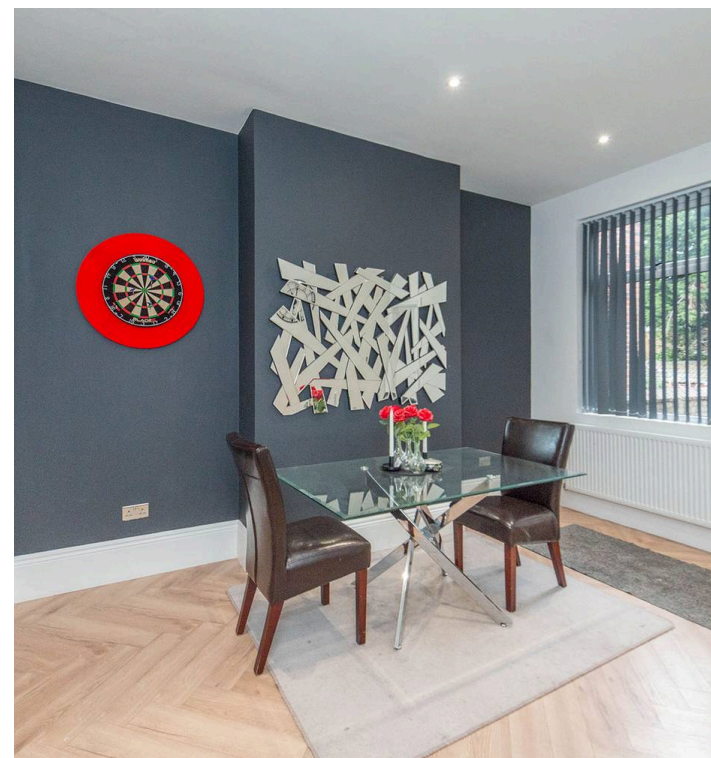
15 Cobnar Road

Abbey Lane, Sheffield

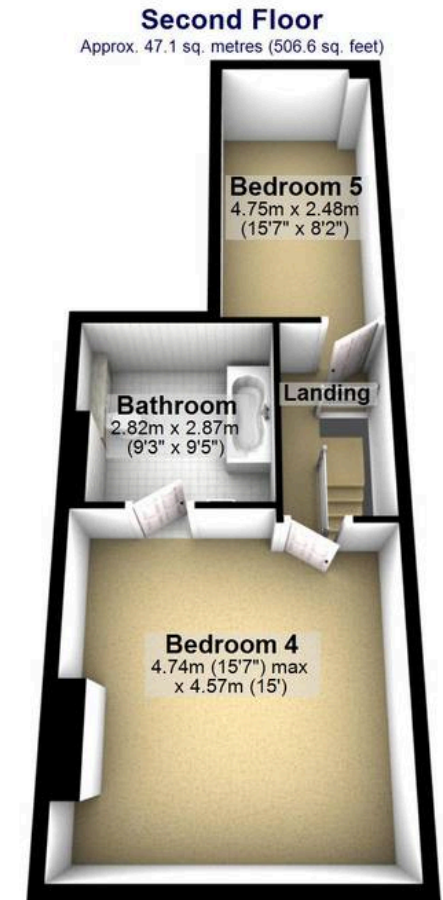
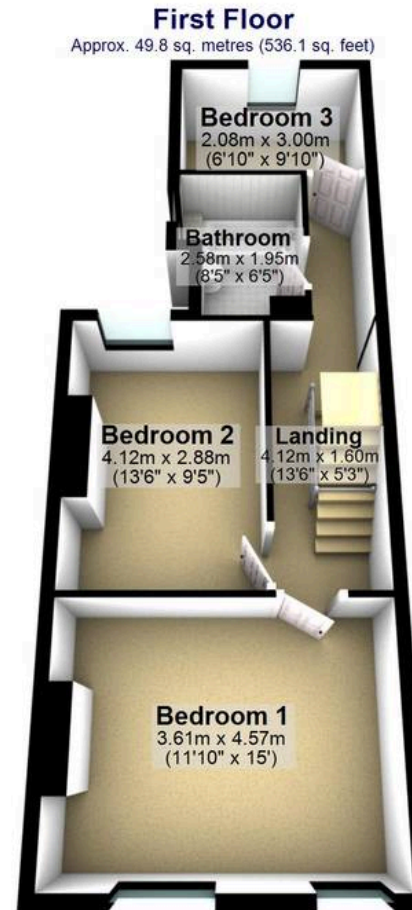
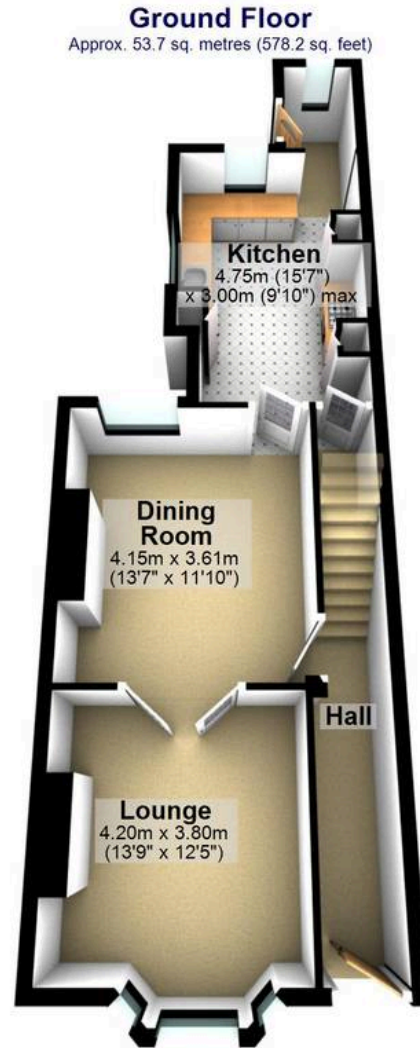
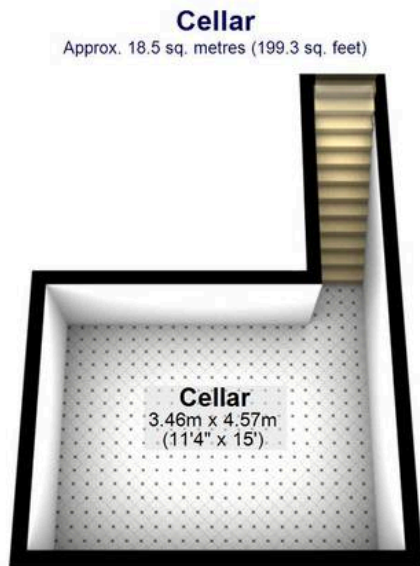
An absolutely stunning, immaculately presented and very deceptive five bedroom, two bathroom, Victorian, bay window, Villa terrace property. Finished internally to a super high standard throughout with no expense spared by the current vendors to create this wonderful, contemporary finish that is sure to be a hit with both the growing family market and the professional couple alike. With three incredible floors of accommodation that total an impressive 1,820 sq feet, framed by an impressive, loft master bedroom that benefits from a sumptuous en-suite bathroom while the ground floor flows with a through living/dining room and fabulous fitted modern kitchen. Enjoying the huge added addition of off road parking to the front and a private rear flat sunny garden that has no through fare from neighbouring properties, it's easy to say that viewing is absolutely essential to fully appreciate the size and style on offer.

Council Tax band: B Tenure: Leasehold

- SUBSTANTIAL FIVE BEDROOM TWO BATHROOM PERIOD BAY WINDOW TERRACED PROPERTY
- HUGE BENEFIT OF OFF ROAD PARKING TO THE FRONT AND PRIVATE REAR GARDEN
- FINISHED INTERNALLY TO A SUPER HIGH STANDARD BY THE CURRENT VENDORS WITH NO EXPENSE SPARED
- HEART OF ULTRA POPULAR ABBEY LANE WITH GRAVES PARK ACROSS THE ROAD
- THREE FLOORS OF ACCOMMODATION TOTALLING AN IMPRESSIVE 1,820 SQ FEET
- PERFECT FOR THE GROWING FAMILY MARKET OR PROFESSIONAL COUPLE
- WELL SOUGHT AFTER RESIDENTIAL ROAD CLOSE TO NUMEROUS AMENITIES WITHIN WOODCREATS







Total area: approx. 169.1 sq. metres (1820.2 sq. feet)

All measurements are approximate
Plan produced using PlanUp.



WHITEHORNES

Buy. Sell. Let. Relax!

0114 268 8533
info@whitehornes.com
www.whitehornes.com