



78 Ivy Park Road, Sheffield  
Sheffield

Offers in Region of £1,950,000

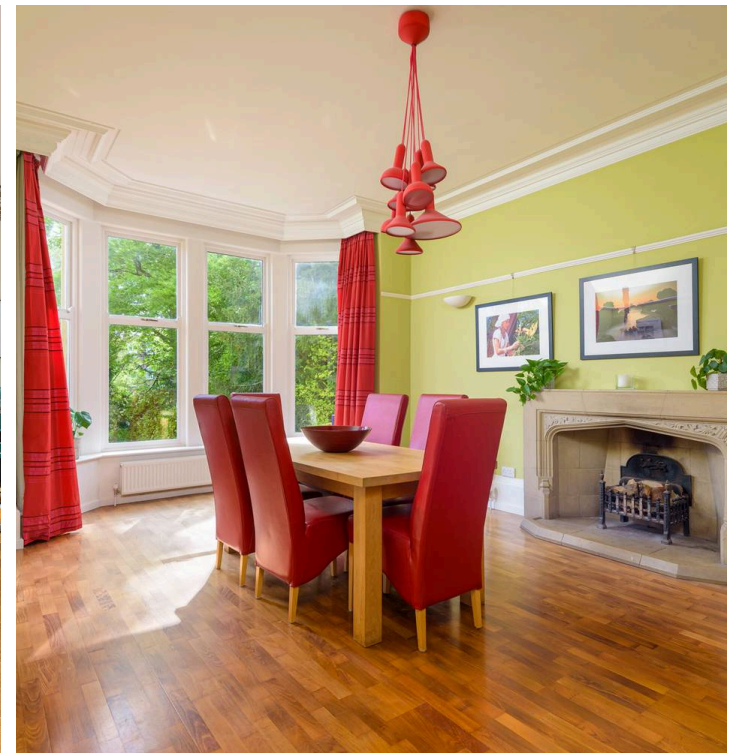


# 78 Ivy Park Road

Sheffield, Sheffield

A once in a lifetime opportunity has arisen to purchase this truly spectacular, seven bedrooomed, four bathroomed, double fronted, stone built, detached family residence. Enjoying three sensational floors of accommodation that total an impressive 4,700 sq feet that framed by a bespoke hand fitted living, dining kitchen to the rear. Having been careful to retain the original period character and charm associated with a property from this era the current vendors have created a contemporary finish that will be pitch perfect for the growing family market and simply must be viewed internally to be fully appreciated. Located on unquestionably one of Sheffield's finest residential roads within the heart of Ranmoor this beautiful property is set back from the road and falls within catchment for both Ofsted rated excellent state and private schools, principal hospitals and universities are close by as are numerous local amenities and of course not forgetting The Peak District is on the doorstep. Council Tax band: G Tenure: Freehold

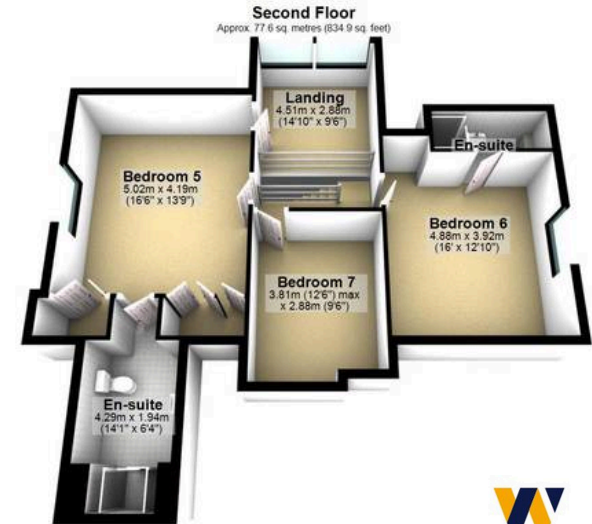
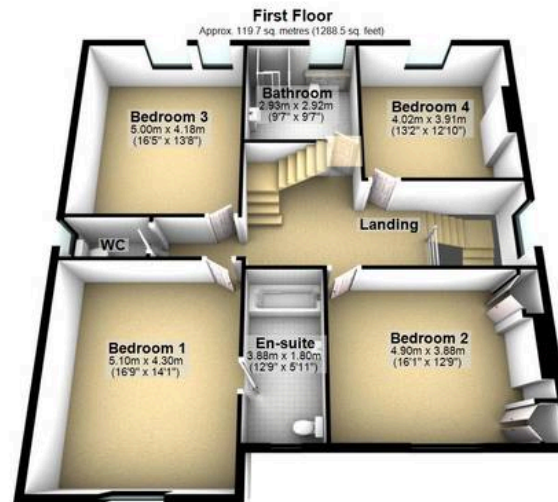
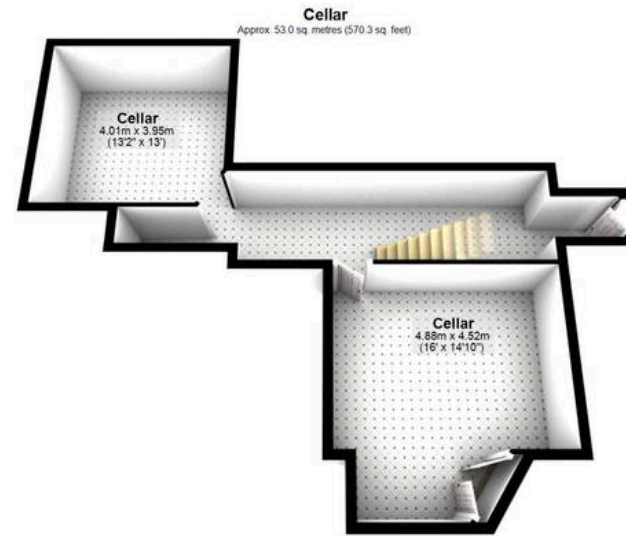
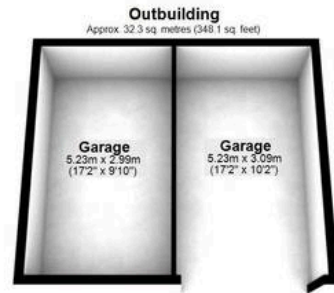
- ONCE IN A LIFE TIME OPPORTUNITY TO PURCHASE
- SEVEN BEDROOMED STONE BUILT DETACHED RESIDENCE
- THREE INCREDIBLE FLOORS OF ACCOMMODATION TOTALLING 4,698 SQ FT
- INCREDIBLE REAR OPEN PLAN BESPOKE FITTED LIVING, DINING KITCHEN
- ORIGINAL PERIOD FEATURES MATCHED WITH A MODERN FINISH
- FINISHED INTERNALLY TO AN EXCEPTIONALLY HIGH STANDARD WITH NO EXPENSE SPARED
- HEART OF ULTRA POPULAR RANMOOR ON ONE OF SHEFFIELDS MOST PRESTIGIOUS ROADS
- OFSTED RATED EXCELLENT STATE AND PRIVATE











Total area: approx. 436.5 sq. metres (4698.6 sq. feet)

All measurements are approximate  
Plan produced using PlanUp.

  
**WHITEHORNES**  
Buy. Sell. Let. Relax!

0114 268 8533  
info@whitehorses.com  
www.whitehorses.com