



WHITEHORNS
Buy. Sell. Let. Relax!
0114 268 8533
info@whitehorns.com
www.whitehorns.com

56 Charnley Avenue, Carter Knowle

Sheffield

Offers in Region of £330,000

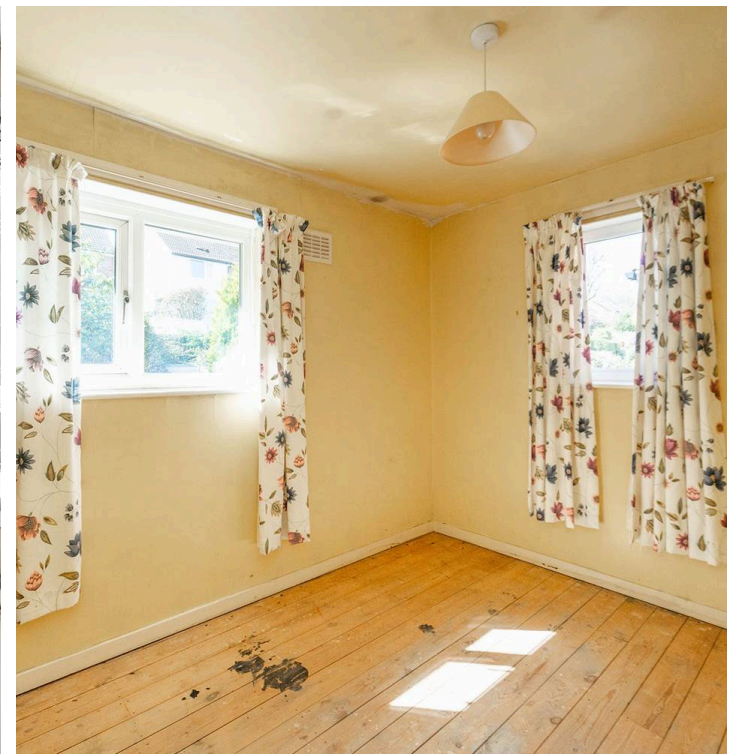
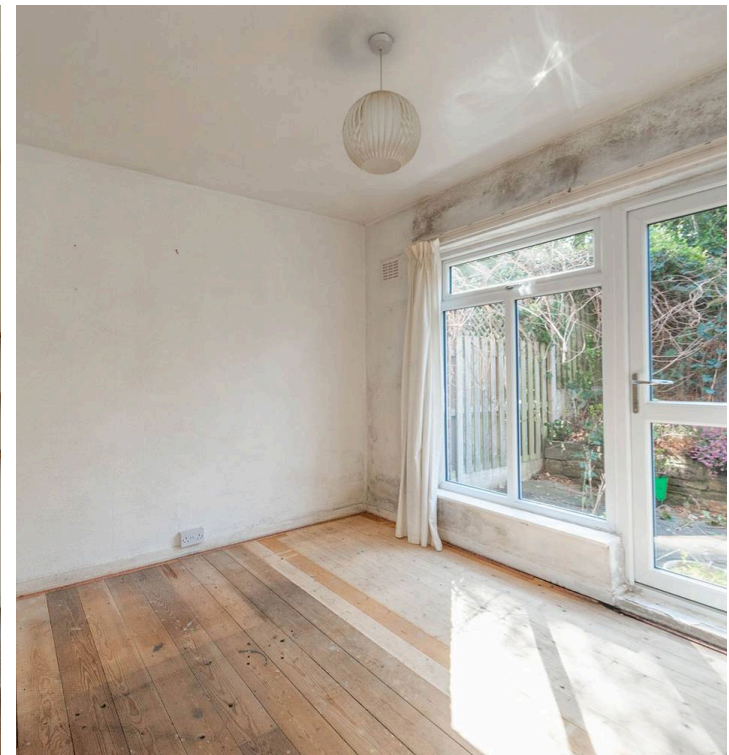
56 Charnley Avenue

Carter Knowle, Sheffield

Nestled in the heart of the ultra-popular Bannerdale in the sought-after S11 postcode, this three-bedroomed semi-detached family home presents a rare opportunity for those seeking an excellent schooling catchment and a vibrant community atmosphere. This charming property is just a short stroll away from Banner Cross shops and amenities, ensuring convenience. The home falls within the catchment area of OFSTED-rated excellent schools including Greystones Juniors, High Storrs, and Mercia Secondary, making it an ideal choice for families seeking quality education options. With over 962 sq ft of spacious and light accommodation spread across two floors, off road parking and wonderful rear private sunny garden, this property offers the perfect canvas for those looking to create their dream family home.

Council Tax band: C Tenure: Freehold

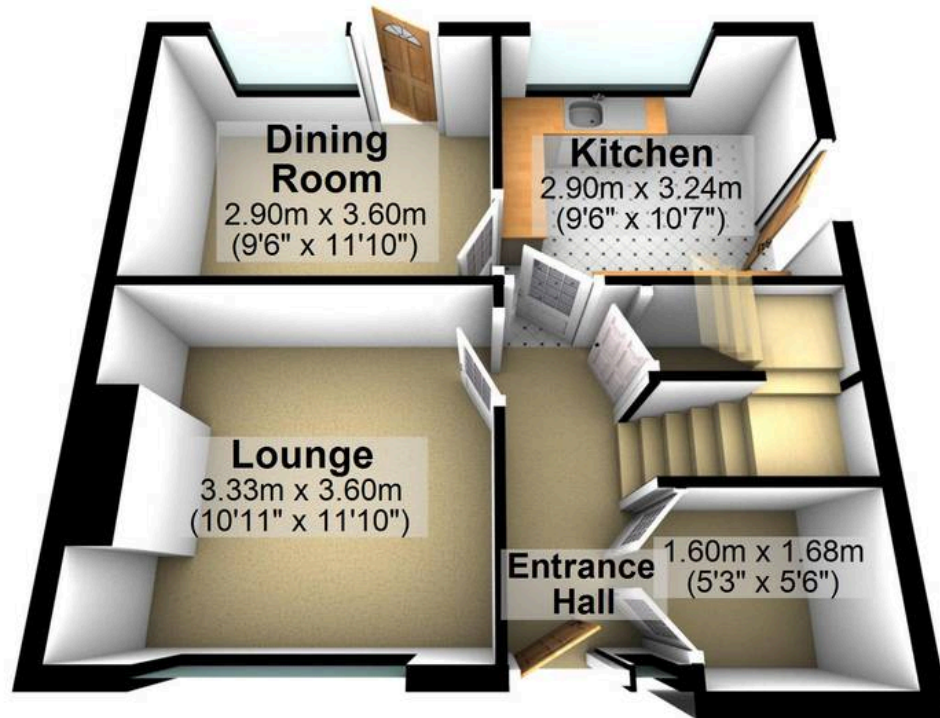
- THREE BEDROOMED SEMI-DETACHED FAMILY HOME
- OFSTED RATED EXCELLENT SCHOOLING CATCHMENTS INCLUDING GREYSTONES JUNIORS HIGH STORRS AND MERCIA SECONDARY
- SHORT STROLL TO BANNER CROSS SHOPS AND AMENITIES
- INCREDIBLY RARE OPPRTUNITY TO MARKET AND VIEWING ADVISED TO SEE THE FULL POTENTIAL ON OFFER
- IN NEED OF A SCHEME OF MODERNISATION BUT OFFERING PLENTY OF SCOPE TO ADD FUTURE VALUE
- HEART OF ULTRA POPULAR BANNERDALE





Ground Floor

Approx. 44.2 sq. metres (476.0 sq. feet)



First Floor

Approx. 45.2 sq. metres (486.9 sq. feet)



Total area: approx. 89.5 sq. metres (962.9 sq. feet)

All measurements are approximate
Plan produced using PlanUp.



WHITEHORSES

Buy. Sell. Let. Relax!

0114 268 8533
info@whitehorses.com
www.whitehorses.com