



WHITEHORNS

Buy. Sell. Let. Relax!

0114 268 8533
info@whitehorns.com
www.whitehorns.com

18 Ranby Road, Endcliffe

Sheffield

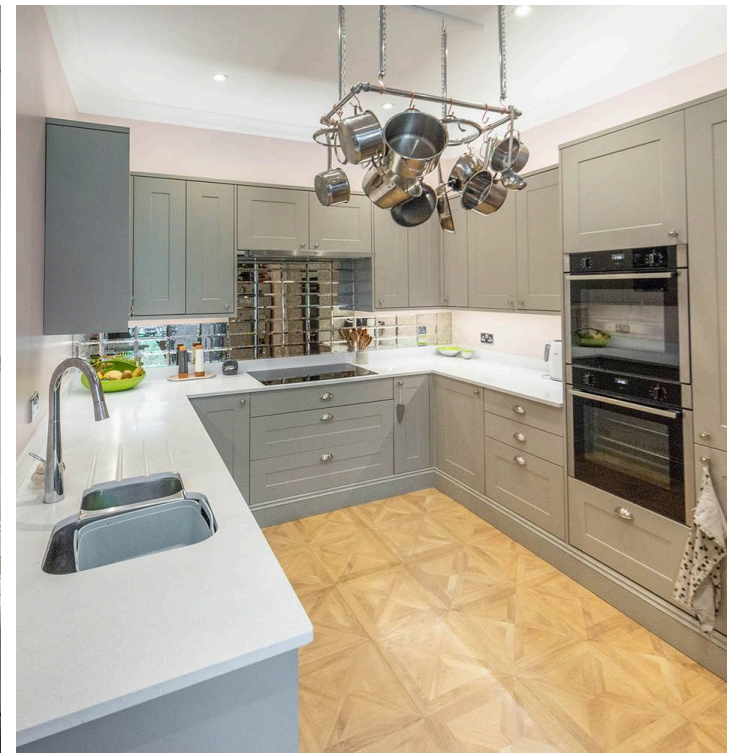
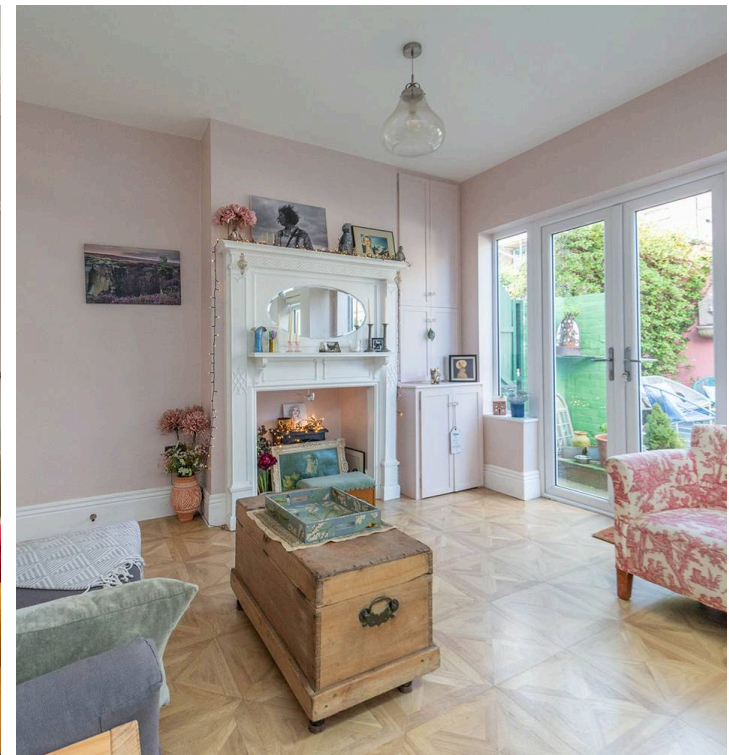
Guide Price £440,000 - £450,000

18 Ranby Road

Endcliffe, Sheffield

Redefining the term, contemporary modern living is this absolutely stunning, immaculately presented and very deceptive, three double bedroom, villa style mid terraced Victorian home. Offering an incredibly rare opportunity to market for a property of this size and caliber in recent years number eighteen offers a truly unique internal layout that flows over two gorgeous floors totaling an impressive 1,220 sq feet. Finished internally to a super high standard throughout by the current vendor to create this contemporary and modern vibe that has been careful to retain the original period features, character and charm associated with a property from this era but effectively managed to blend them in to a superb high end finish with absolutely no expense spared. Council Tax band: C Tenure: Leasehold

- ABSOLUTELY STUNNING EXAMPLE OF A THREE DOUBLE BEDROOM PERIOD VILLA TERRACE
- FINISHED INTERNALLY TO AN EXCEPTIONALLY HIGH STANDARD THROUGHOUT BY THE CURRENT VENDOR WITH ABSOLUTELY NO EXPENSE SPARED
- TASTEFULLY EXTENDED TO THE REAR TO CREATE THIS UNIQUE INTERNAL LAYOUT
- OFFERING THE EPITOME OF CONTEMPORARY OPEN PLAN LIVING TO THE GROUND FLOOR
- EXCELLENT SCHOOL CATCHMENTS INCLUDING BOTH GREYSTONES JUNIORS AND HIGH STORRS SECONDARY
- RETAINING A WEALTH OF THE ORIGINAL PERIOD FEATURES CHARACTER AND CHARM

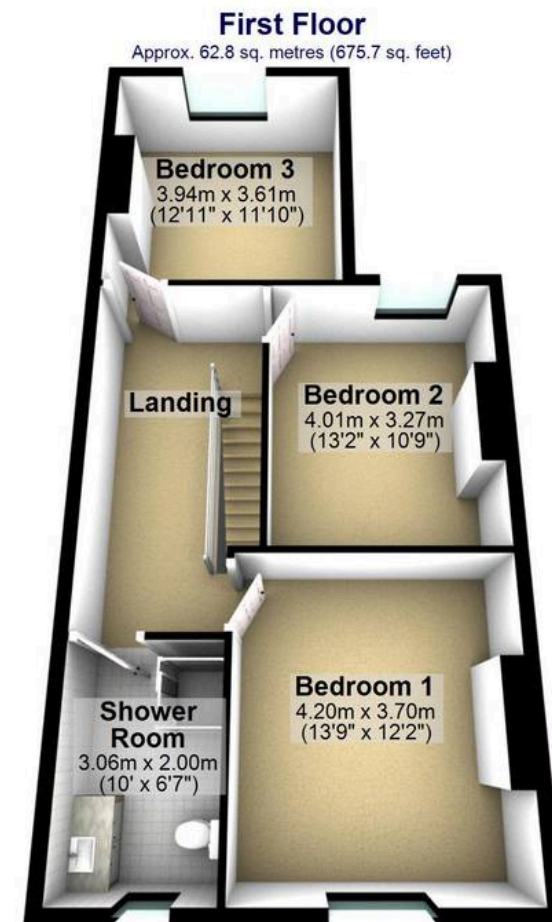
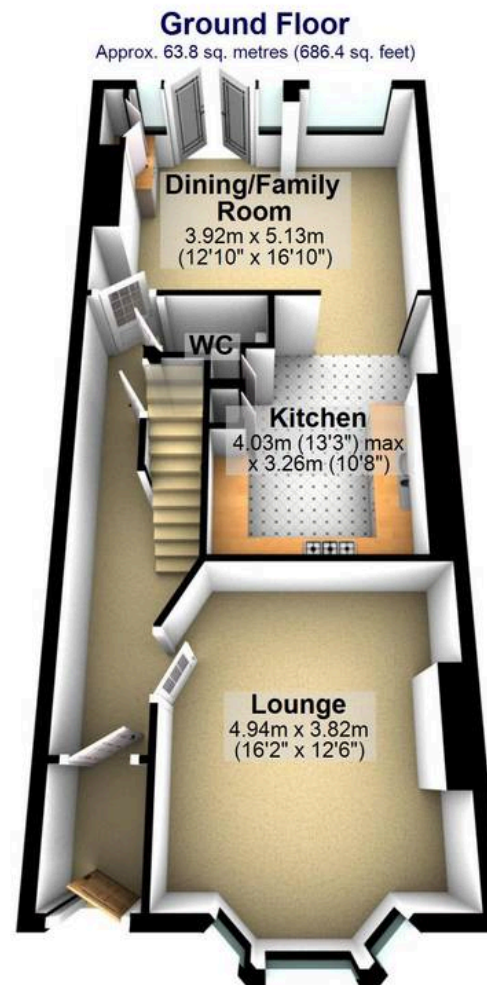
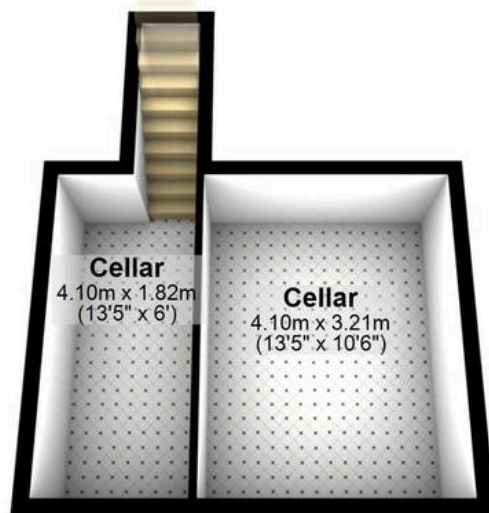




Outbuilding
 Approx. 5.3 sq. metres (57.4 sq. feet)



Cellar
 Approx. 23.0 sq. metres (247.2 sq. feet)



Total area: approx. 154.8 sq. metres (1666.7 sq. feet)

All measurements are approximate
 Plan produced using PlanUp.