



**WHITEHORNES**

Buy. Sell. Let. Relax!

0114 268 8533  
info@whitehorses.com  
www.whitehorses.com

12 Wiseton Road, Botanical Gardens

Sheffield

Offers in Region of £425,000

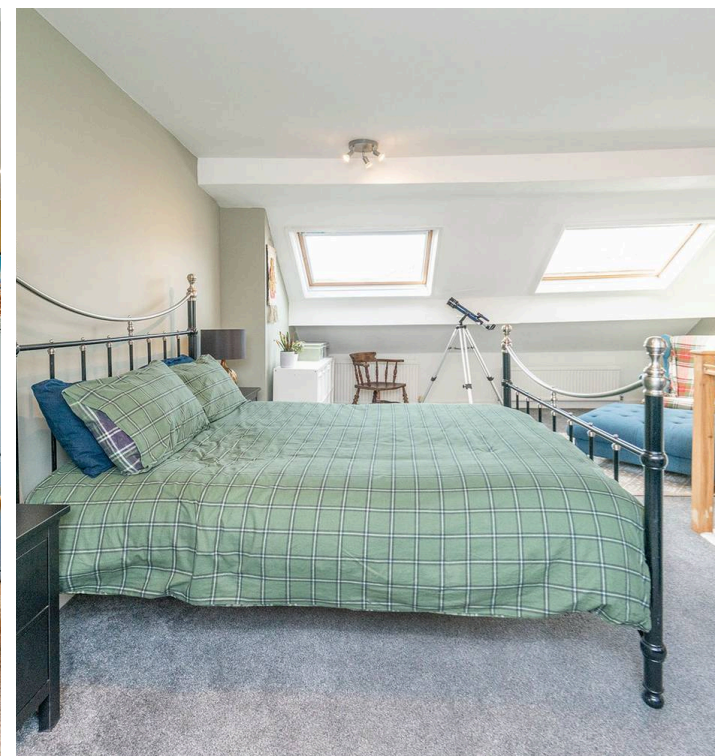
## 12 Wiseton Road

Botanical Gardens, Sheffield

A super cool, immaculately presented and very deceptive, four double bedrooomed, two bathroomed, bay windowed, period Victorian terraced property. Ideally placed in this fashionable suburb of The Botanical Gardens, away from the hustle and bustle yet within a short stroll of buzzing Sharrow Vale with its array of independent cafes, restaurants and shops together with Endcliffe park at the end of the road. Hospitals, universities and central Sheffield are all on hand and Ofsted rated schooling catchments are within easy reach including Hunters Bar Juniors/High Storrs secondary and don't forget The Peak District is right next door. Finished recently to an incredibly high standard by the current vendors, the property retains the original features, character and charm associated with a property from this era and effortlessly blends them with a cool and contemporary modern feel that will appeal hugely to to both the professional couple and young family alike.

Council Tax band: C Tenure: Freehold

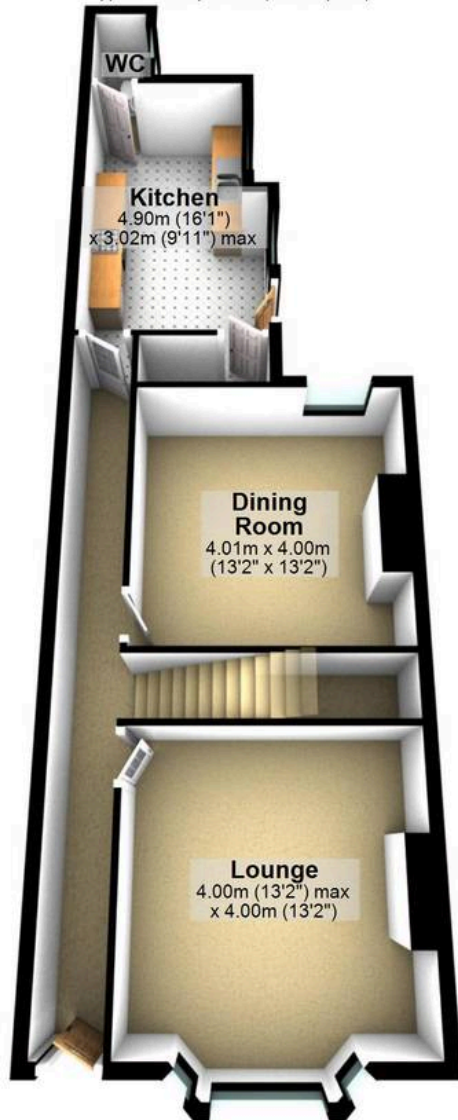
- STUNNING FOUR DOUBLE BEDROOM TWO BATHROOM BAY WINDOWED VILLA STYLE TERRACE PROPERTY
- FABULOUS MASTER LOFT BEDROOM WITH EN-SUITE SHOWER ROOM
- THREE INCREDIBLE FLOORS OF ACCOMMODATION THAT TOTAL AN IMPRESSIVE 1,704 SQ FEET
- HEART OF ULTRA POPULAR BOTANICAL GARDENS ON THE SOUTH WEST OF THE CITY
- EXCELLENT SCHOOLING CATCHMENTS INCLUDING HUNTERS BAR JUNIORS AND HIGH STORRS SECONDARY
- ENDCLIFFE PARK AT THE END OF THE ROAD AND ECCLESALL ROAD/SHARROW VALE A SHORT STROLL PERFECT FOR THE GROWING FAMILY OR





### Ground Floor

Approx. 64.2 sq. metres (691.5 sq. feet)



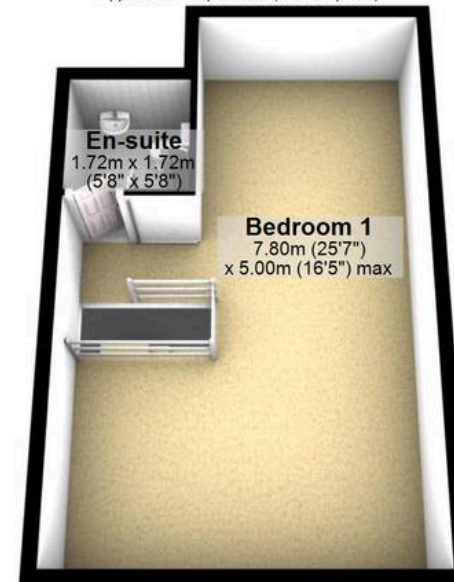
### First Floor

Approx. 56.9 sq. metres (613.0 sq. feet)



### Second Floor

Approx. 37.1 sq. metres (399.5 sq. feet)



Total area: approx. 158.3 sq. metres (1704.0 sq. feet)

All measurements are approximate  
Plan produced using PlanUp.