



WHITEHORSES

Buy. Sell. Let. Relax!

0114 268 8533
info@whitehorses.com
www.whitehorses.com

16 Rothay Close, Dronfield Woodhouse

Dronfield

Guide Price **£410,000**

16 Rothay Close

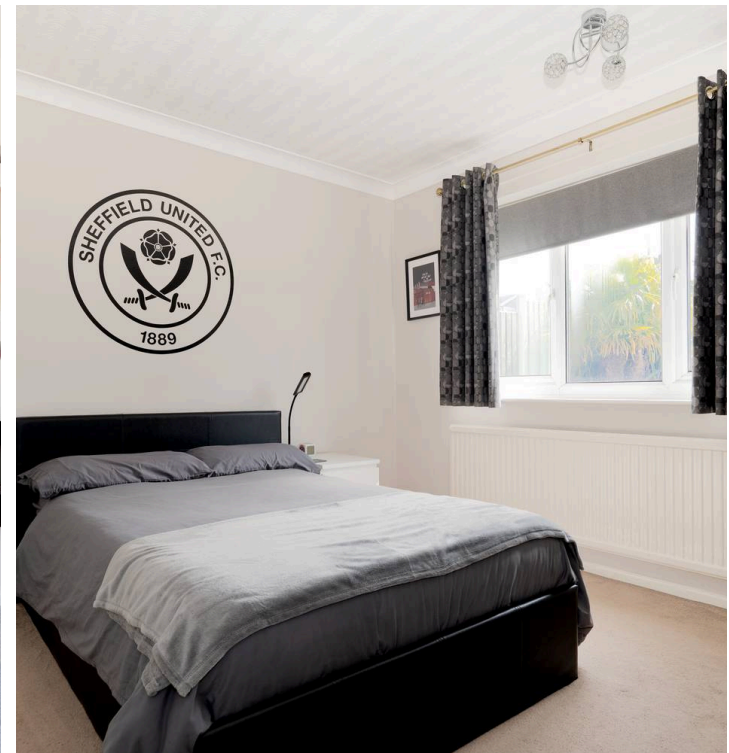
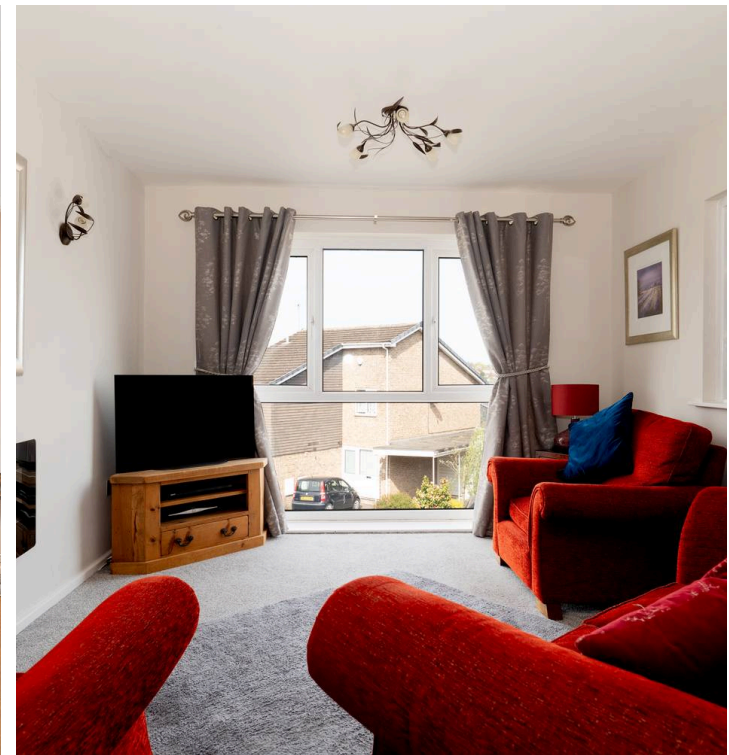
Dronfield Woodhouse, Dronfield

An internal inspection is essential to truly appreciate both the size and space on offer in this stylish and modern four bedroomed detached property. Located right in the heart of the popular suburb of Dronfield, with easy access to not only unrivalled transport links but also a wealth of nearby shops, cafes and pubs as well as sitting in the catchment for many local reputable schools. Perfect for growing families this property briefly consists of large entrance hallway, downstairs WC, bright and airy lounge, well appointed dining/kitchen, four great sized double bedrooms, dining space and very large integral garage. Outside to the rear are well enclosed family friendly gardens and to the front is ample off street parking.

Council Tax band: D

Tenure: Freehold

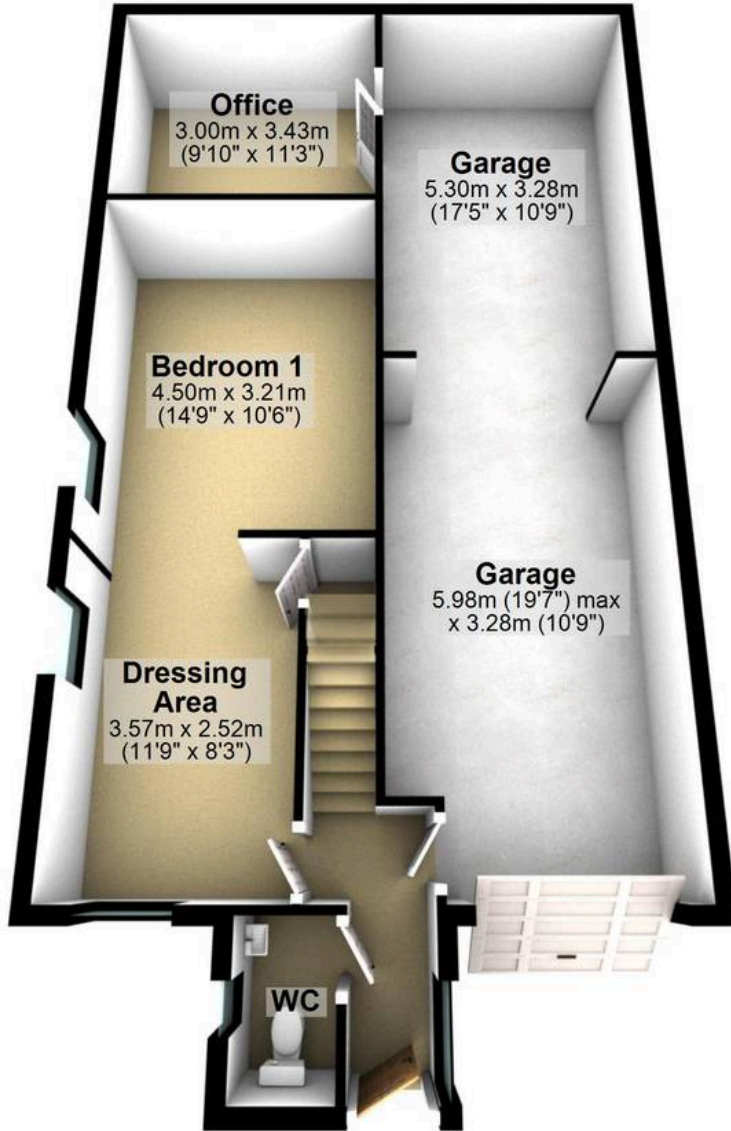
- FOUR BEDROOMED DETACHED PROPERTY
- VERY LARGE INTEGRAL GARAGE
- TWO RECEPTION ROOMS
- CLOSE TO LOCAL AMENITIES
- REPUTABLE LOCAL SCHOOLS
- NO ONWARD CHAIN
- GREAT TRANSPORT LINKS
- VERY WELL PRESENTED
- PRIVATE AND FAMILY FRIENDLY GARDENS
- AMPLE OFF ROAD PARKING





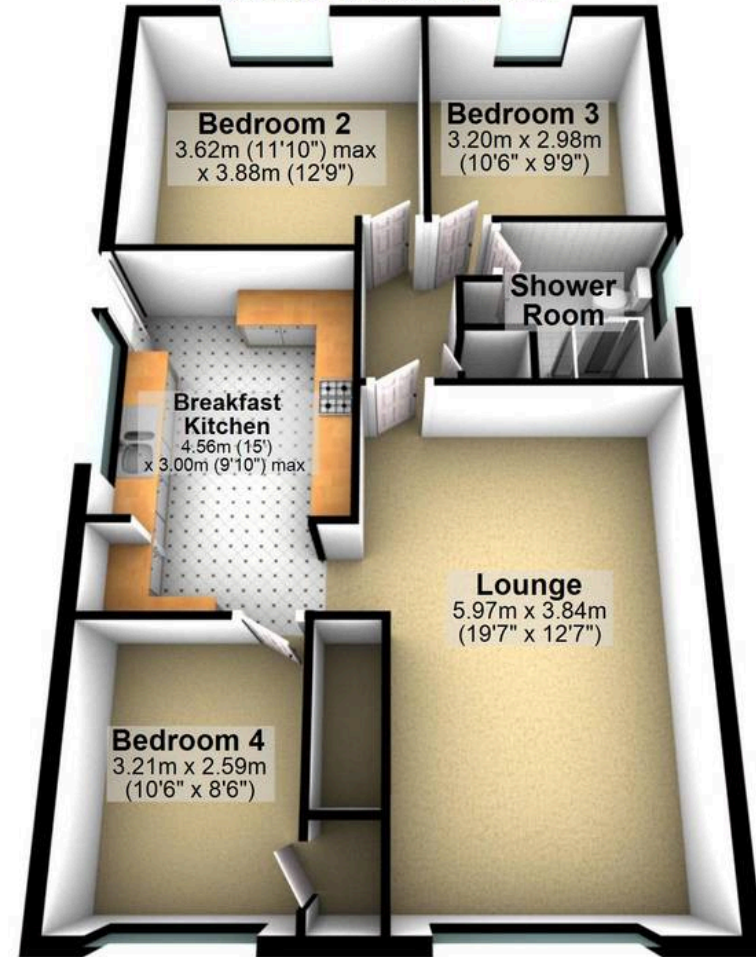
Ground Floor

Approx. 81.8 sq. metres (880.2 sq. feet)



First Floor

Approx. 79.4 sq. metres (855.0 sq. feet)



Total area: approx. 161.2 sq. metres (1735.2 sq. feet)

All measurements are approximate
Plan produced using PlanUp.