



**WHITEHORNES**

Buy. Sell. Let. Relax!

0114 268 8533  
info@whitehorses.com  
www.whitehorses.com

**10 Aisthorpe Road, Woodseats**

Sheffield

Guide Price **£180,000**



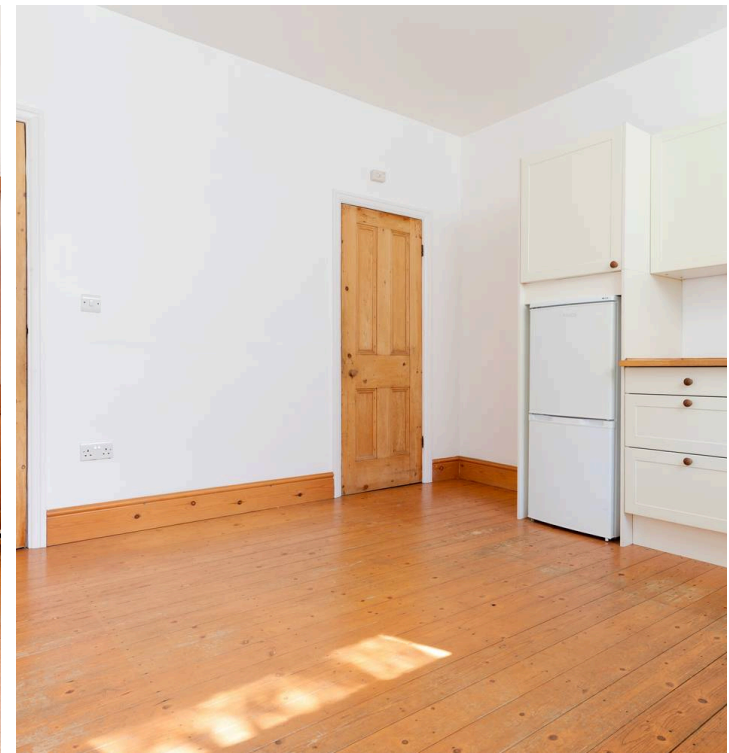
# 10 Aisthorpe Road

Woodseats, Sheffield

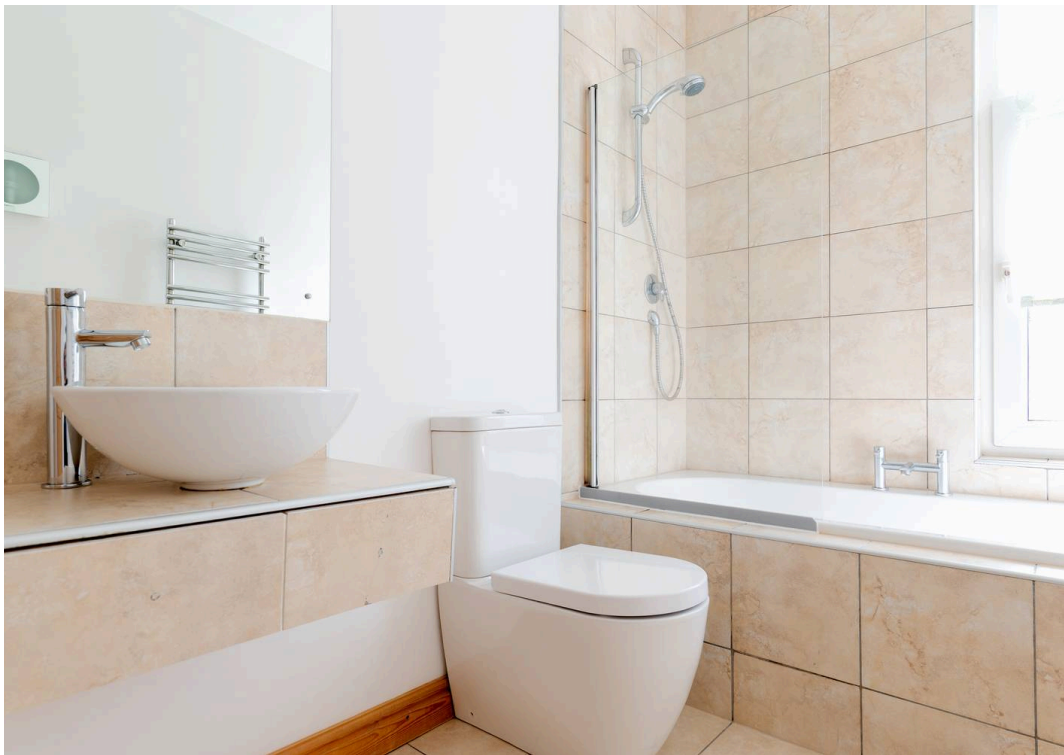
Perfect for first time buyers and investors alike is this spacious and well presented two bedroom terrace property. Offered for sale with no onward chain and being located in the heart of the ever popular residential suburb of Woodseats and being in an ideal location to take advantage of not only the unrivalled public transport links but also has a host of local amenities within easy walking distance. The property has been finished to a high standard throughout and briefly consists of kitchen/dining room, spacious and bright lounge, two double bedrooms and family bathroom. Outside is a pleasant garden and to the front is ample on street parking.

Council Tax band: TBD

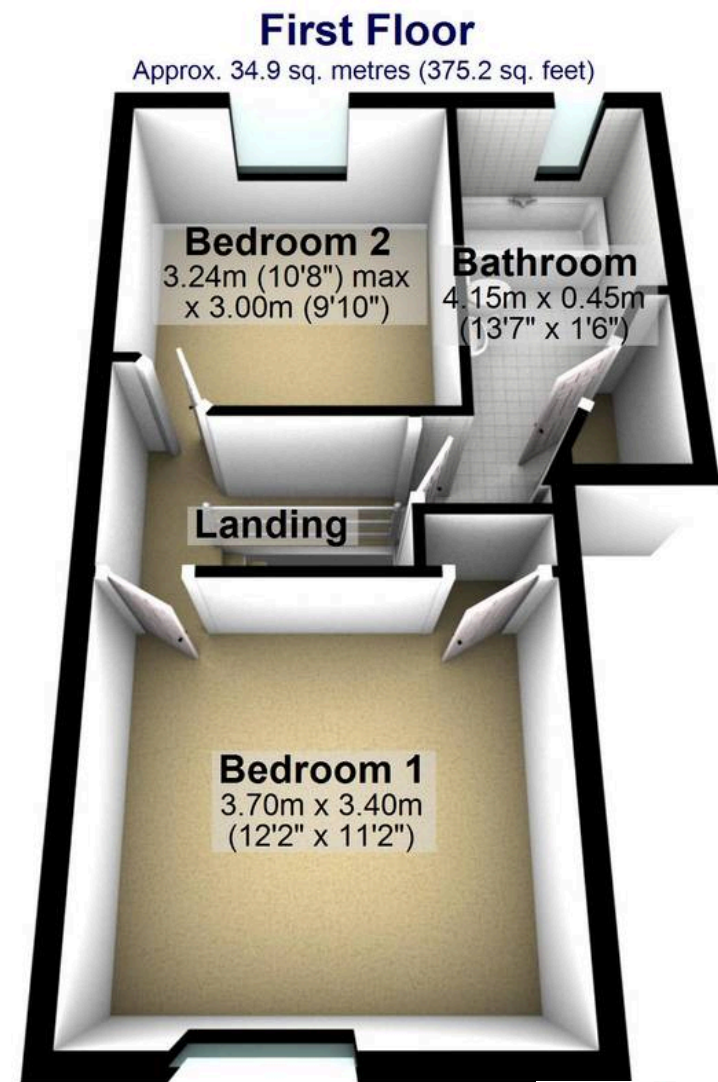
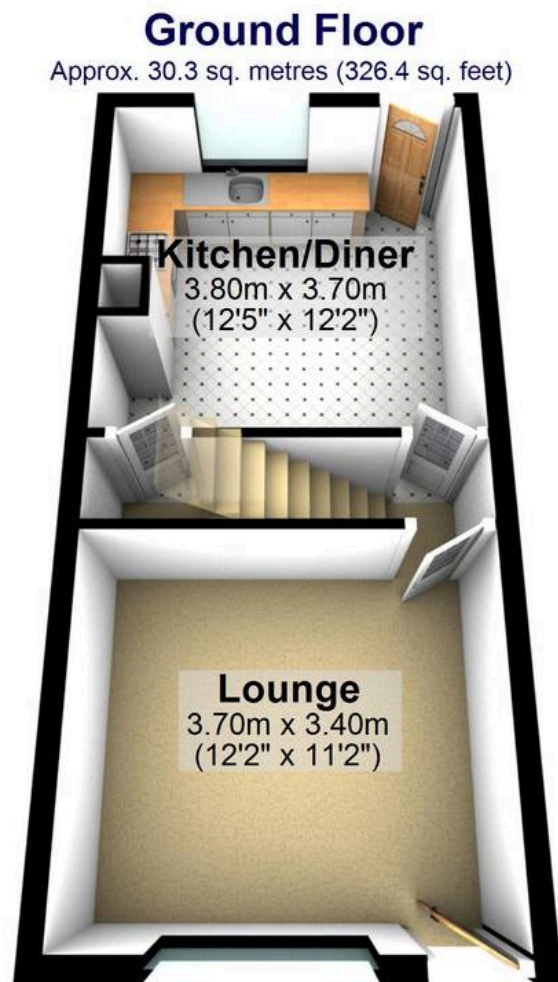
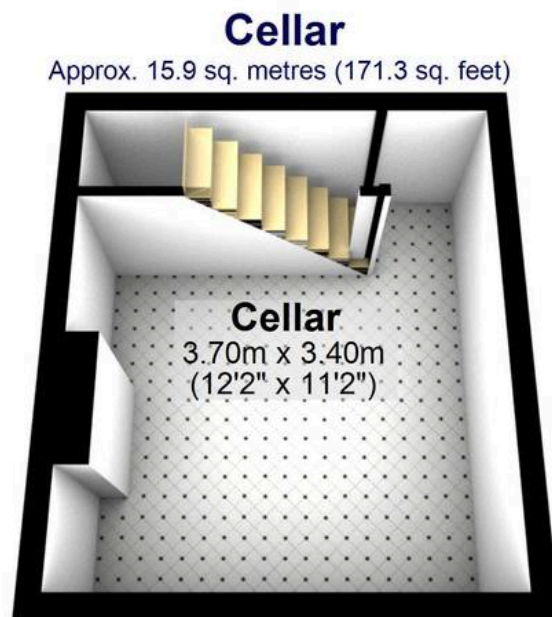
- TWO BEDROOMED MID TERRACED PROPERTY
- PERFECT FOR FIRST TIME BUYERS
- EXCELLENT BUY TO LET OPPORTUNITY
- CLOSE TO WOODSEAT'S MANY SHOPS, CAFES AND PUBS
- EXCELLENT PUBLIC TRANSPORT LINKS
- AMPLE ON STREET PARKING
- CLOSE TO GRAVES PARK
- REPUTABLE LOCAL SCHOOLS
- OFFERED FOR SALE WITH NO ONWARD CHAIN
- PLEASANT REAR GARDEN











Total area: approx. 81.1 sq. metres (872.9 sq. feet)

All measurements are approximate  
Plan produced using PlanUp.