



WHITEHORSES

Buy. Sell. Let. Relax!

0114 268 8533
info@whitehorses.com
www.whitehorses.com

7 Archibald Road, Sheffield

Sheffield

Guide Price £325,000

7 Archibald Road

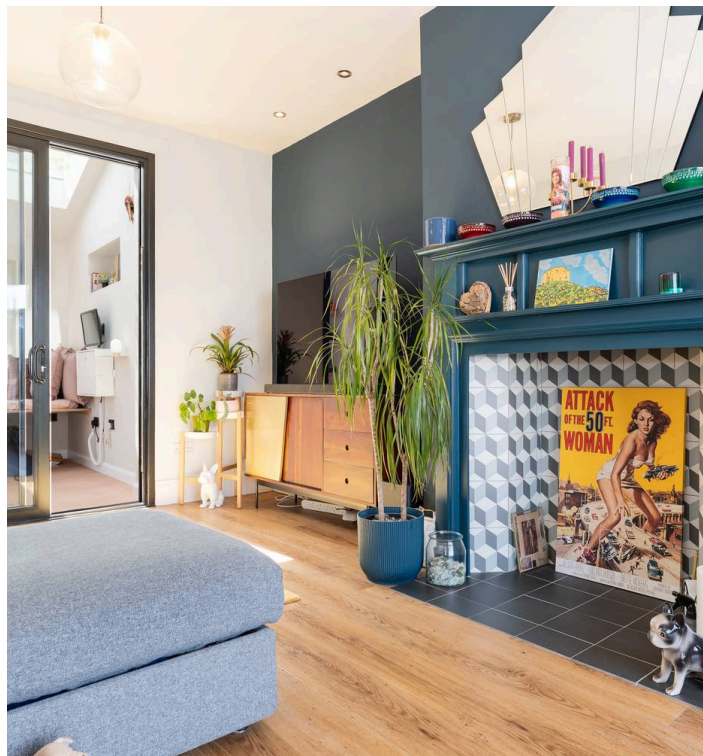
Sheffield, Sheffield

An early viewing is advised to take advantage of the opportunity to take possession of this stylish and modern three bedroomed extended semi-detached family home. Located in the heart of undoubtedly one of Sheffield's most sought after suburbs with easy access to not only a wealth of shops, cafes and restaurants but also having superb transport links and many reputable local schools. Having been finished throughout to a great standard by the current owners this property would be ideal for growing families and briefly consists of entrance hallway, through lounge, large and well appointed kitchen, three great sized bedrooms and family bathroom. Outside is a pleasant and private rear garden perfect for families and pets, to the front is off road parking.

Council Tax band: B

Tenure: Leasehold

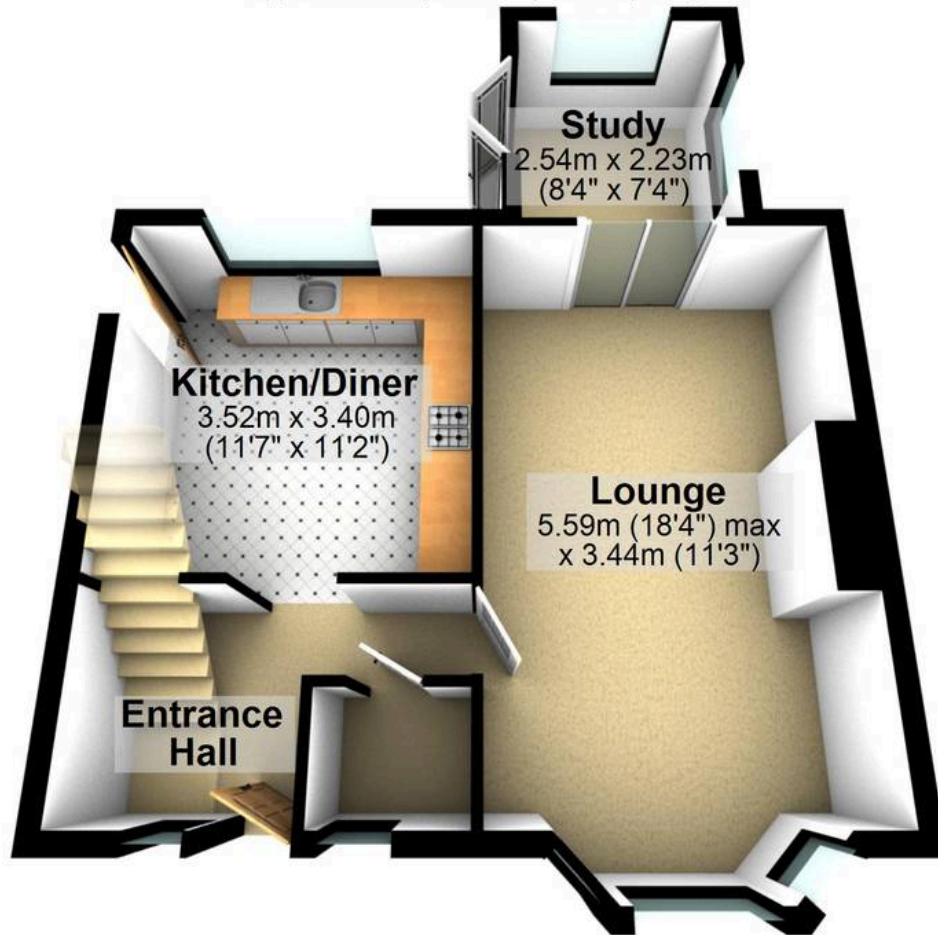
- STUNNING THREE BEDROOMED SEMI-DETACHED HOME
- MODERN AND STYLISH THROUGHOUT
- PERFECT FAMILY HOME
- PERFECT LOCATION IN THE HEART OF NETHER EDGE
- SOUTH FACING PRIVATE REAR GARDEN
- NO EXPENSE SPARED
- EXTENDED TO THE REAR
- REPUTABLE LOCAL SCHOOLS
- CLOSE TO WEALTH OF LOCAL AMENITIES
- AMPLE ON STREET PARKING





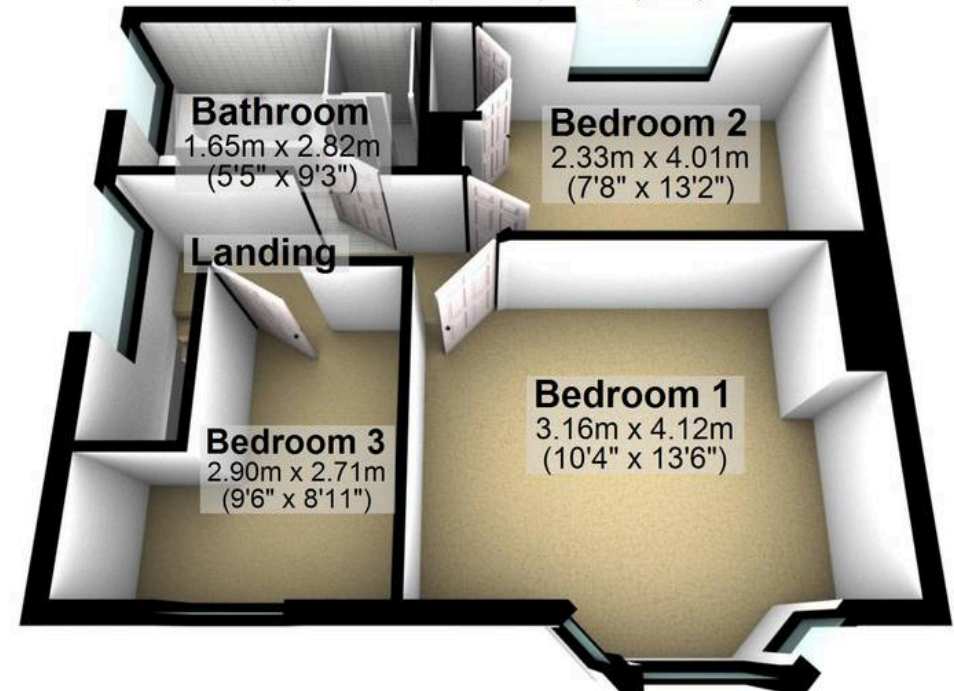
Ground Floor

Approx. 45.0 sq. metres (484.5 sq. feet)



First Floor

Approx. 39.1 sq. metres (420.6 sq. feet)



Total area: approx. 84.1 sq. metres (905.1 sq. feet)

All measurements are approximate
Plan produced using PlanUp.



WHITEHORNES

Buy. Sell. Let. Relax!

0114 268 8533
info@whitehornes.com
www.whitehornes.com