



WHITEHORSES

Buy. Sell. Let. Relax!

0114 268 8533
info@whitehorses.com
www.whitehorses.com

24 St. Francis Close, Crosspool

Sheffield

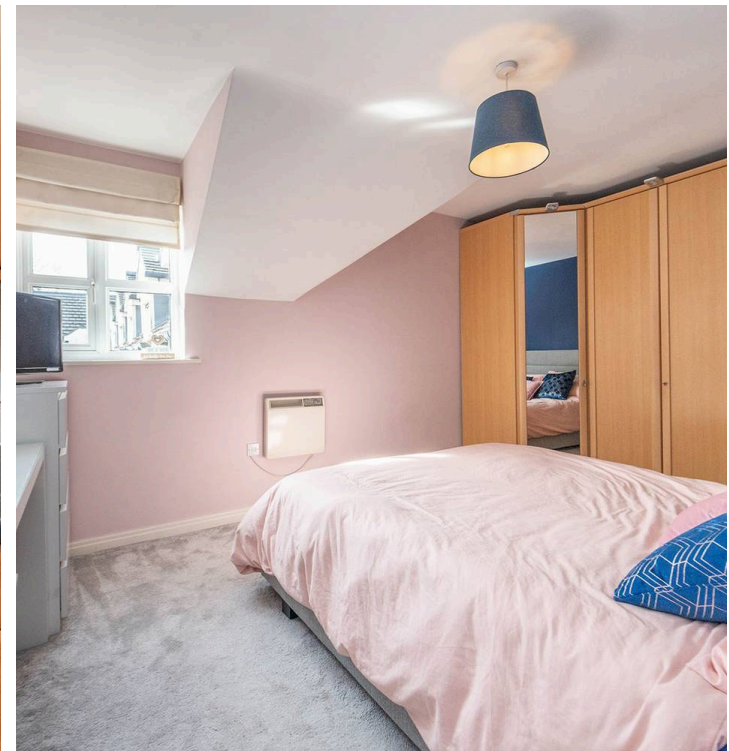
Offers in Region of £195,000

24 St. Francis Close

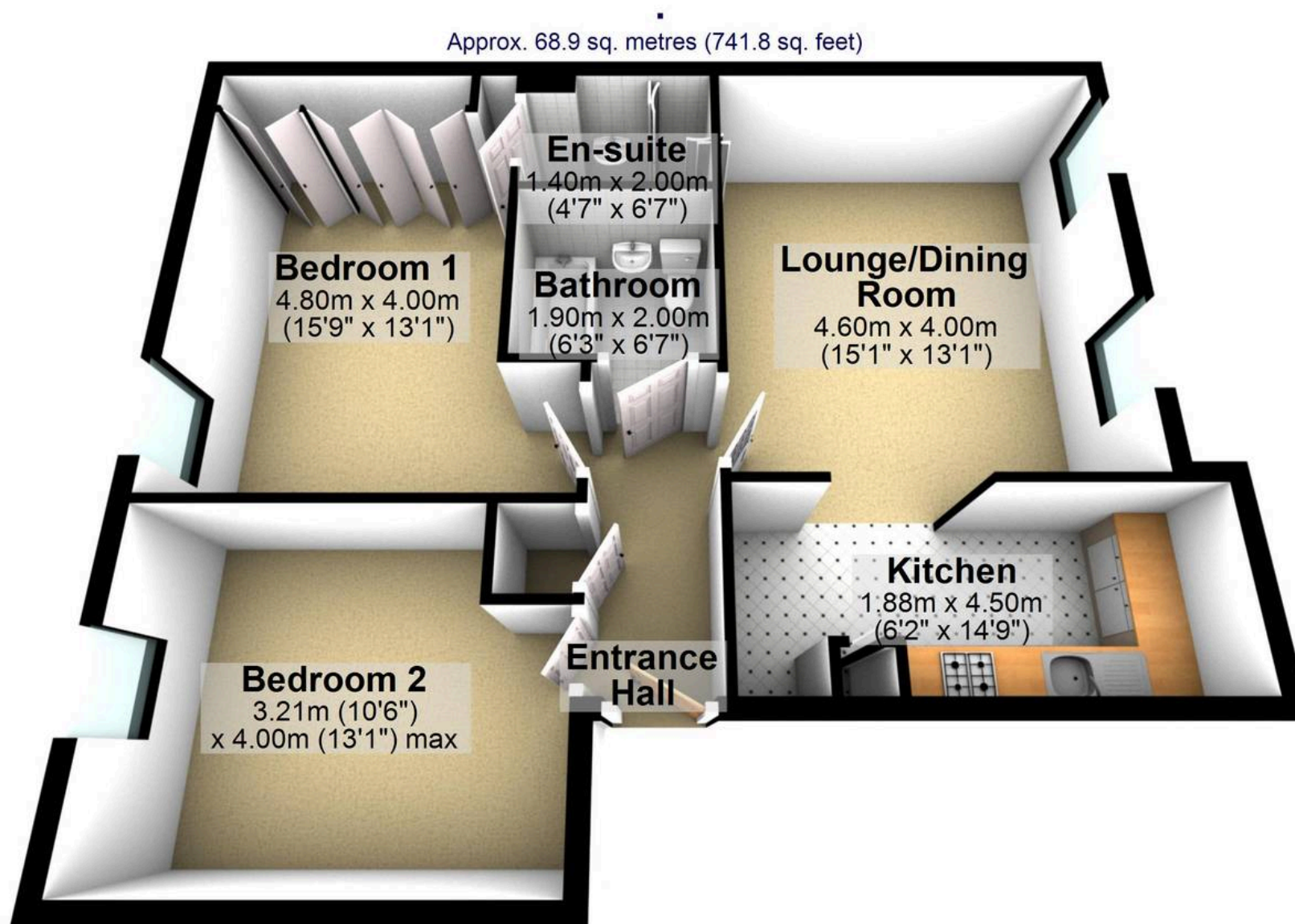
Crosspool, Sheffield

Step inside this fabulous two double, two-bathroom luxury apartment, forming part of a quiet and exclusive residential development nestled in the heart of the ultra-popular Sheffield 10, within the well sought after neighbourhood of Crosspool on the southwest side of the city. This stunning property boasts an integrated fitted separate kitchen, two good-sized double bedrooms, with an en-suite to the master. Enjoy a short stroll to Crosspool shops and facilities, along with excellent public transport links at your doorstep, making it a convenient location for professionals, first-time buyers, or those looking to downsize. The property offers full use of communal gardens, a private parking bay, and ample visitor spaces, ensuring practicality. Spanning an impressive 741 square feet, the apartment provides spacious and light-filled accommodation, perfect for a comfortable and modern lifestyle. Council Tax band: C Tenure: Leasehold

- FABULOUS TWO DOUBLE TWO BATHROOM LUXURY APARTMENT
- FORMING PART OF THIS QUIET AND EXCLUSIVE RESIDENTIAL DEVELOPMENT
- HEART OF ULTRA POPULAR SHEFFIELD 10 WITHIN CROSSPOOL ON THE SOUTH WEST OF THE CITY
- INTEGRATED FITTED SEPARATE KITCHEN TWO GOOD SIZED DOUBLE BEDROOMS AND EN-SUITE TO THE MASTER
- SHORT STROLL TO CROSSPOOL SHPS AND FACILITIES ALONG WITH GREAT PUBLIC TRANSPORT LINKS
- PERFECT FOR THE FIRST BUY PROFESSIONAL COUPLE OR THOSE LOOKING TO DOWNSIZE
- FULL USE OF COMMUNAL GARDENS PRIVATE PARKING BAY AND AMPLE VISITOR SPACES







Total area: approx. 68.9 sq. metres (741.8 sq. feet)

All measurements are approximate
Plan produced using PlanUp.