



WHITEHORNES

Buy. Sell. Let. Relax!

0114 268 8533
info@whitehorses.com
www.whitehorses.com

68 Buchanan Road, Sheffield

Sheffield

Prices From **£120,000**

68 Buchanan Road

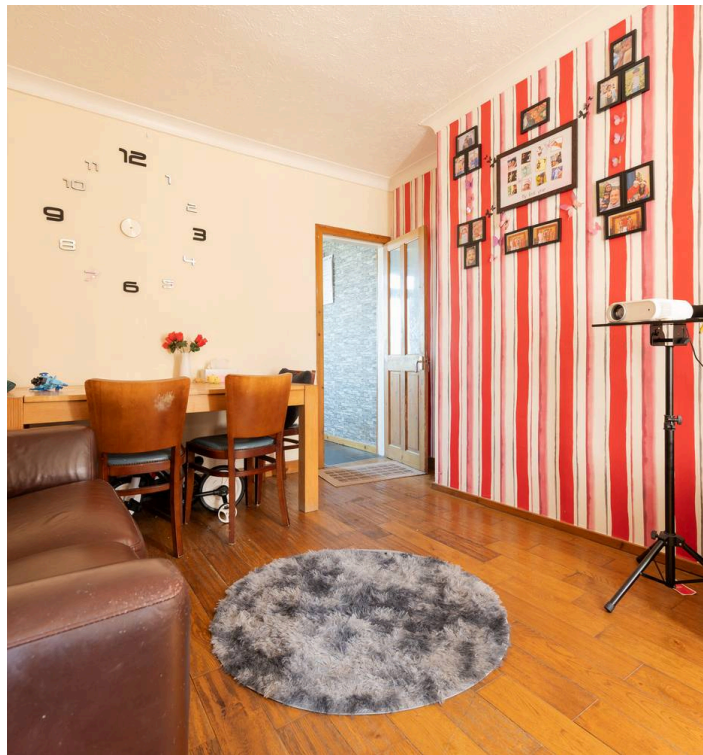
Sheffield, Sheffield

Ideal for first time buyers or investors looking to expand their portfolio, number 68, briefly consists of an ample kitchen/diner, living room, two double bedrooms and a family bathroom totalling 668 SQ FT of accommodation. To the outside is a low maintenance, family friendly enclosed garden. On the front is easy off road parking. Situated close by to numerous local amenities including Parsons Cross Park and Longley Park. Benefitting from close proximity to local schools including Southey Green primary school and Chaucer School. Viewing is essential to see the full potential on offer.

Council Tax band: A

Tenure: Freehold

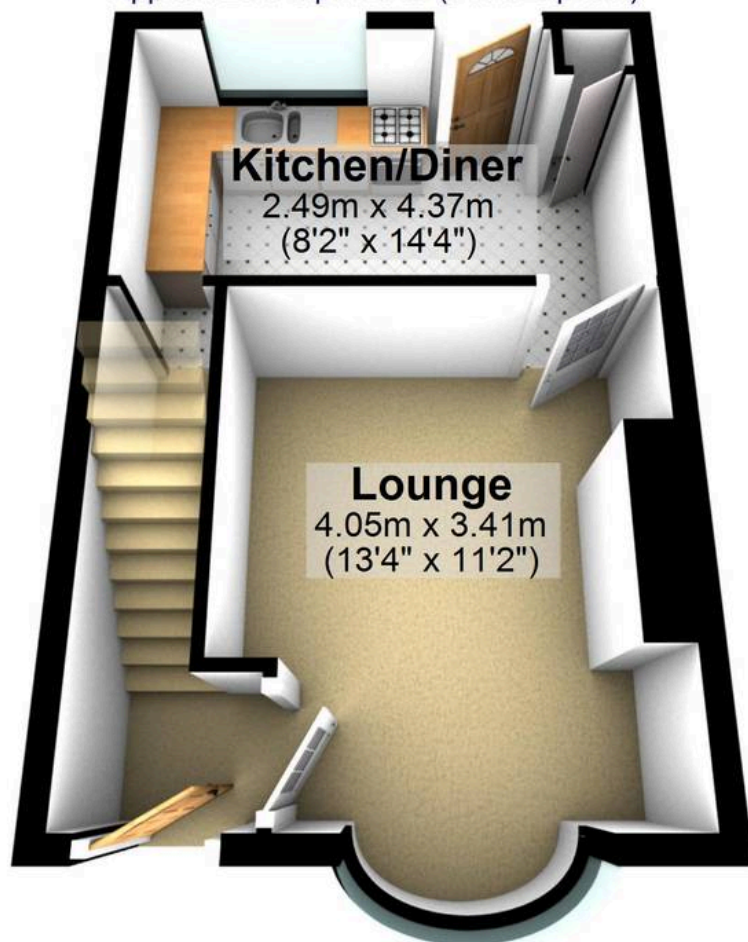
- TWO BEDROOMED MID-TERRACED PROPERTY
- IDEAL FOR FIRST TIME BUYERS OR INVESTORS
- LARGE REAR ENCLOSED GARDEN
- PARSON CROSS PARK A SHORT STROLL AWAY
- CLOSE BY TO LOCAL SCHOOLS INCLUDING SOUTHEY GREEN PRIMARY
- EASY AMPLE OFF ROAD PARKING
- NUMEROUS TRANSPORT LINKS CLOSE BY
- TOTALLING 668 SQ FT OF ACCOMMODATION
- EPC RATING D
- FREEHOLD PROPERTY AND COUNCIL TAX BAND A





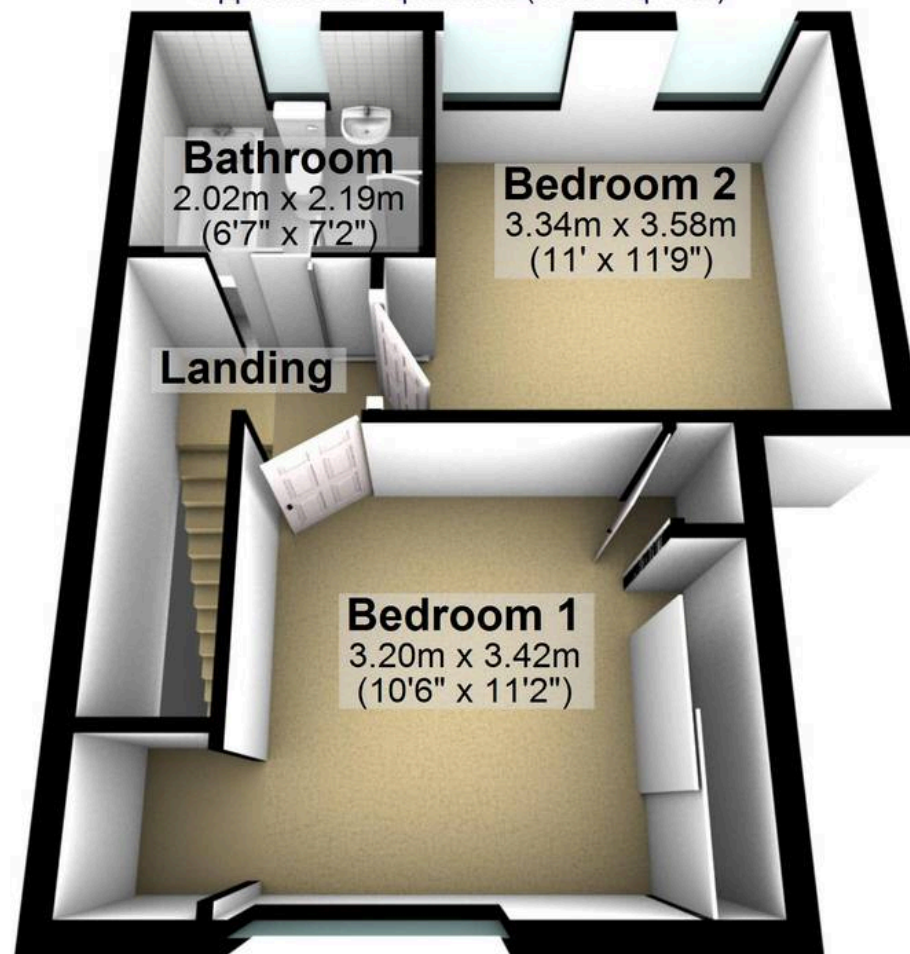
Ground Floor

Approx. 29.3 sq. metres (315.3 sq. feet)



First Floor

Approx. 32.8 sq. metres (352.7 sq. feet)



Total area: approx. 62.1 sq. metres (668.0 sq. feet)

All measurements are approximate
Plan produced using PlanUp.