



WHITEHORNES
Buy. Sell. Let. Relax!
0114 268 8533
info@whitehorns.com
www.whitehorns.com

14 Cherry Bank Road, Norton Lees

Sheffield

Guide Price £475,000 - £495,000

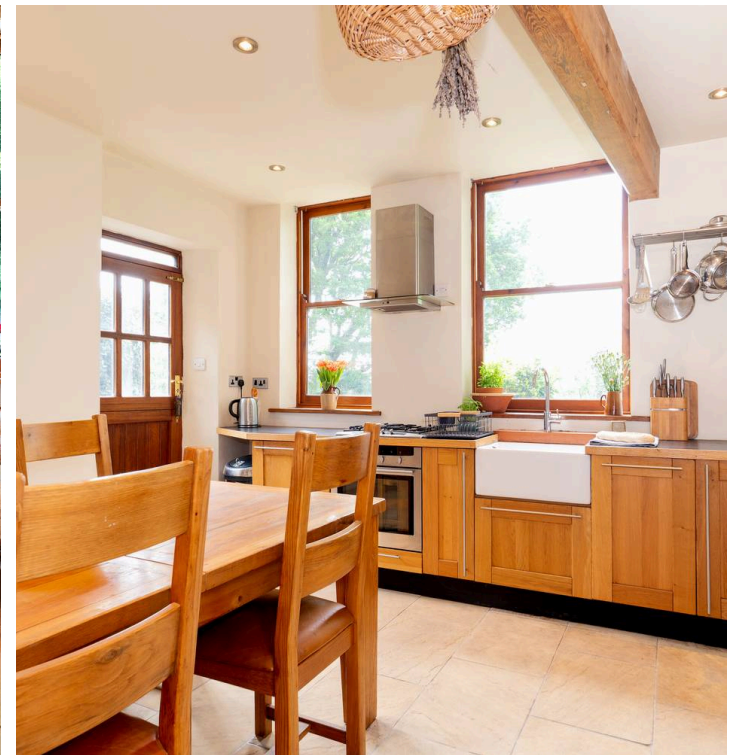
14 Cherry Bank Road

Norton Lees, Sheffield

A once in a lifetime opportunity has arisen to purchase this simply fabulous three double bedroom, detached home. Located in this little known part of Cherry Bank Road in this idyllic location on this private part of the road solely for the use of residents the property offers a semi rural vibe that ensures a huge degree of privacy. Having been lovingly restored with a flare for design and some beautiful bespoke finishing touches that have been super careful to retain the original integrity, character and charm of a property from this era and blended them with a modern and comfortable finish. With some truly draw dropping views over The Peak District to the rear this superb property offers up four fabulous and flexible floors of accommodation that total an impressive 1,348 sq feet.

Council Tax band: C Tenure: Leasehold

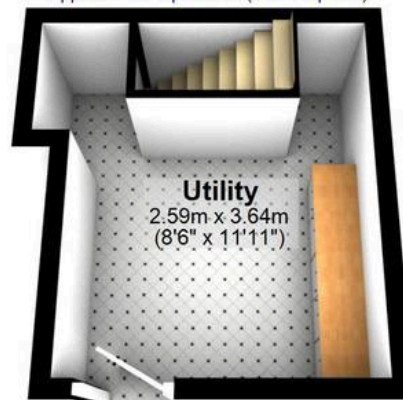
- SENSATIONAL THREE DOUBLE BEDROOM DETACHED HOME OFFERING A ONCE IN A LIFETIME OPPORTUNITY TO PURCHASE
- INCREDIBLY VIEWS THAT NEED TO BE SEEN TO BE BELIEVED OVER THE PEAK DISTRICT BEST ENJOYED FROM THE LOFT BEDROOM
- PERFECT FOR A WIDE RANGE OF BUYERS AND OFFERING A LIFESTYLE APPROACH TO LIVING
- VERY QUIET AND PRIVATE SETTING GIVING A FULLY SEMI RURAL VIBE YET IN THE HEART OF SUBURBS
- FOUR STUNNING FLOOS OF ACCOMMODATION TOTALLING AN IMPRESSIVE 1,346 SQ FEET THAT NEED TO BE VIEWED INTERNALLY TO BE FULLY APPRECIATED





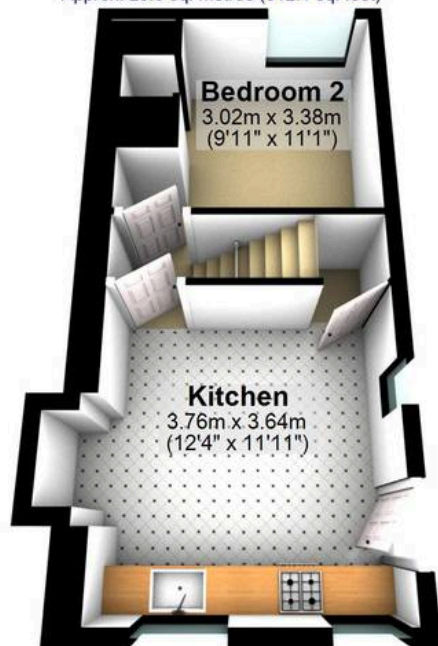
Cellar

Approx. 13.2 sq. metres (142.1 sq. feet)



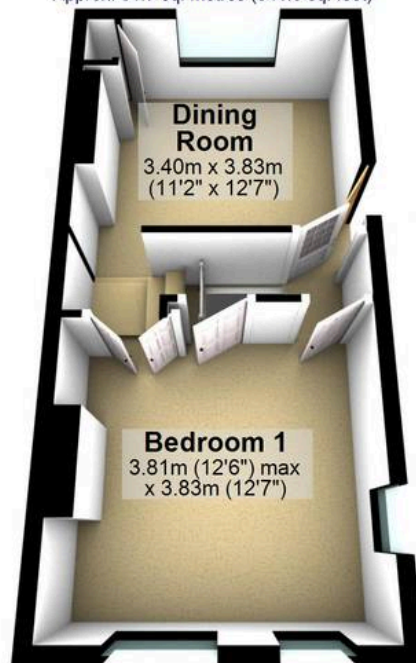
Ground Floor

Approx. 29.0 sq. metres (312.1 sq. feet)



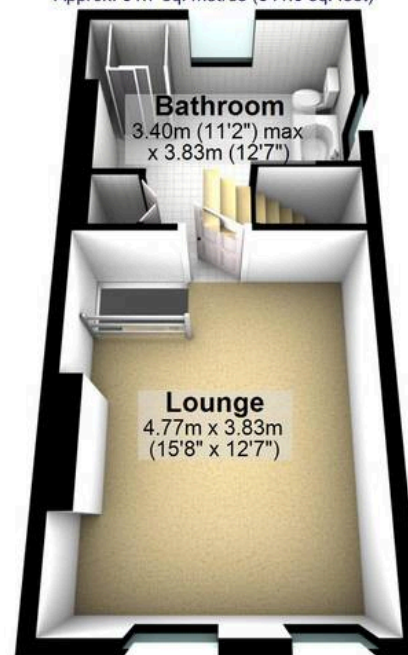
First Floor

Approx. 31.7 sq. metres (341.0 sq. feet)



Second Floor

Approx. 31.7 sq. metres (341.0 sq. feet)



Third Floor

Approx. 19.7 sq. metres (211.9 sq. feet)



Total area: approx. 125.2 sq. metres (1348.2 sq. feet)

All measurements are approximate
Plan produced using PlanUp.