



**WHITEHORNES**  
Buy. Sell. Let. Relax!  
0114 268 8533  
info@whitehorns.com  
www.whitehorns.com

23 Struan Road, Carterknowle

Sheffield

Guide Price £385,000 - £395,000



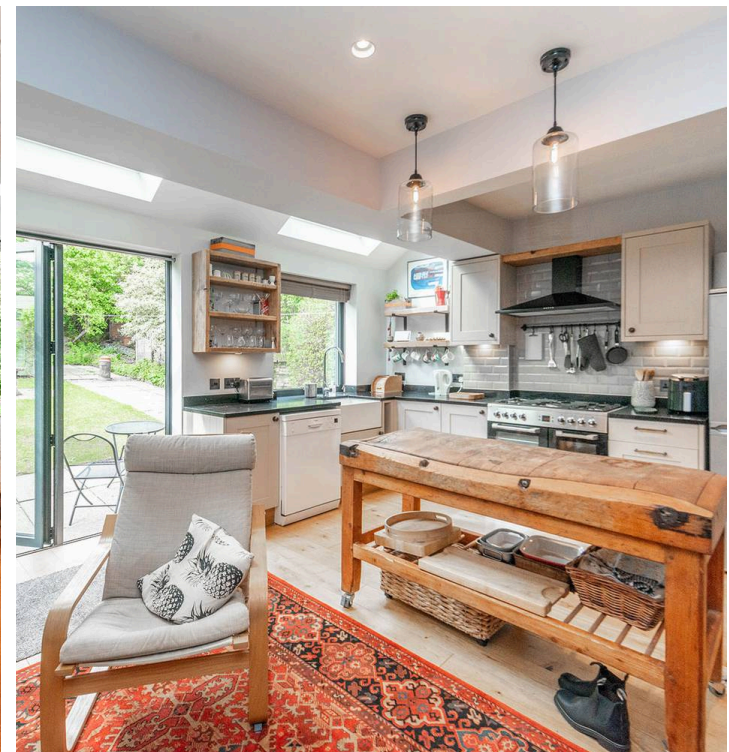
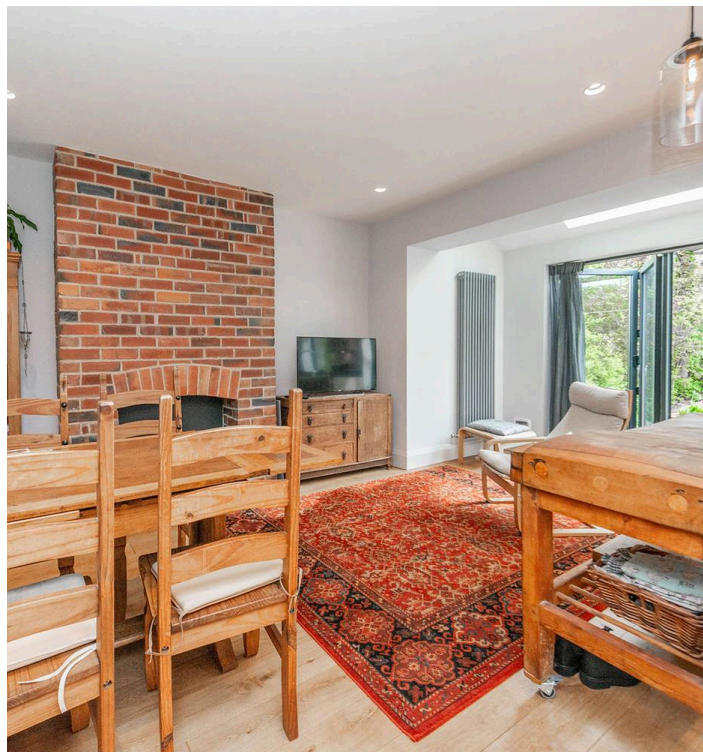
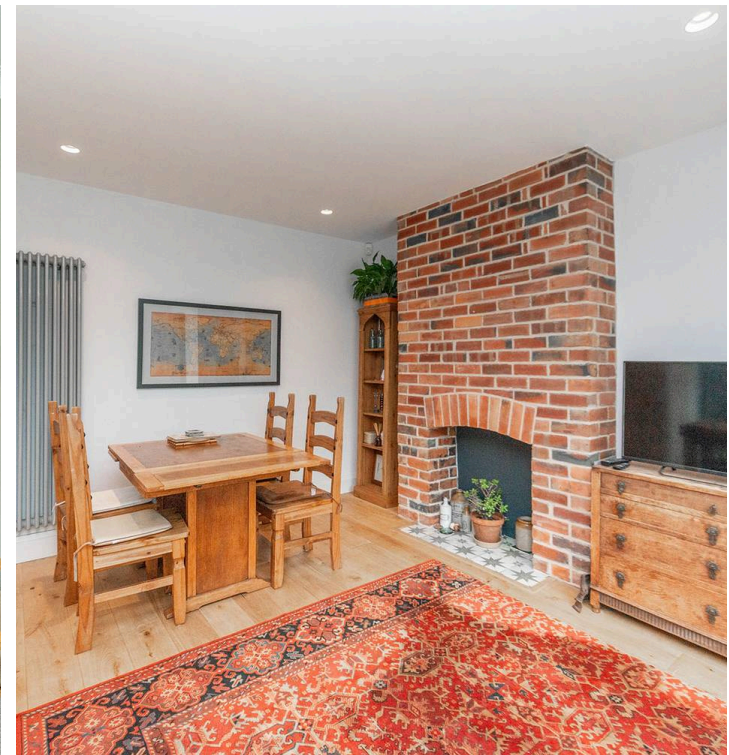
## 23 Struan Road

Carterknowle, Sheffield

A sensational opportunity presents itself with this stunning three-bedroom extended bay windowed semi-detached home in the heart of the highly sought-after Carter Knowle area. Boasting an incredible open plan dining living kitchen with bi-fold doors leading out to an exceptional south facing garden, this property offers the perfect setting for modern family living. The front bay windowed sitting room with a log burning stove adds a touch of warmth and character to the space, while the front driveway and carport provide convenient off-road parking. The location benefits from being within excellent school catchments, including Mercia Secondary, making it ideal for families. With plenty of potential to extend both to the side and loft (subject to planning permission), this property offers room to grow and adapt to suit your needs.

Council Tax band: C Tenure: Leasehold

- SENSATIONAL THREE BEDROOM EXTENDED BAY WINDOWED SEMI-DETACHED HOME
- INCREDIBLE REAR OPEN PLANN DINING LIVING KITCHEN WITH BI-FOLD DOORS TO THE GARDEN
- FRONT BAY WINDOWED SITTING ROOM WITH LOG BURNING STOVE
- STUNNING REAR PRIVATE SOUTH FACING GARDEN
- FRONT DRIVEWAY AND CARPORT
- EXCELLENT SCHOOLING CATCHMENTS INCLUDING MERCIA SECONDARY
- QUIET RESIDENTIAL ROAD IN THE VERY HEART OF ULTRA POPULAR CARTER KNOWLE



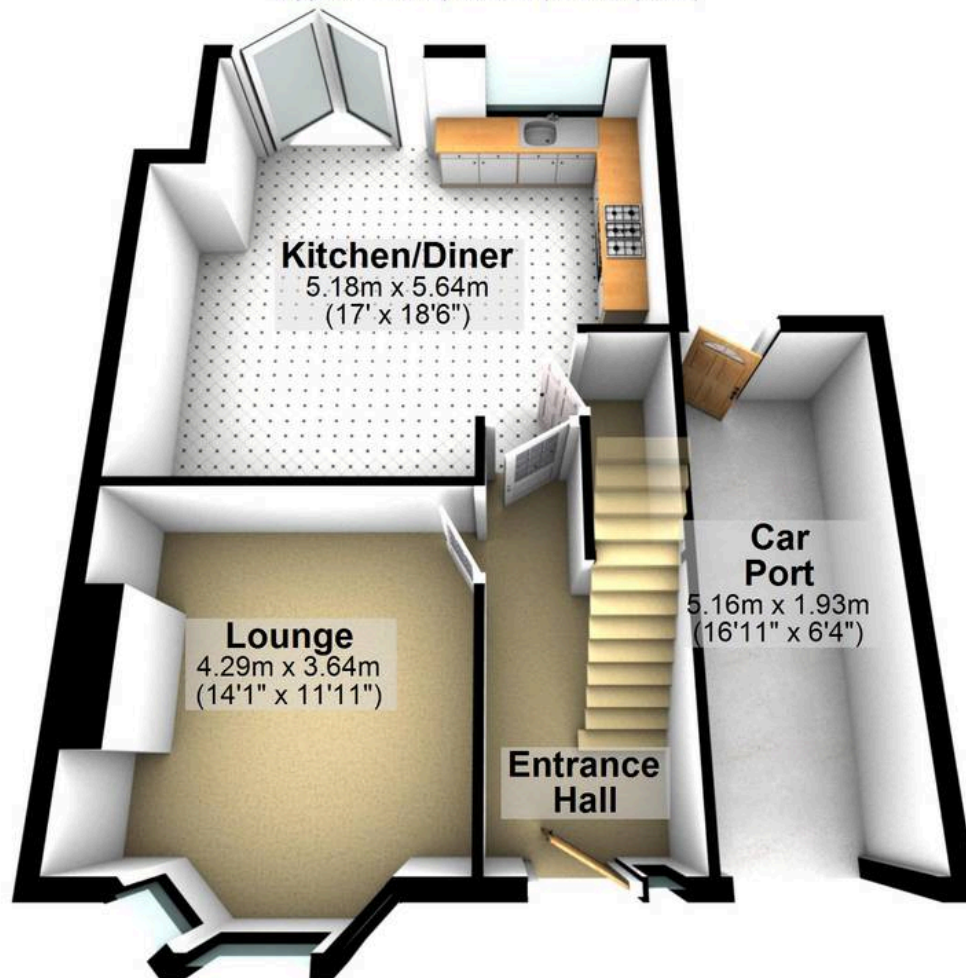






## Ground Floor

Approx. 48.8 sq. metres (525.5 sq. feet)



## First Floor

Approx. 41.0 sq. metres (441.3 sq. feet)



Total area: approx. 89.8 sq. metres (966.8 sq. feet)

All measurements are approximate  
Plan produced using PlanUp.