

Apt 302, West One Panorama, 18 Fitzwilliam Street
Sheffield

Guide Price **£125,000**

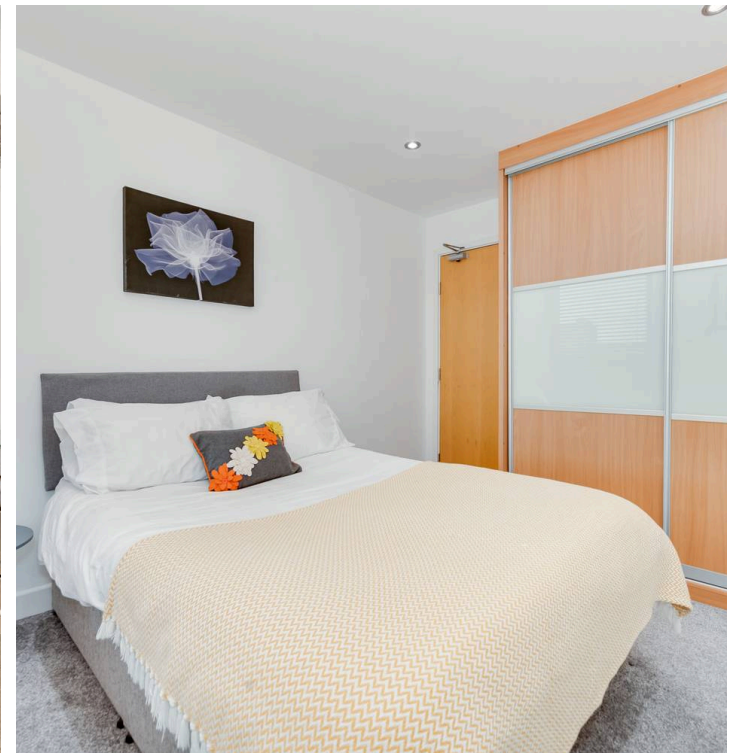
Apartment 302

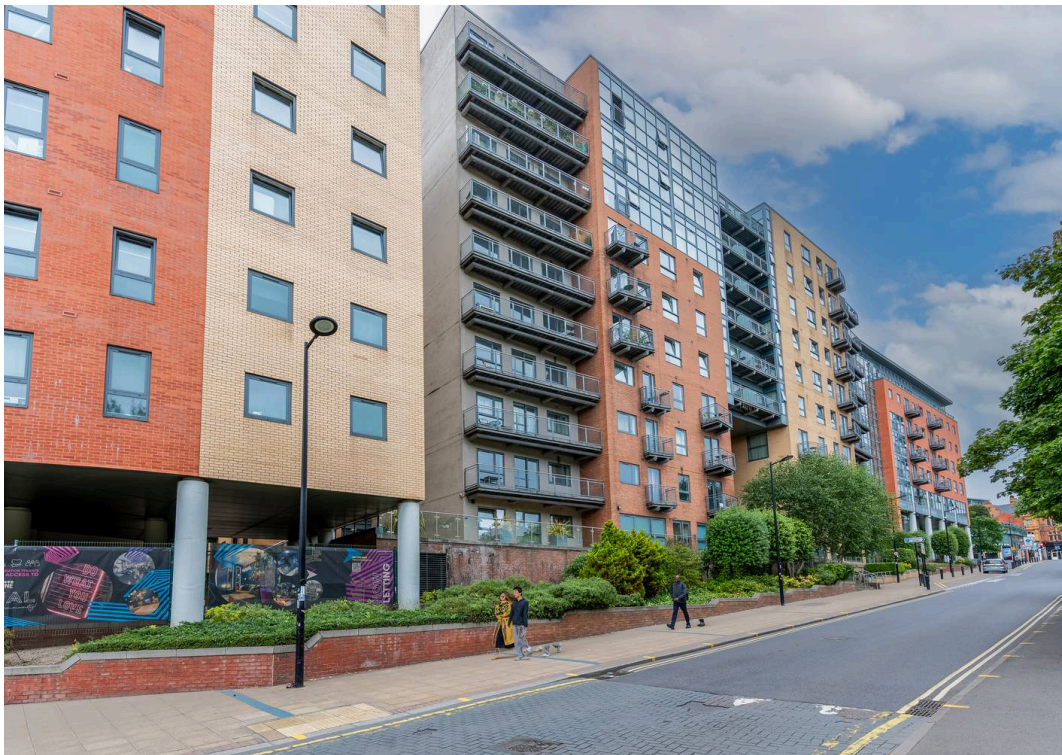
West One Panorama, Sheffield

A fabulous one bed roomed, third floor apartment perfect for first time buyers or investors alike. Forming part of this superb residential development in the very heart of ultra fashionable Devonshire quarter and enjoying some fabulous views over Devonshire green from the fantastic balcony. With the city centre literally on the door step, universities, hospitals and urban green spaces are all close by together with the train station and of course The Peak District is right up the road. With a super light and bright, spacious feel the accommodation in brief comprises entrance hall with storage, open plan sitting and dining room that flows to an integrated kitchen, double bedroom and contemporary bathroom. Outside are full use of communal gardens and contract parking is also available within close proximity. Benefitting from 24/7 concierge service on the ground floor and intercom system. VALUER - BEN WHITEHORNE
Council Tax band: A

Tenure: Leasehold

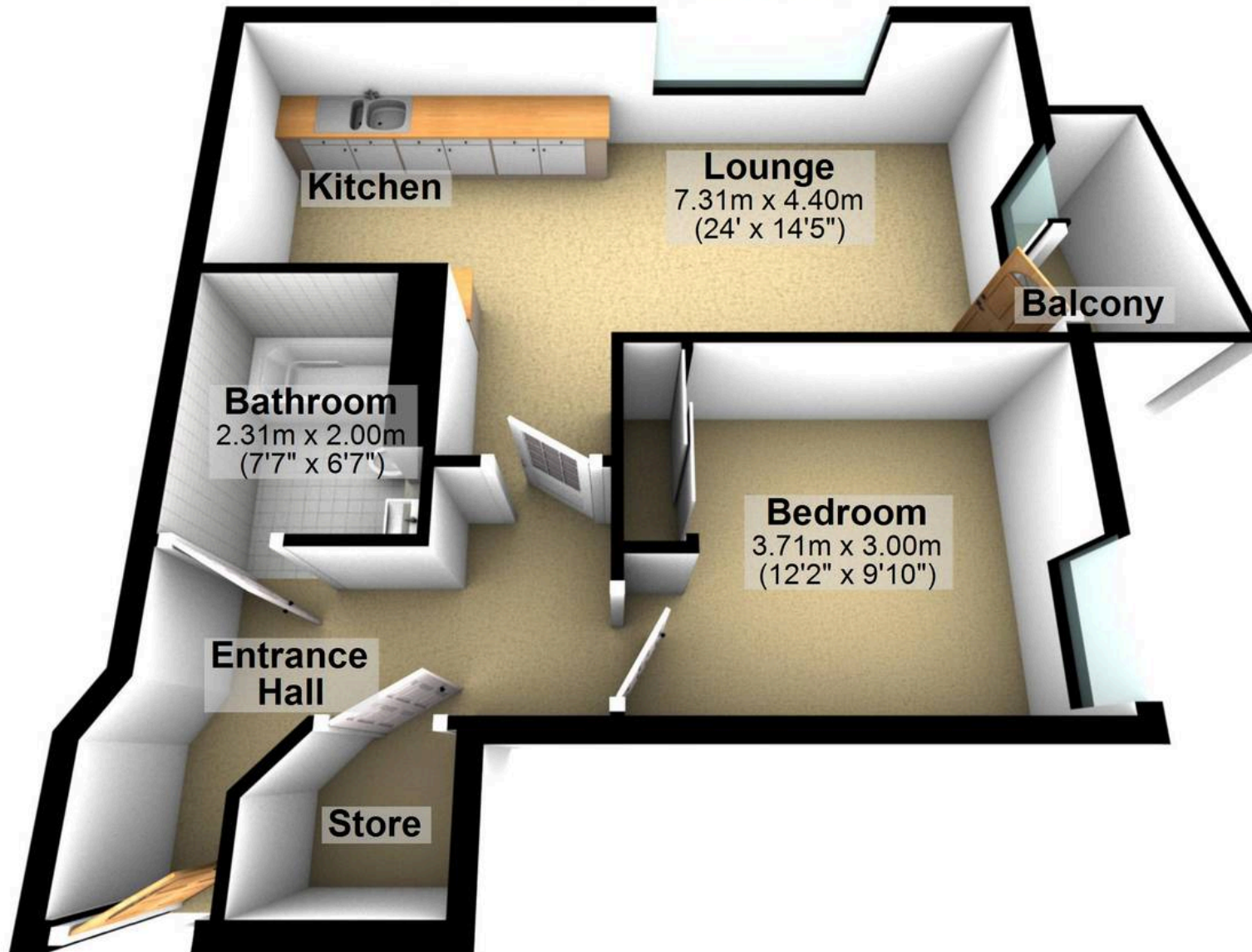
- FANTASTIC ONE BEDROOM APARTMENT
- HEART OF THE CITY LIVING
- CLOSE TO UNIVERSITIES AND HOSPITALS
- IDEAL FOR FIRST TIME BUYERS OR INVESTORS ALIKE
- SUPERB TRANSPORT LINKS
- FABULOUS VIEWS OVER THE CITY
- SPACIOUS ACCOMMODATION THROUGHOUT
- LIFT ACCESS AND SECURE INTERCOM ENTRANCE
- LEASEHOLD APARTMENT AND COUNCIL TAX BAND A
- VIEWING ESSENTIAL TO DO FULL JUSTICE





Ground Floor

Approx. 50.4 sq. metres (542.8 sq. feet)



Total area: approx. 50.4 sq. metres (542.8 sq. feet)

All measurements are approximate
Plan produced using PlanUp.



WHITEHORNS

Buy. Sell. Let. Relax!

0114 268 8533
info@whitehorns.com
www.whitehorns.com