

29 Westbrook Bank, Sharrow Vale

Sheffield

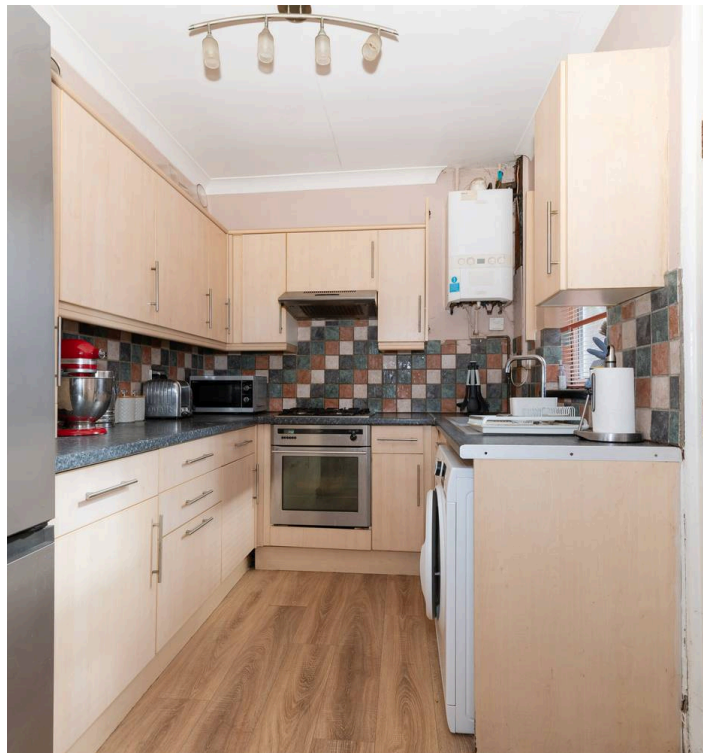
Guide Price £375,000 - £395,000

29 Westbrook Bank

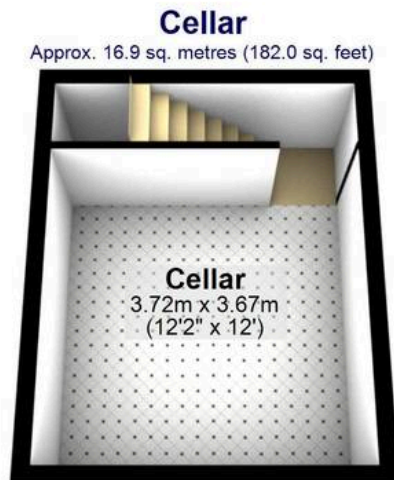
Sharrow Vale, Sheffield

A incredibly well presented and substantial four double bedroom period Victorian terraced property sits in an elevated position, offering privacy and stunning views. With a prime location just a short stroll away from fashionable Sharrow Vale independent cafes, eateries, and shops, this home boasts three super spacious floors of accommodation totalling an impressive 1,442 sq feet. The private rear garden provides a peaceful retreat, with no through fare from neighbouring properties, complemented by a residents parking scheme to the front. The double rear off-shot includes a bathroom above the kitchen, adding to the convenience and functionality of this property. Ideal for a professional couple or young family it's easy to say that viewing is essential to do full justice. Council Tax band: B Tenure: Leasehold

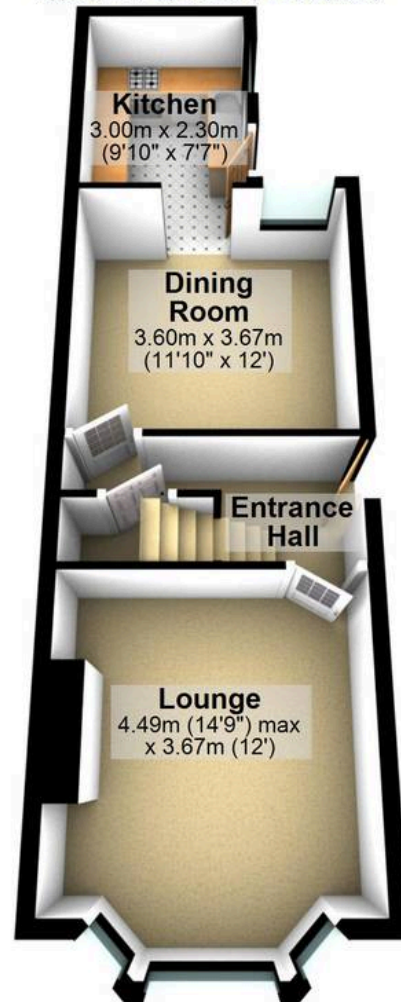
- SUBSTANTIAL FOUR DOUBLE BEDROOM PERIOD VICTORIAN TERRACED
- ELEVATED POSITION SET UP FROM THE ROAD ENSURING PRIVACY AND SOME WONDERFUL VIEWS
- SHORT STROLL TO FASHIONABLE SHARROW VALE INDEPENDENT CAFES EATERIES AND SHOPS
- THREE SUPER SPACIOUS FLOORS OF ACCOMMODATION TOTALLING AN IMPRESSIVE 1,442 SQ FEET
- PRIVATE REAR GARDEN WITH NO THROUGH FARE FROM NEIGHBOURING PROPERTIES ALONG WITH RESIDENTS PARKING SCHEME TO THE FRONT
- EXCELLENT SCHOOLING CATCHMENTS INCLUDING HUNTERS BAR JUNIORS AND HIGH STORRS



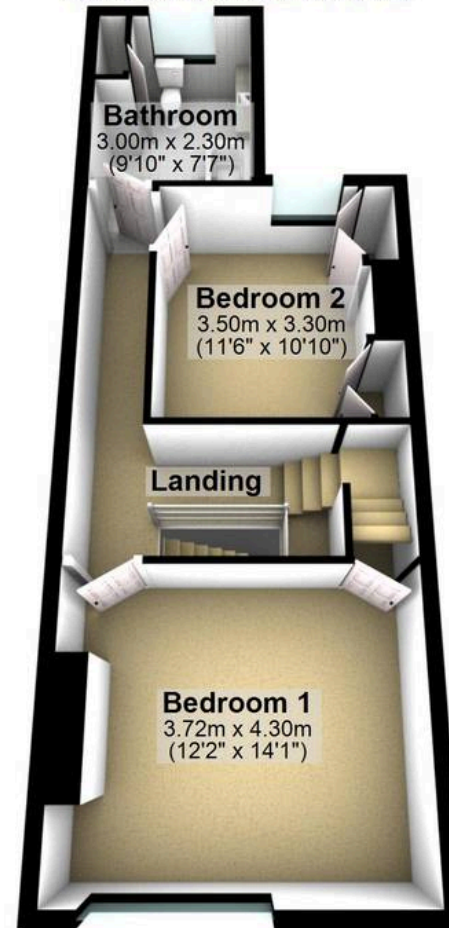




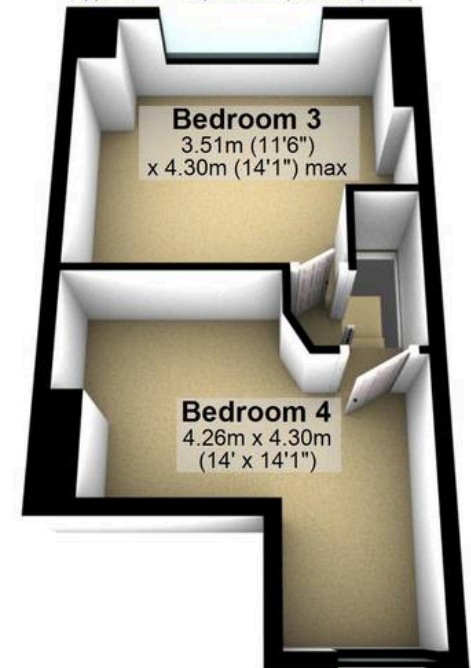
Ground Floor
Approx. 41.0 sq. metres (441.5 sq. feet)



First Floor
Approx. 46.3 sq. metres (498.8 sq. feet)



Second Floor
Approx. 29.7 sq. metres (320.0 sq. feet)



Total area: approx. 134.0 sq. metres (1442.2 sq. feet)

All measurements are approximate
Plan produced using PlanUp.


WHITEHORNES
Buy. Sell. Let. Relax!

0114 268 8533
info@whitehornes.com
www.whitehornes.com