



**WHITEHORSES**

Buy. Sell. Let. Relax!

0114 268 8533  
info@whitehorses.com  
www.whitehorses.com

## Pear Tree Lodge, Carterhall Lane, Sheffield

Sheffield

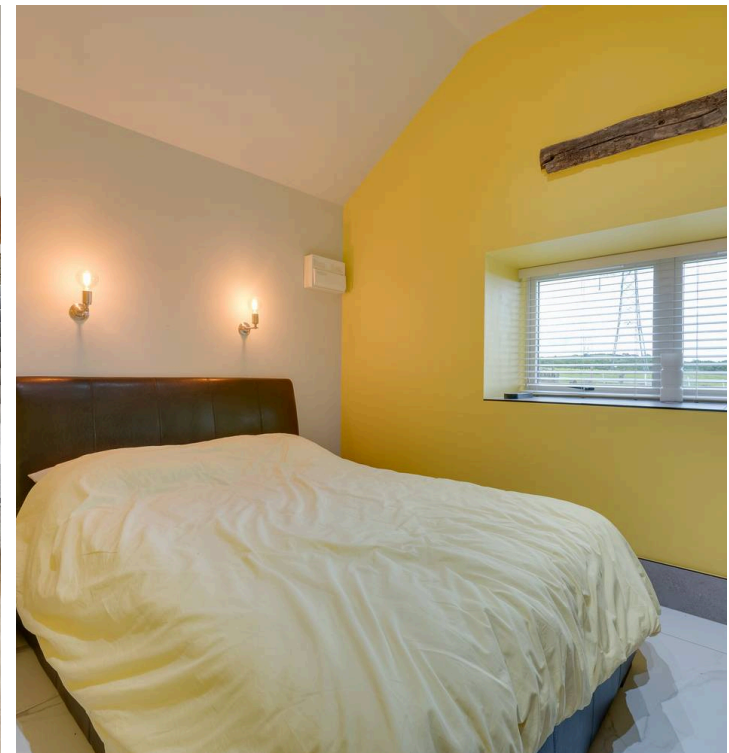
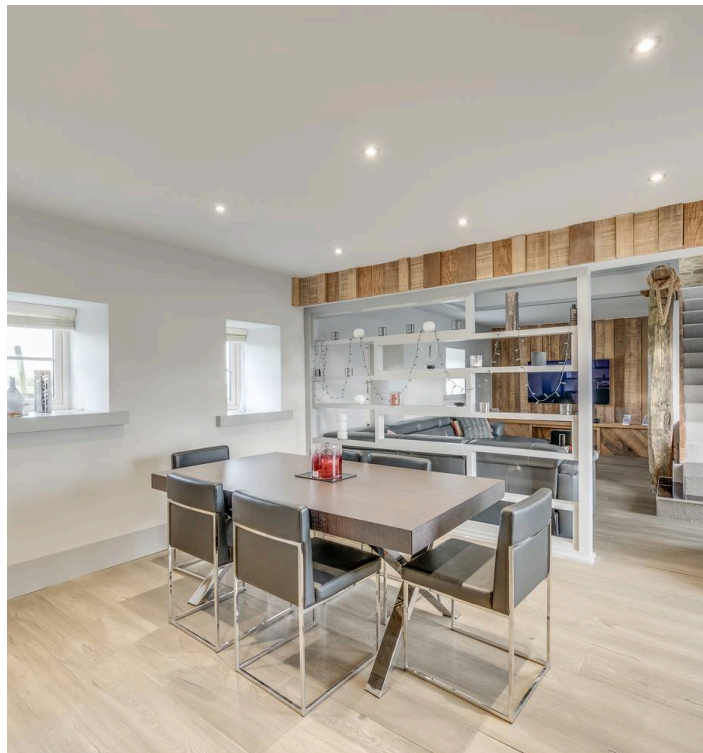
Guide Price **£1,000,000**



# Pear Tree Lodge, Carterhall Lane

## Sheffield

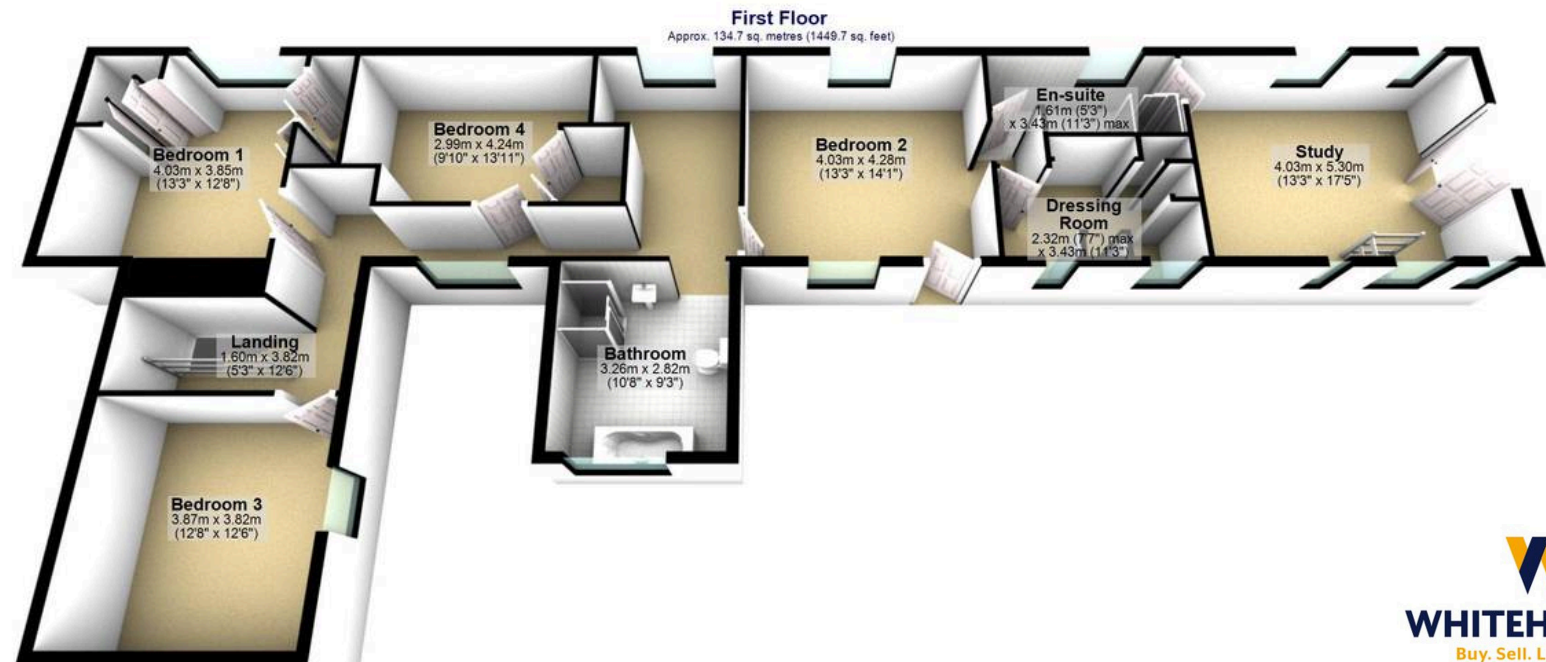
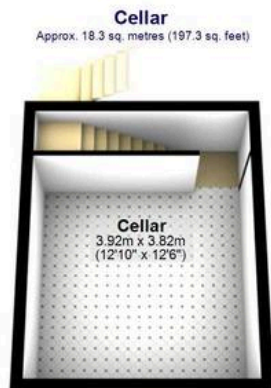
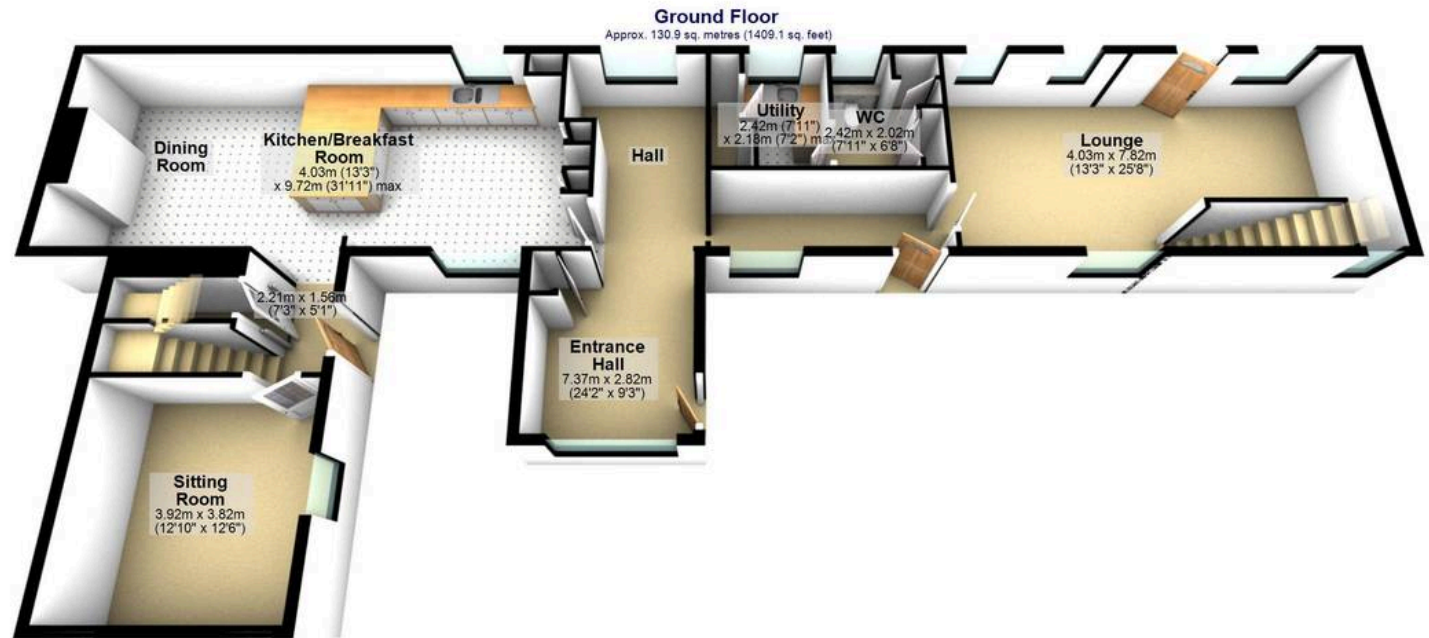
Nestled within an idyllic countryside setting, this stunning four-bedroom detached house presents a rare opportunity to own a beautifully preserved period lodge. Dating back to the 17th century and boasting an impressive 3500 square ft, this home exudes charm and character at every corner, with a wealth of original features lovingly retained throughout. As you step inside, you are greeted by a sense of warmth and sophistication, with the property being beautifully presented throughout. The open plan living spaces are ideal for modern family living, offering a seamless flow between the living, dining, and kitchen areas. The spacious layout allows for gatherings and entertaining, while also providing opportunities for quiet relaxation. The property boasts four generously sized bedrooms. The master suite is a true sanctuary, featuring an en-suite bathroom and ample storage space. The remaining bedrooms provide flexible accommodation options, perfect for growing families or those in need of a home office. Outside, the expansive private gardens offer a serene escape, with far-reaching views of picturesque countryside creating a tranquil backdrop. The detached garage and annex provide additional living space adding to the versatility of this exceptional property. Located in a sought-after location, this home offers the perfect balance of rural tranquility and modern convenience. The surrounding area is home to a range of amenities, including schools, shops, and restaurants, ensuring that everything you need is within easy reach. In summary, this unique property offers a rare opportunity to own a piece of history while enjoying all the comforts of modern living. With its charming











Total area: approx. 317.5 sq. metres (3418.0 sq. feet)

All measurements are approximate  
Plan produced using PlanUp.