



**WHITEHORNES**

Buy. Sell. Let. Relax!

0114 268 8533  
info@whitehorses.com  
www.whitehorses.com

**10 Swift Close, Bradwell**

Hope Valley

Offers in Region of **£340,000**



# 10 Swift Close

Bradwell, Hope Valley

Located in the heart of the Bradwell Springs development is this stunning stone-built, three bedroomed, semi detached, new build property. This beautifully presented property offers a versatile range of accommodation across two floors, briefly consisting of a fantastic open plan kitchen and living space well appointed cloakroom/WC, three bedrooms and two bathrooms. The kitchen features a range of contemporary units and a range of Hotpoint appliances throughout including oven, four burner gas hob and extractor, fridge freezer and dishwasher. The master bedroom features a beautiful ensuite bathroom with chrome heated towel rail, shower enclosure and wall mounted sink. Along with two other luxurious bedrooms and a modern family bathroom it's easy to say that viewing is essential to do full justice to this modern and spacious property. This property is perfect for first time buyers or growing families alike, not to forget this freehold property also has a 6-year LABC warranty remaining. To the outside, the front of the property boasts allocated off road parking for two vehicles and to the rear is a private, enclosed and south-facing garden creating the perfect outdoors space.

Council Tax band: C

Tenure: Freehold

- STUNNING THREE BEDROOMED END OF TERRACED FAMILY HOME
- EN-SUITE BATHROOM
- BEAUTIFUL RURAL LOCATION
- OFF ROAD PARKING
- PERFECT FAMILY HOME
- CLOSE TO LOCAL AMENITIES



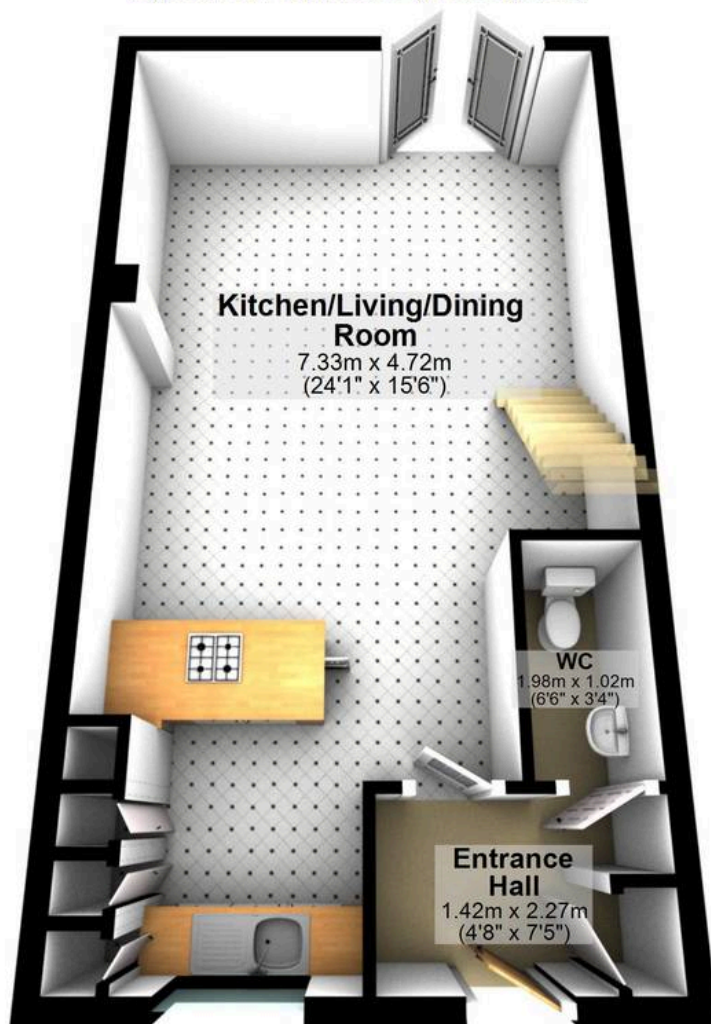






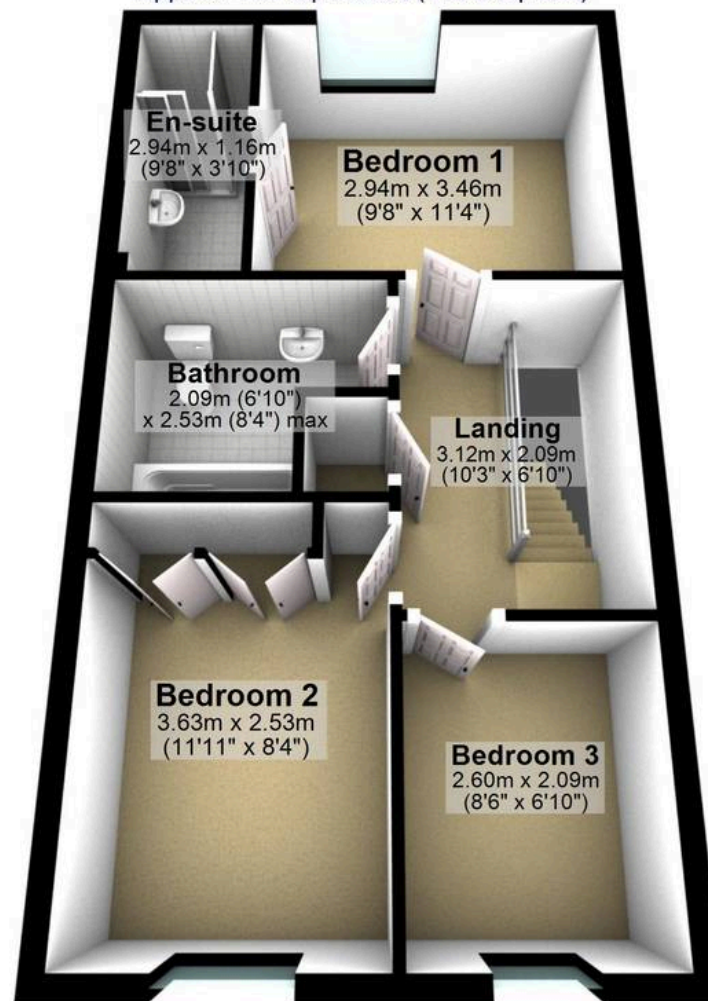
## Ground Floor

Approx. 41.7 sq. metres (449.3 sq. feet)



## First Floor

Approx. 41.7 sq. metres (449.3 sq. feet)



Total area: approx. 83.5 sq. metres (898.7 sq. feet)

All measurements are approximate  
Plan produced using PlanUp.



**WHITEHORSES**

Buy. Sell. Let. Relax!

0114 268 8533  
info@whitehorses.com  
www.whitehorses.com