



WHITEHORNES

Buy. Sell. Let. Relax!

0114 268 8533
info@whitehorses.com
www.whitehorses.com

106a Rushdale Road, Sheffield

Sheffield

Guide Price £150,000

106a Rushdale Road

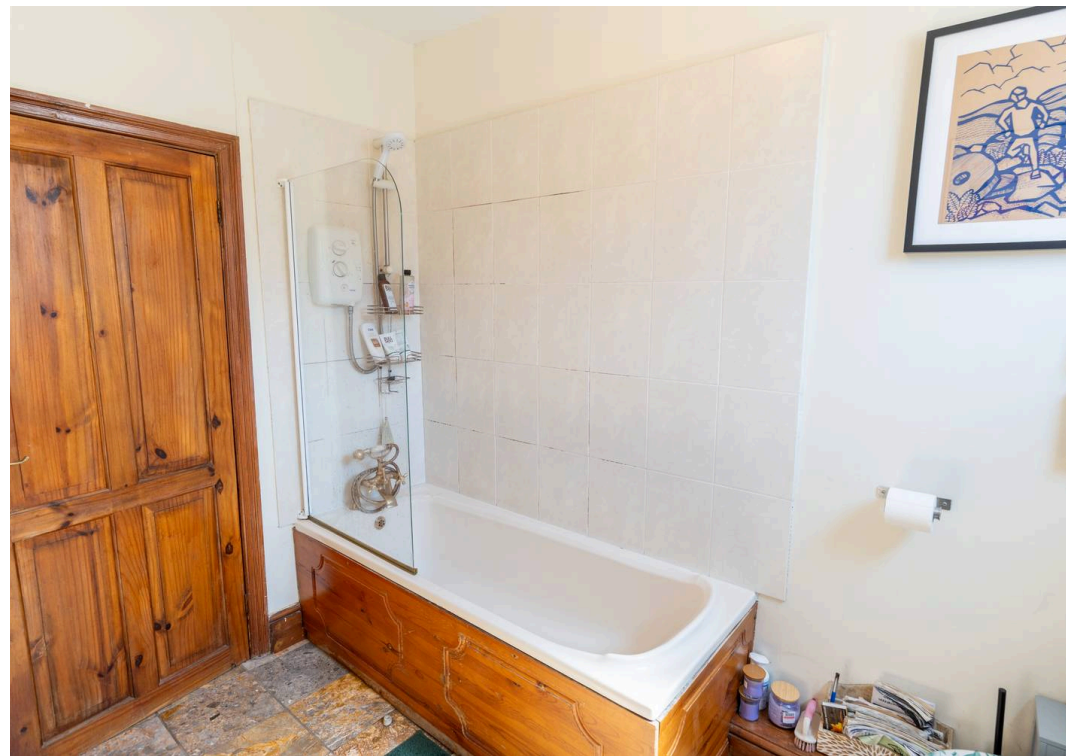
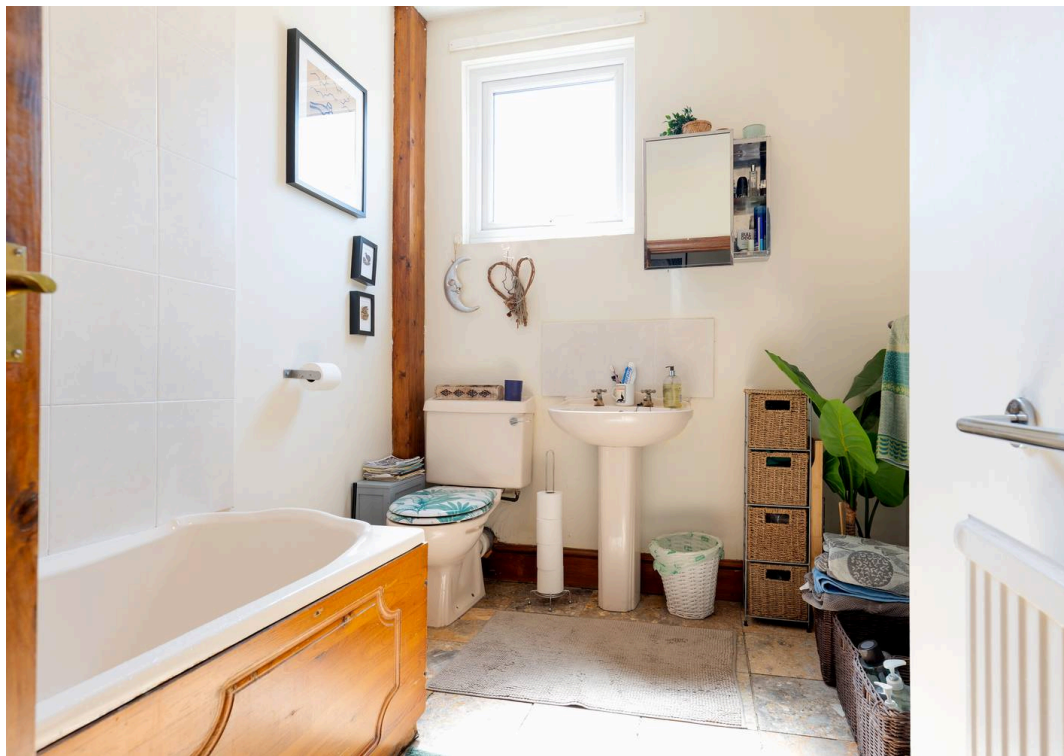
Sheffield, Sheffield

Council Tax band: A

Tenure: Leasehold

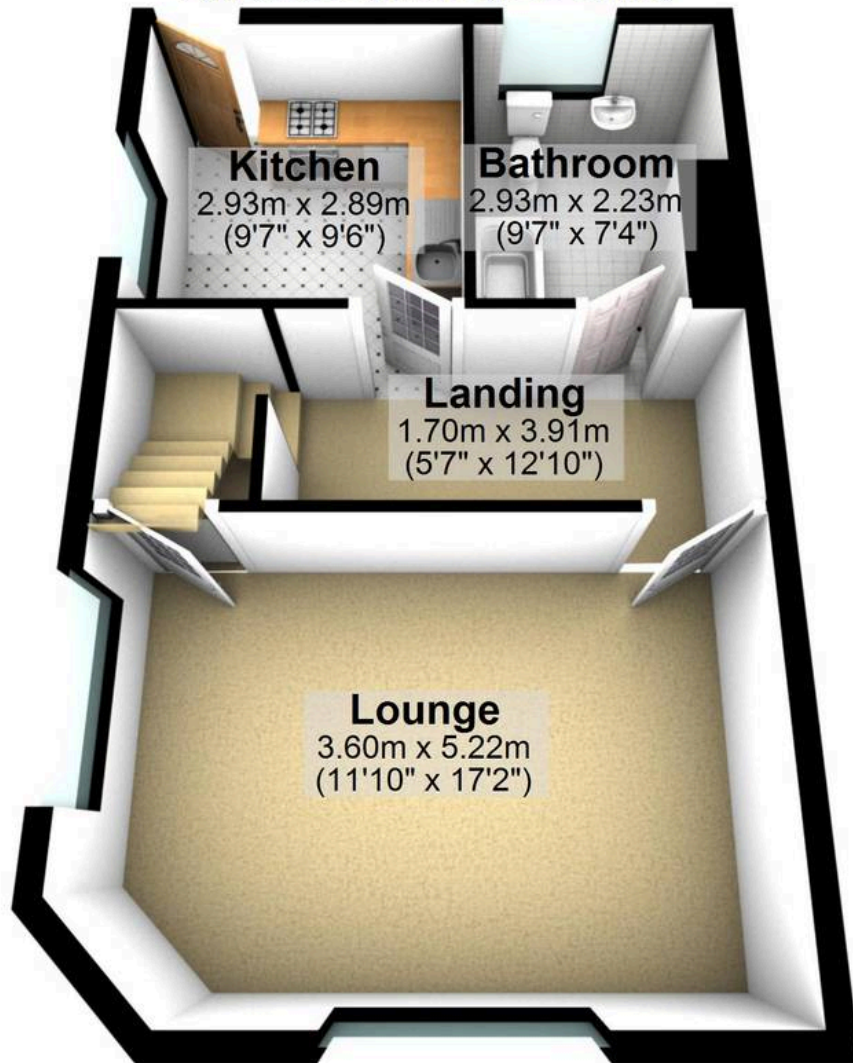
- ONE BEDROOMED APARTMENT
- VERY SPACIOUS
- PERFECT FOR FIRST TIME BUYERS
- CLOSE TO MEERSBROOK PARK
- ARRANGED OVER TWO LEVELS
- PRIVATE ACCESS
- AMPLE FREE ON STREET PARKING
- WEALTH OF LOCAL AMENITIES
- GREAT PUBLIC TRANSPORT LINKS
- EARLY VIEWING ADVISED





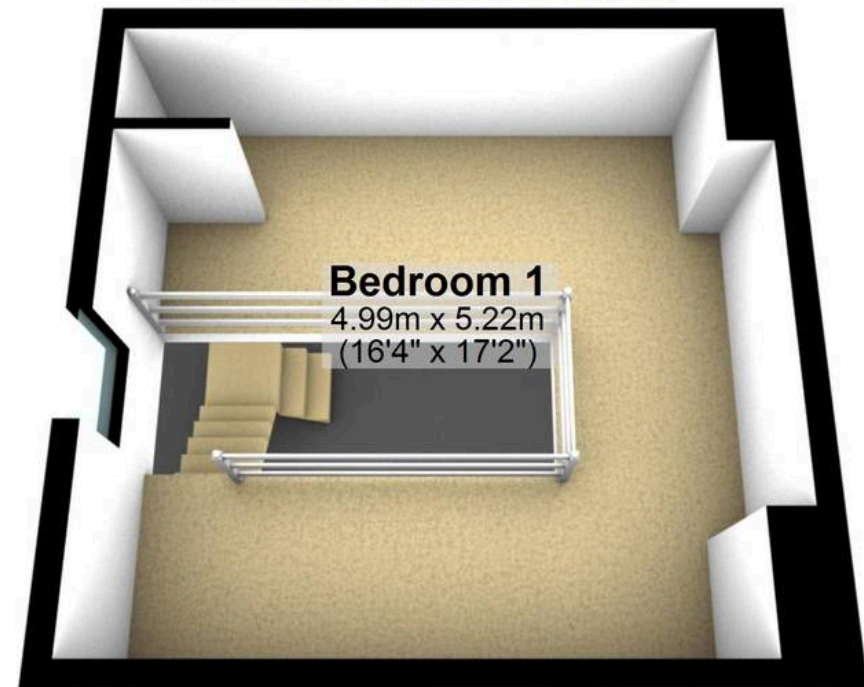
First Floor

Approx. 43.7 sq. metres (470.4 sq. feet)



Top Floor

Approx. 26.0 sq. metres (280.2 sq. feet)



Total area: approx. 69.7 sq. metres (750.5 sq. feet)

All measurements are approximate
Plan produced using PlanUp.